



1.0 mm Contact Spacing, NON-ZIF Type Board To FPC Connectors EFC12 SERIES

■ FEATURES

- 1.0mm contact spacing.
- No. of contacts: 3~32 pin.
- Connector Heights: 3.0mm(H-Type), 3.0mm(L-Type), 4.3mm(V-Type), 4.4mm(T-Type).
- NON-ZIF FPC / FFC Connector.

■ SPECIFICATIONS

1.ELECTRICAL

- Voltage rating: 50VAC
- Current rating: 1.0A
- Contact resistance:
30mΩ max. (initial)
- Insulation resistance:
1000MΩ min.

2.MECHANICAL

- Durability: Mate & Unmate with applicability for 30 times,
Contact resistance: 30mΩ max. (initial), 60mΩ max. (final)
- Cable insertion Force: 0.3kgf*n (2.94N*n) max. (n: Pin)
- Cable holding Force: 0.02kgf*n (0.196N*n) min. (n: Pin)
- Terminal Retention Force: 0.5kgf (4.9N) min.

■ MATERIALS

1.MATERIAL

- Contacts: Copper Alloy
- Insulator Housing:
High Temp. Thermoplastic

2.PLATING

- Contact:
- Nickel In All Area
 - Tin over Nickel (RoHS Compliant)
- Hold Down:
- Nickel In All Area
 - Tin over Nickel (RoHS Compliant)

■ PACKING

1.Packing method

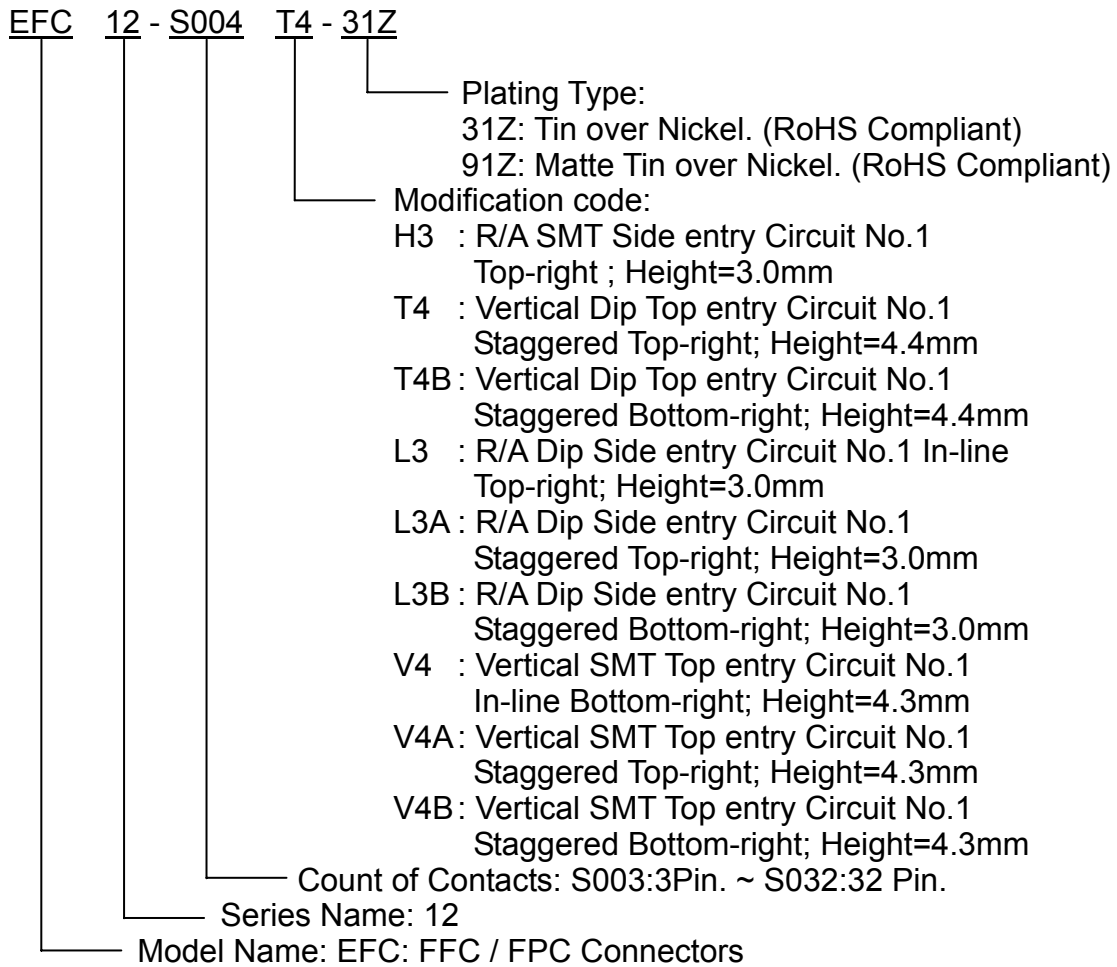
- All connector are packed in tube or reel method.

2.Information on label (stuck to each ploy bag, reel and box)

- | | | | |
|--------------|------------------|--------------|--------------|
| (1)Part NO. | (2)Section. | (3)Lot NO. | (4)Quantity. |
| (5)QC stamp. | (6)Reprocess NO. | (7)ECE mark. | |



■ PART NUMBERING SYSTEM



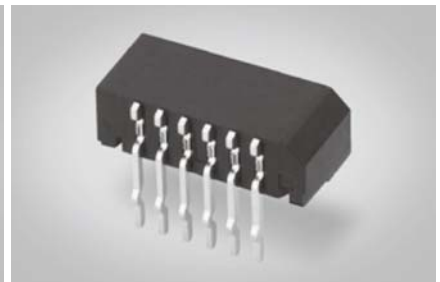
EFC12-S*T4**



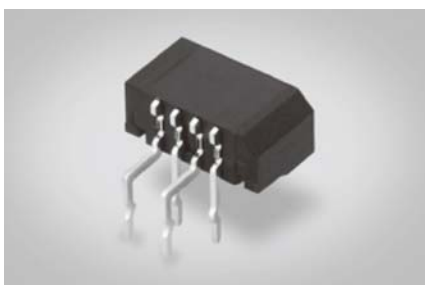
EFC12-S*T4B**



EFC12-S*L3**



EFC12-S*L3A**



EFC12-S*L3B**



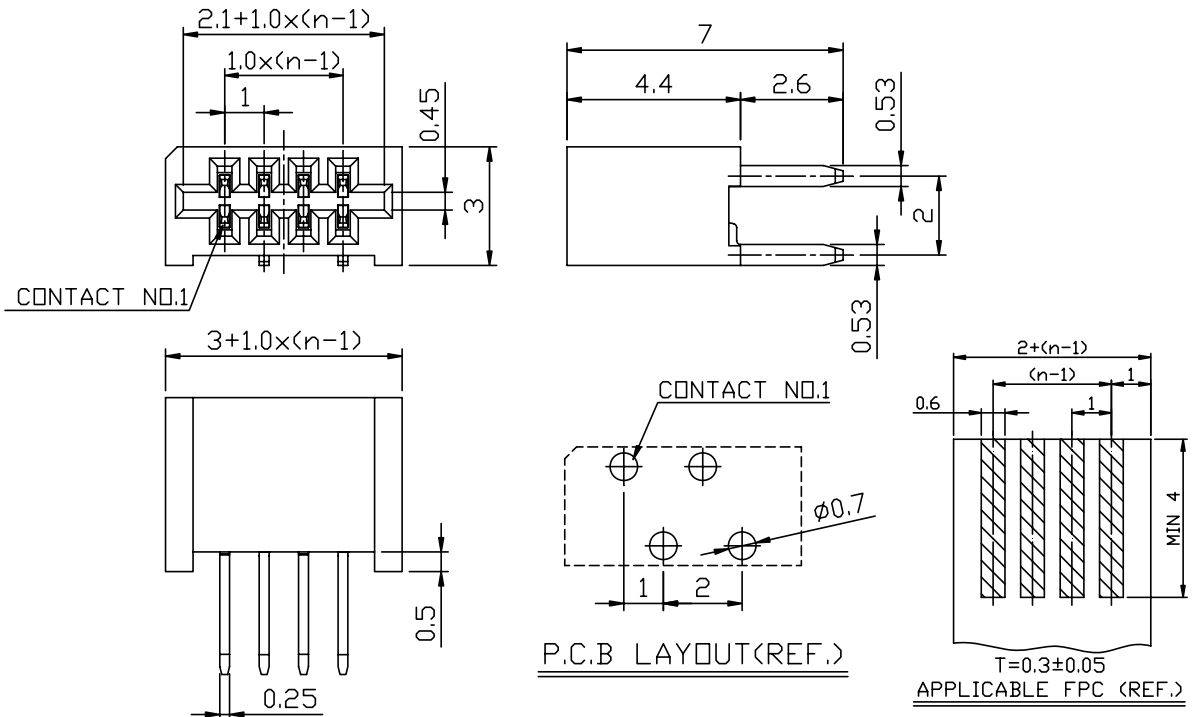
EFC12-S*H3**





EFC12-S***T4B-***Z(RoHS Compliance) UNIT:mm

Connection Style: Straight Type



EFC12-SxxxL3 UNIT:mm Non ZIF FPC/FFC

Connection Style:R/A DIP Side entry No.1,Top-Right

