

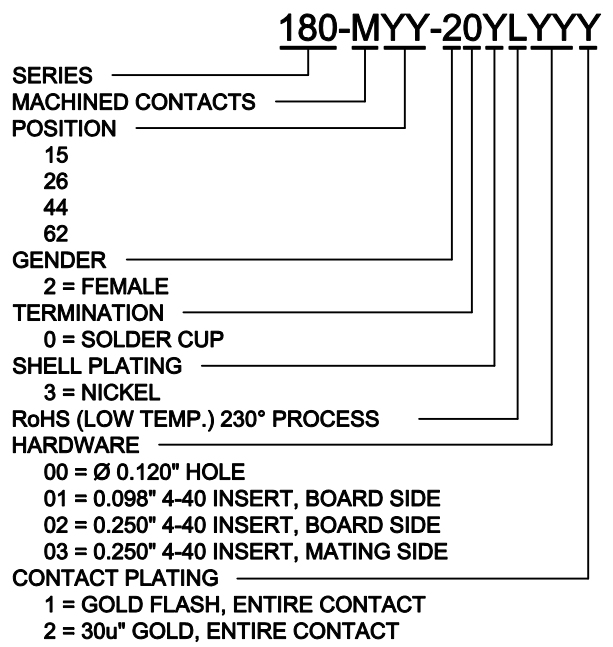
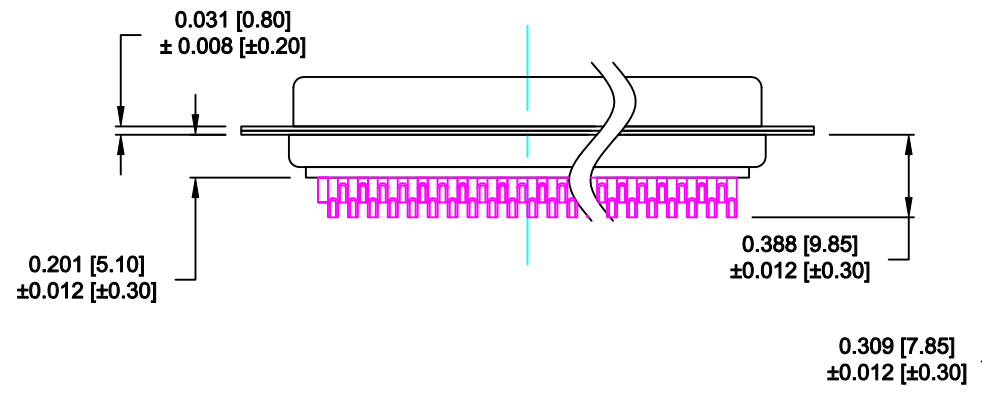
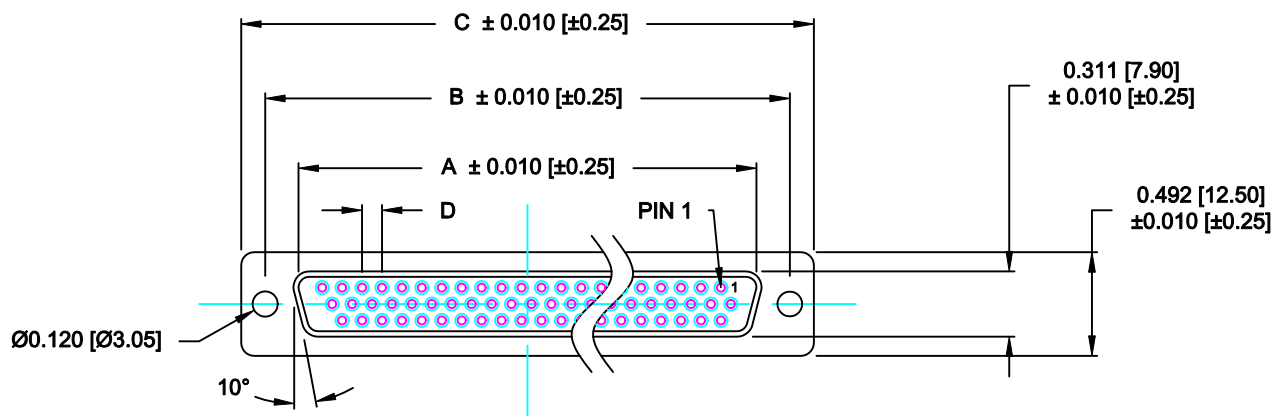
DESCRIPTION: HIGH DENSITY - MACHINED CONTACTS - SOLDER CUP

MATERIALS AND FINISH:

SHELL: STEEL MATERIAL, NICKEL FINISH
 INSULATOR: PBT THERMOPLASTIC 30% GLASS FILLED, UL 94V-0 RATED, BLACK COLOR
 CONTACT MATERIAL: COPPER ALLOY
 CONTACT FINISH: SELECTIVE GOLD FINISHED

ELECTRICAL:

CONTACT CURRENT RATING: 3 AMPS
 CONTACT RESISTANCE: 10 Milliohms Max.
 DIELECTRIC WITHSTANDING VOLTAGE: 1,000VAC Min.
 INSULATION RESISTANCE: 5 GOHMS Min.
 TEMPERATURE RATING: -55° ~ +125° C



| DIMENSIONS (IN.) | | | | |
|------------------|-------|-------|-------|-------|
| No. OF PINS | A | B | C | D |
| 15 | 0.642 | 0.984 | 1.213 | 0.090 |
| | 16.30 | 25.00 | 30.80 | 2.29 |
| 26 | 0.969 | 1.311 | 1.543 | 0.090 |
| | 24.60 | 33.30 | 39.20 | 2.29 |
| 44 | 1.512 | 1.852 | 2.089 | 0.090 |
| | 38.40 | 47.05 | 53.05 | 2.29 |
| 62 | 2.159 | 2.500 | 2.729 | 0.094 |
| | 54.83 | 63.50 | 69.32 | 2.39 |

ACCEPTS 28 - 24 AWG WIRE

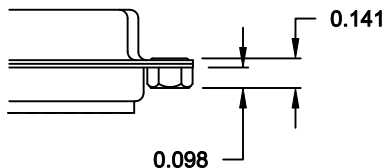
DO NOT SCALE FROM DRAWING

| | | | | |
|----------------|---|-------------------|---------------------------|--------------------------|
| | THESE DRAWINGS AND SPECIFICATIONS ARE THE PROPERTY OF NorComp AND SHALL NOT BE REPRODUCED, COPIED OR USED AS THE BASIS FOR THE MANUFACTURE OF SALE OF APPARATUS WITHOUT WRITTEN PERMISSION. | | DRAWN: C. SMITH | DATE: 03-13-07 |
| | | | CHECKED: | DATE: |
| NorComp | SCALE: 1 : 1 | SHEET 1 | OF 2 | REV 7 |
| | DWG NO. 180-MYY-20YLYYY | | | |

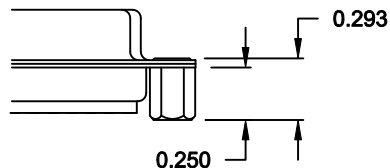
RoHS COMPLIANT

ALL CLINCH-NUTS ARE 4-40 INTERNAL THREADS

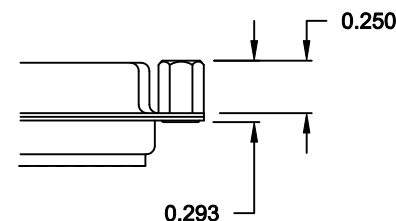
01X 0.098" (BOARD SIDE) - CN1




02X 0.250" (BOARD SIDE) - CN2



03X..... 0.250" (MATING SIDE) - CN8



DO NOT SCALE FROM DRAWING

| | | | | | |
|--|---|--|-------------------------|-------------------|-------|
|  | THESE DRAWINGS AND SPECIFICATIONS ARE THE PROPERTY OF NorComp AND SHALL NOT BE REPRODUCED, COPIED OR USED AS THE BASIS FOR THE MANUFACTURE OF SALE OF APPARATUS WITHOUT WRITTEN PERMISSION. | | DRAWN: C. SMITH | DATE: 02-12-08 | |
| | | | CHECKED: | DATE: | |
| <h1>NorComp</h1> | | | SCALE: | SHEET 2 OF 2 | REV 7 |
| | | | DWG NO. 180-MYY-20YLYYY | | |

RoHS COMPLIANT