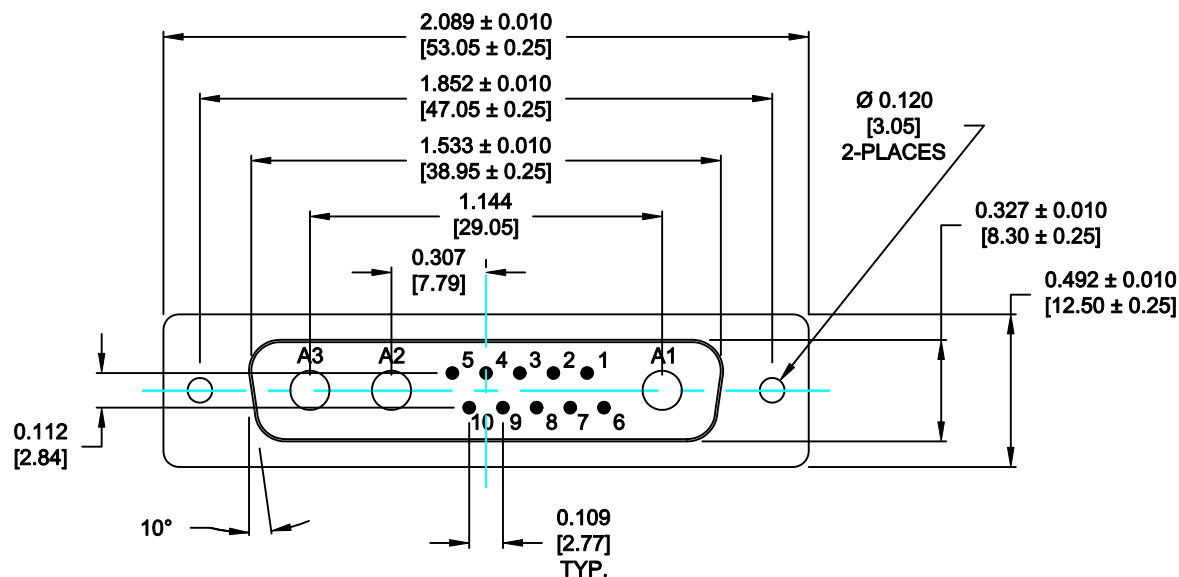


DESCRIPTION: **POWER / SIGNAL - VERTICAL BOARD - MALE - MACHINED****SPECIFICATIONS:****ELECTRICAL:**

INSULATOR RESISTANCE:	5 G OHMS Min.
DIELECTRIC WITHSTANDING:	1,000VAC r.m.s.
OPERATING TEMPERATURE:	-55° C ~ +155° C
POWER CONTACT RESISTANCE:	1.0 Milliohms Max.
SIGNAL CONTACT RESISTANCE:	2.7 Milliohms Max.
POWER PINS:	40 AMPS
SIGNAL PINS:	5 AMPS

**MECHANICAL:**

CONTACT INSERTION FORCE:	4.5 Kg Max.
CONTACT SEPARATOR FORCE:	0.3Kg Min.

**MATERIALS:**

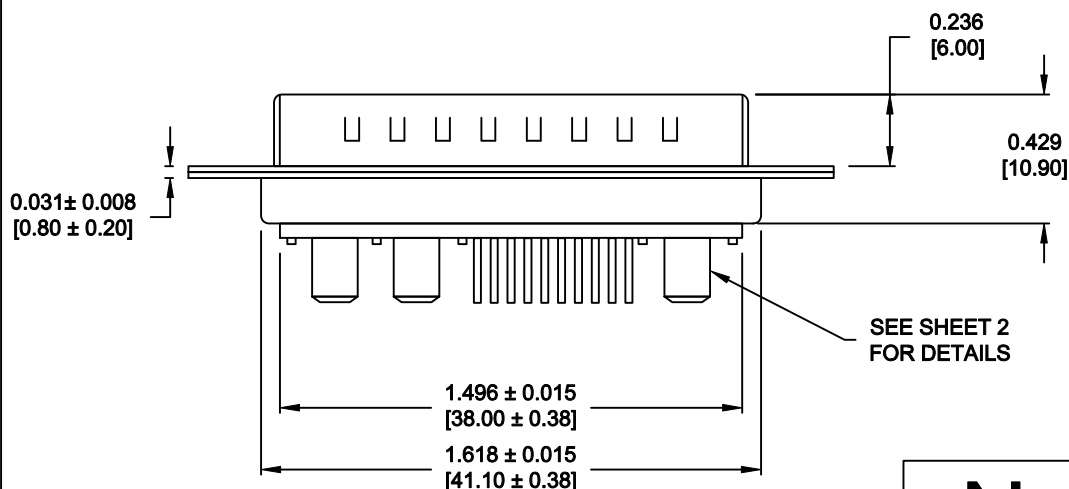
CONTACTS:	COPPER ALLOY
INSULATOR:	PBT UL94V-0 RATED, BLK
	230°C PROCESS TEMP.
SHELL:	STEEL
SEAL:	F08 FLEXIBLE ADHESIVE

**FINISH:**

SHELL:	NICKEL
CONTACTS:	FULL GOLD FLASH

**681S13W3103L001**

00 = 40 AMPS

**MEETS IP67 STANDARDS**

(SEE PAGE 2 FOR SEALING DETAILS)

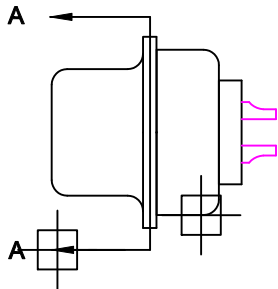
**RoHS COMPLIANT**

THESE DRAWINGS AND SPECIFICATIONS ARE THE PROPERTY OF NorComp AND SHALL NOT BE REPRODUCED, COPIED OR USED AS THE BASIS FOR THE MANUFACTURE OF SALE OF APPARATUS WITHOUT WRITTEN PERMISSION.

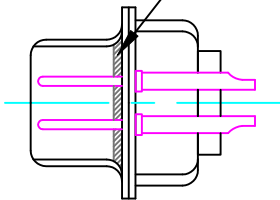
**NorComp**

DRAWN:	<b>P.JENKINS</b>	DATE:	<b>09-13-11</b>
CHECKED:		DATE:	
SCALE:	<b>N.T.S.</b>	SHEET	OF
		<b>1</b>	<b>3</b>
DWG NO.	<b>681S13W3103L001</b>		
		REV	<b>0</b>

DESCRIPTION: 681 SERIES CONTACTS

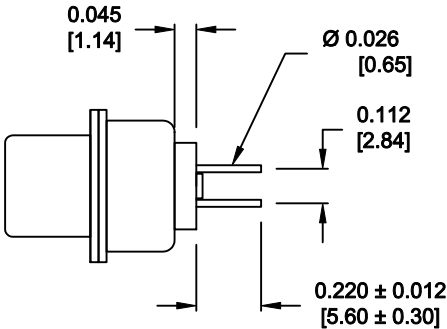


FRONT SEAL APPLIED OVER INSULATOR  
AND BETWEEN FRONT & REAR SHELLS

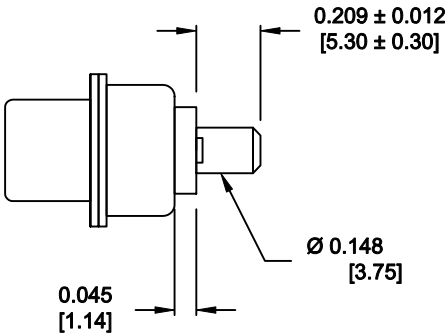


DETAIL A-A  
SHOWN FOR REFERENCE ONLY

NOTE: SIGNAL AND POWER CONTACTS  
COME PRE-LOADED INTO INSULATORS



SIGNAL CONTACTS



POWER CONTACTS

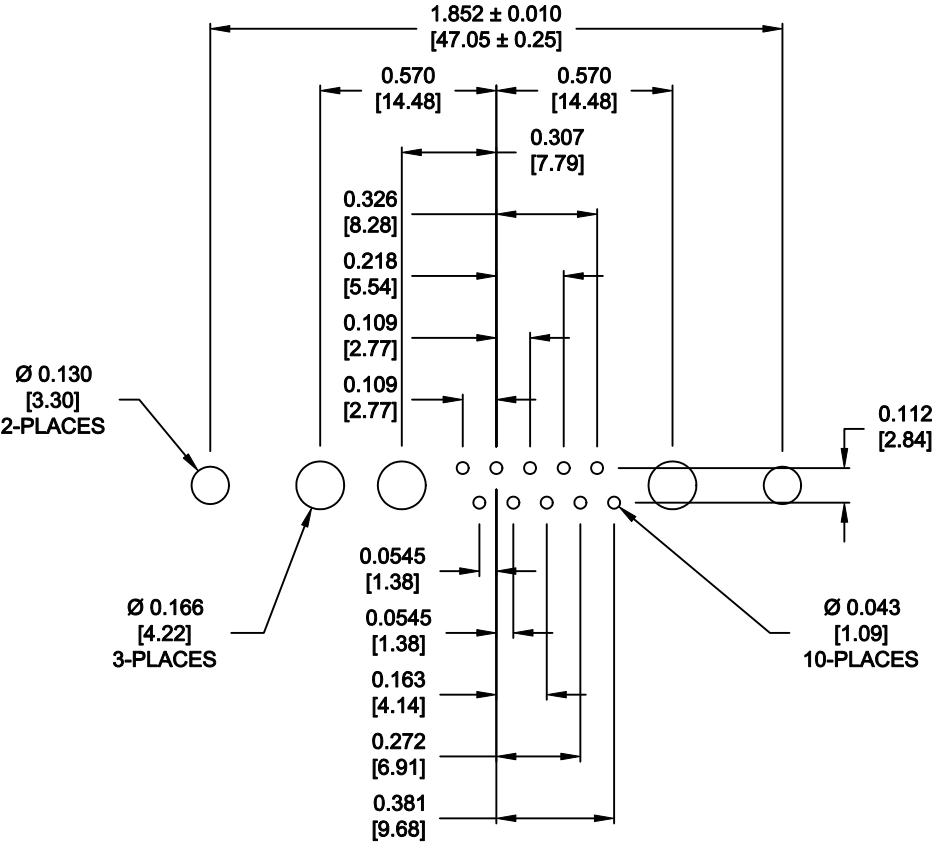
RoHS COMPLIANT




THESE DRAWINGS AND SPECIFICATIONS  
ARE THE PROPERTY OF NorComp AND  
SHALL NOT BE REPRODUCED, COPIED  
OR USED AS THE BASIS FOR THE  
MANUFACTURE OF SALE OF APPARATUS  
WITHOUT WRITTEN PERMISSION.

DRAWN: P. JENKINS		DATE: 09-13-11	
CHECKED:		DATE:	
SCALE: N.T.S.	SHEET 2	OF 3	REV 0
DWG NO. 681S13W3103L001			

NorComp



RECOMMENDED PCB LAYOUT  
TOLERANCE ± 0.002 [ 0.050]

	THESE DRAWINGS AND SPECIFICATIONS ARE THE PROPERTY OF NorComp AND SHALL NOT BE REPRODUCED, COPIED OR USED AS THE BASIS FOR THE MANUFACTURE OF SALE OF APPARATUS WITHOUT WRITTEN PERMISSION.	DRAWN: <b>P. JENKINS</b>		DATE: <b>09-13-11</b>	
		CHECKED:		DATE:	
<b>NorComp</b>		SCALE: <b>N.T.S.</b>	SHEET <b>3</b> OF <b>3</b>		REV <b>0</b>
		DWG NO. <b>681S13W3103L001</b>			