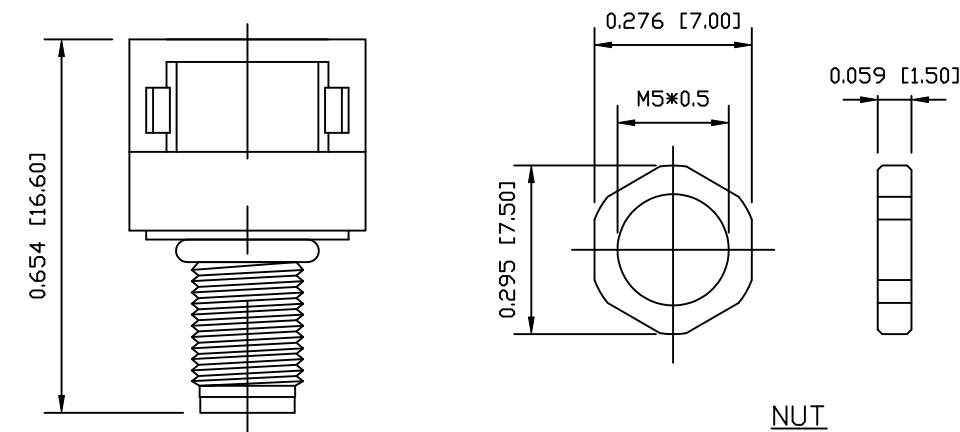
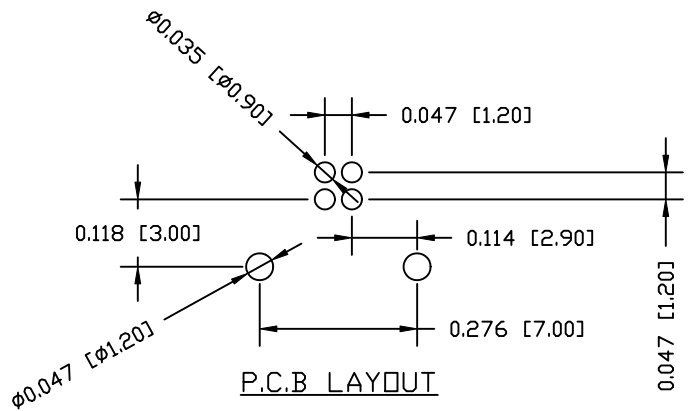


DESCRIPTION: M5 MALE - RIGHT ANGLE - PANEL MOUNT - 2 POSITION

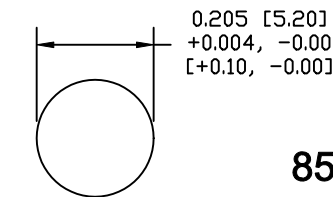
UNITS = INCHES [MM]



NUT



P.C.B. LAYOUT



PANEL CUT-OUT

853-002-113R00Y

1 = GOLD FLASH
4 = 10u" GOLD

NOTE:

MATERIAL

HOUSING:
CONTACT:
NUT:
O-RING:
BACK HOUSING
DOWN HOUSING

PBT UL94V-0, BLACK
BRASS
BRASS
NBR, BLACK
PBT UL94V-0, BLACK
PBT UL94V-0, BLACK

FINISH

CONTACT:
NUT:

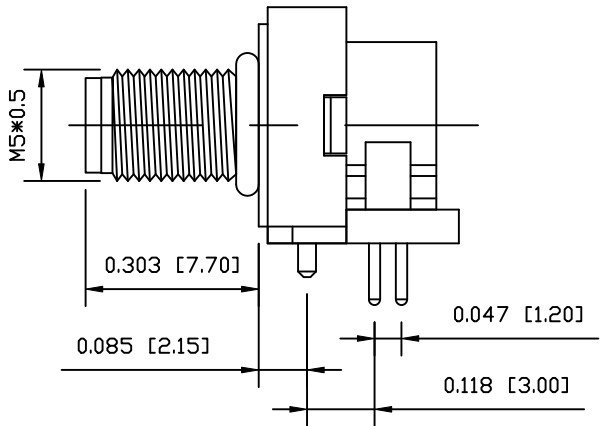
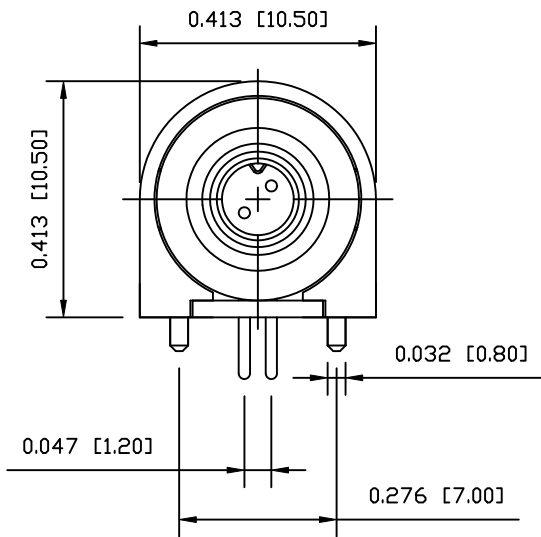
GOLD PLATED
OVER 50u" NICKEL
NICKEL PLATED

ELECTRICAL

RATED CURRENT: 1A
RATED VOLTAGE: 60V
WATER PROOF: IP67

ENVIRONMENT

OPERATION TEMPERATURE: -40°C TO +85°C



RoHS COMPLIANT

DO NOT SCALE FROM DRAWING



THESE DRAWINGS AND SPECIFICATIONS ARE THE PROPERTY OF NorComp AND SHALL NOT BE REPRODUCED, COPIED OR USED AS THE BASIS FOR THE MANUFACTURE OR SALE OF APPARATUS WITHOUT WRITTEN PERMISSION.

DRAWN:
M. SIGMON

DATE:
03-03-16

CHECKED:

DATE:

NorComp

SCALE:
NTS

SHEET 1 OF 1

REV 1

DWG NO.

853-002-113R00Y