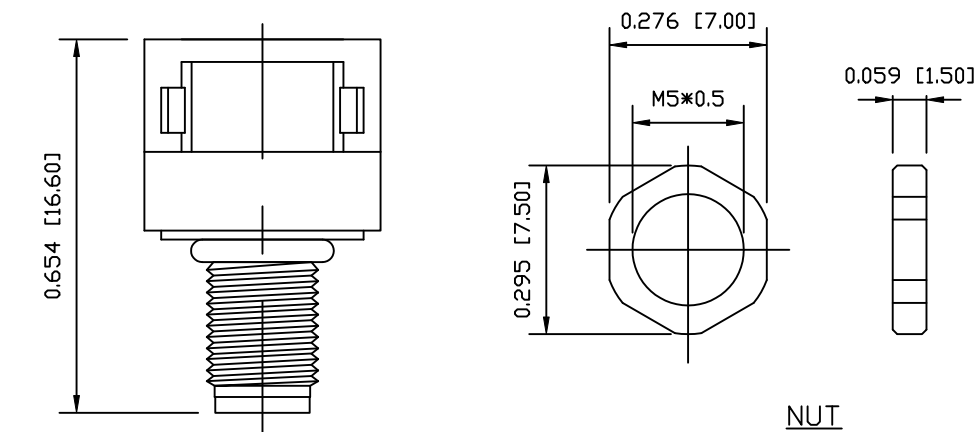
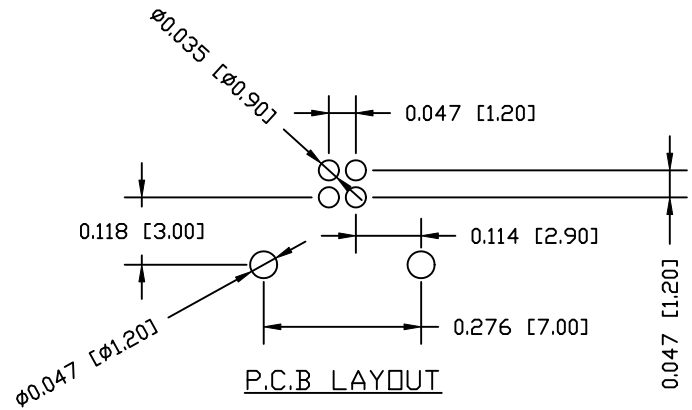


DESCRIPTION: M5 MALE - RIGHT ANGLE - PANEL MOUNT - 3 POSITION

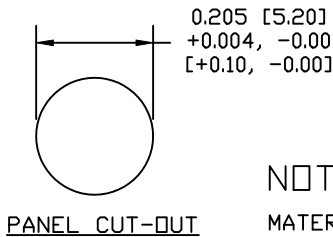
UNITS = INCHES [MM]



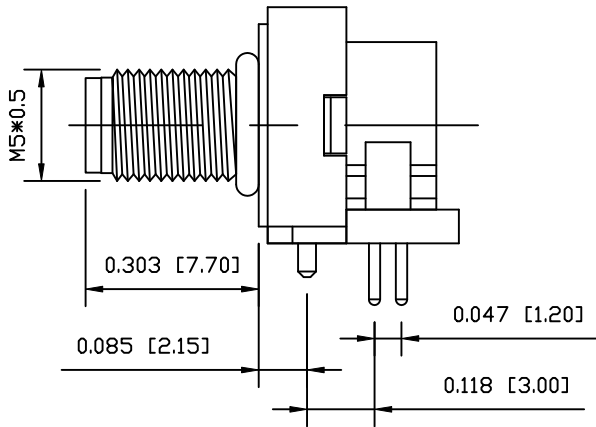
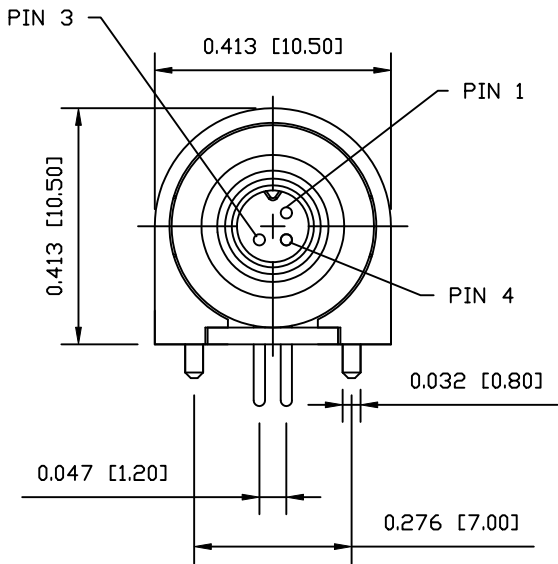
NUT



P.C.B. LAYOUT



PANEL CUT-OUT



NOTE:

MATERIAL

HOUSING:  
CONTACT:  
NUT:  
O-RING:  
BACK HOUSING  
DOWN HOUSING

PBT UL94V-0, BLACK  
BRASS  
BRASS  
NBR, BLACK  
PBT UL94V-0, BLACK  
PBT UL94V-0, BLACK

FINISH

CONTACT:  
NUT:

GOLD PLATED  
OVER 50µ" NICKEL  
NICKEL PLATED

ELECTRICAL

RATED CURRENT: 1A  
RATED VOLTAGE: 60V  
WATER PROOF: IP67  
ENVIRONMENT  
OPERATION TEMPERATURE: -40°C TO +85°C

853-003-113R00Y

1 = GOLD FLASH  
4 = 10µ" GOLD

RoHS COMPLIANT

DO NOT SCALE FROM DRAWING



THESE DRAWINGS AND SPECIFICATIONS ARE THE PROPERTY OF NorComp AND SHALL NOT BE REPRODUCED, COPIED OR USED AS THE BASIS FOR THE MANUFACTURE OR SALE OF APPARATUS WITHOUT WRITTEN PERMISSION.

DRAWN:  
M. SIGMON  
CHECKED:

DATE:  
03-04-16  
DATE:

NorComp

SCALE:  
NTS

SHEET 1 OF 1

REV 0

DWG NO.

853-003-113R00Y