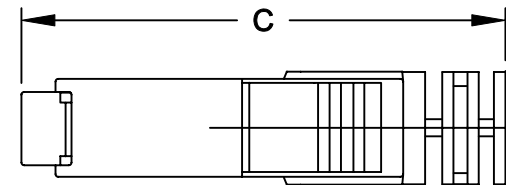
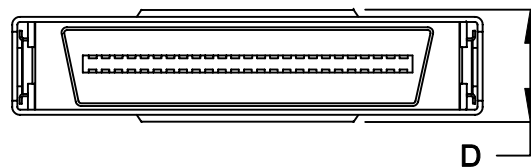
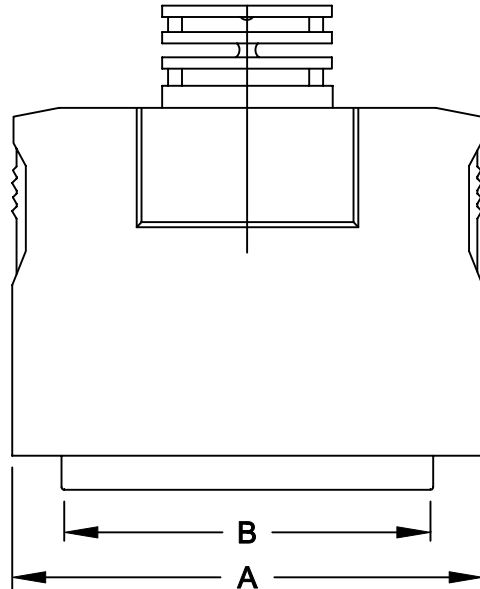


DESCRIPTION: .050 Ribbon Plastic Backshell w/Spring Latches

	A	B	C	D
50	1.917	1.404	1.732	.504
	48.70	35.66	43.99	12.80



**Kit Includes:**

- (1) Male Solder Cup Connector
- (2) Metal Shell Halves
- (2) Spring Latches
- (1) Plastic Housing Cover - Beige

**Materials:**

**Connector:**

Insulator: High Temp plastic

U.L. rated 94V-0

Contacts: Copper Alloy

Shell: Steel

Backshell: Glass-Filled Thermoplastic. U.L. rated 94V-0

RoHS COMPLIANT

**Electricals:**


Contact current rating: 1.0 Amp

Dielectric Withstanding Voltage: AC 500 V r.m.s.

Insulation Resistance: 500 MEGOHMS Min.

Contact Resistance: 25 MILLIOHMS Max.

Operating Temperature: -55°C to + 105°C

	THESE DRAWINGS AND SPECIFICATIONS ARE THE PROPERTY OF NorComp AND SHALL NOT BE REPRODUCED, COPIED OR USED AS THE BASIS FOR THE MANUFACTURE OF SALE OF APPARATUS WITHOUT WRITTEN PERMISSION.		DRAWN: <b>WAYNE ROBBINS</b>	DATE: <b>9-21-05</b>
			CHECKED:	DATE:
NorComp		SCALE: 1:2	SHEET 1 OF 1	REV 1
		DWG NO. 990-XXX-010L091		