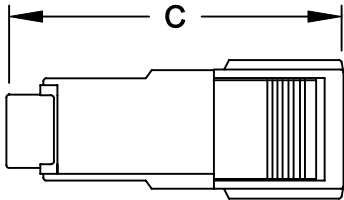
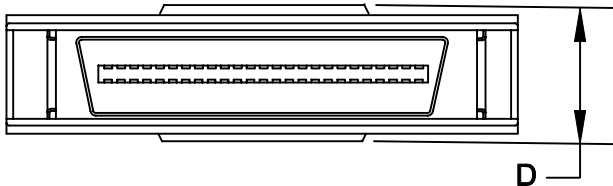
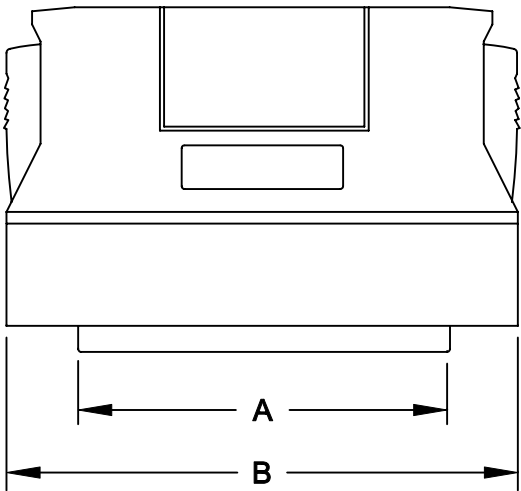


DESCRIPTION: .050 Ribbon Die Cast Backshell w/Spring Latches

	A	B	C	D
50	1.917	1.404	1.339	.571
	48.70	35.65	34.00	14.50



- Kit Includes:
- (1) Male Solder Cup Connector
 - (2) Spring Latches
 - (1) Strain Relief Clip
 - (2) Strain Relief Screws
 - (2) Metal Housings Halves
 - (2) Housing Screws

Materials:

Connector:

Insulator: High Temp plastic
U.L. rated 94V-0

Contacts: Copper Alloy


Shell: Steel with nickel plating

Backshell: Zinc Alloy

RoHS COMPLIANT

Electricals:

Contact current rating: 1.0 Amp
Dielectric Withstanding Voltage: AC 500 V r.m.s.
Insulation Resistance: 500 MEGOHMS Min.
Contact Resistance: 25 MILLIOHMS Max.
Operating Temperature: -55°C to + 105°C



THESE DRAWINGS AND SPECIFICATIONS ARE THE PROPERTY OF NorComp AND SHALL NOT BE REPRODUCED, COPIED OR USED AS THE BASIS FOR THE MANUFACTURE OF SALE OF APPARATUS WITHOUT WRITTEN PERMISSION.

DRAWN:
WAYNE ROBBINS

CHECKED:

DATE:
9-24-05

DATE:

NorComp

SCALE:
1:2

SHEET
1 OF
1

REV
1

DWG NO.
990-XXX-030L121