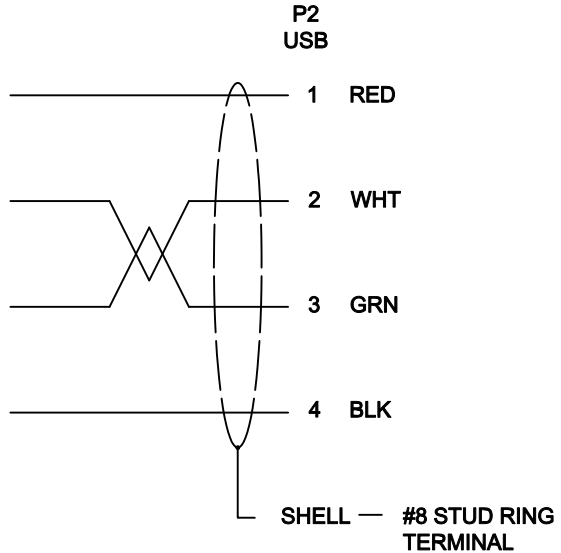
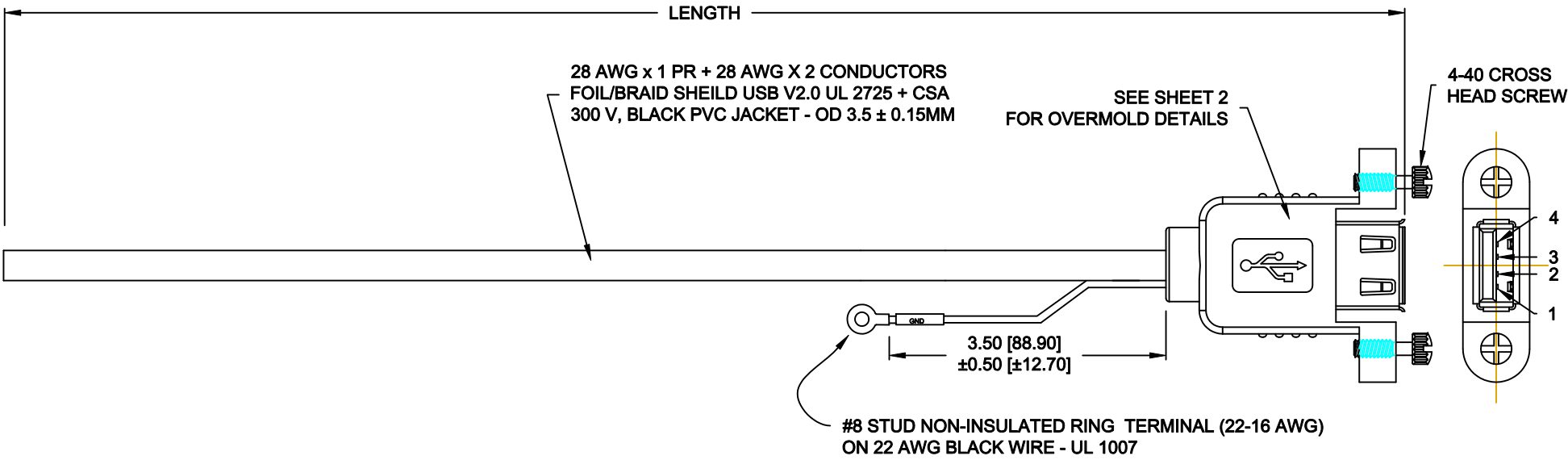


DESCRIPTION: TYPE "A" FEMALE PANEL MOUNT - GROUND LEAD - BLUNT CUT



CONNECTOR PINOUT

CCA-000-Y YY R145

DIMENSION I = INCHES  
 F = FEET  
 M = METERS

LENGTH (10" or 24")

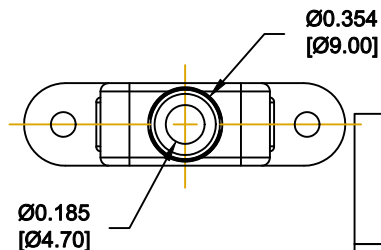
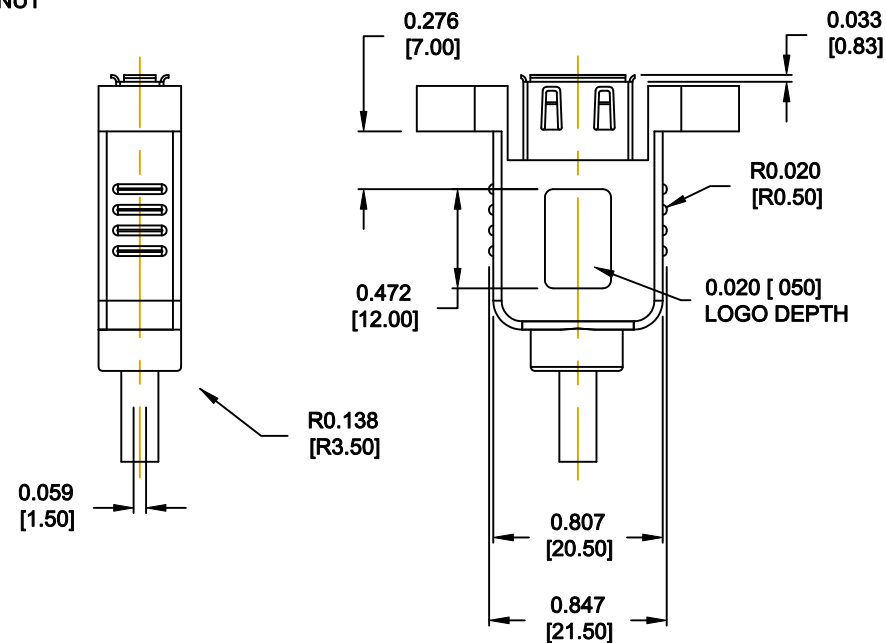
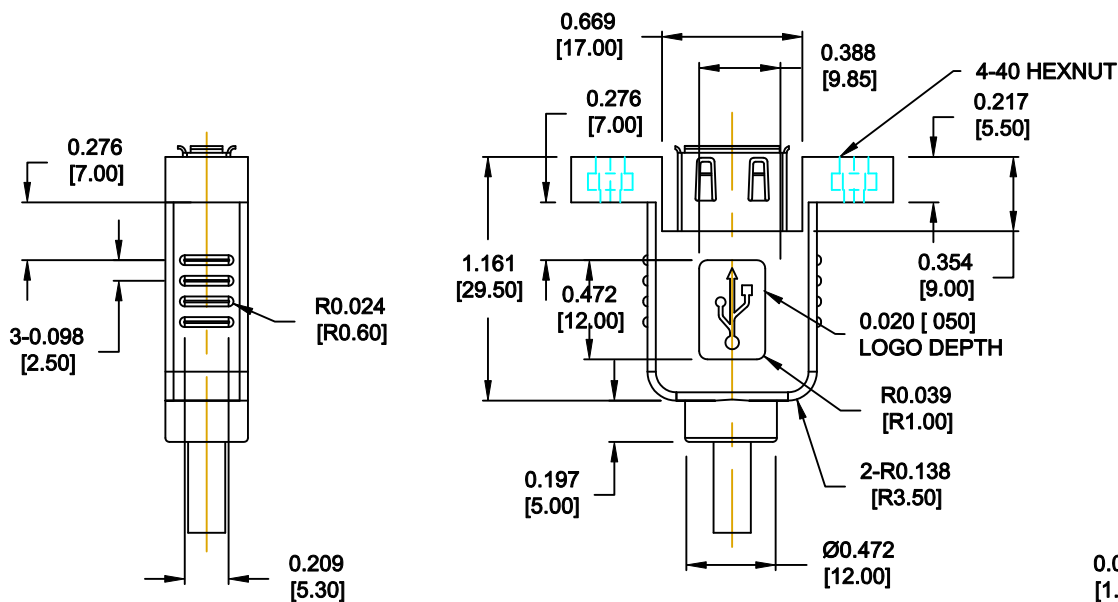
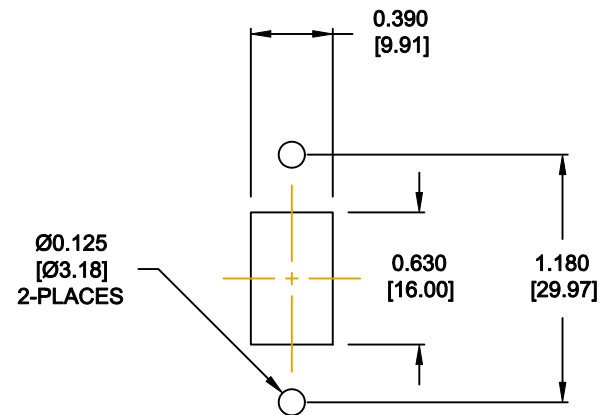
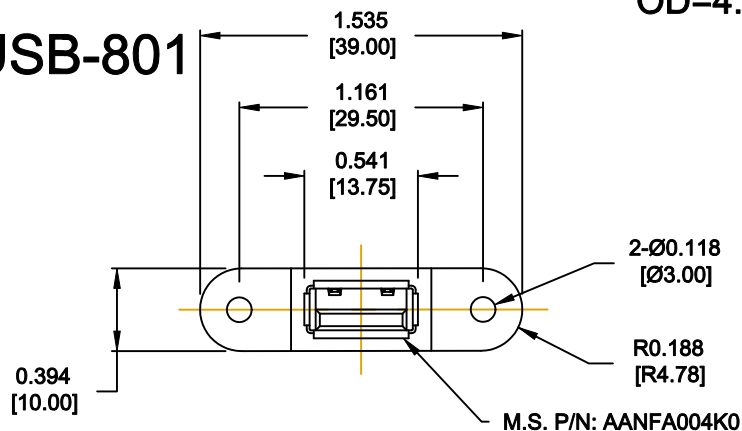
ALL MATERIALS AND ASSEMBLY METHODS  
 USED IN THE MANUFACTURE OF THIS CABLE IS  
**RoHS COMPLIANT**

	THESE DRAWINGS AND SPECIFICATIONS ARE THE PROPERTY OF NorComp AND SHALL NOT BE REPRODUCED, COPIED OR USED AS THE BASIS FOR THE MANUFACTURE OF SALE OF APPARATUS WITHOUT WRITTEN PERMISSION.		DRAWN: <b>M. SIGMON</b>	DATE: <b>11-05-10</b>
			CHECKED:	DATE:
<h1>NorComp</h1>		SCALE: <b>1 : 1</b>	SHEET <b>1</b> OF <b>2</b>	REV <b>3</b>
		DWG NO. <b>CCA-000-YYR145</b>		

# MOLD # LM2-USB-801

OD=4.7mm

## RECOMMENDED PANEL CUTOUT



THESE DRAWINGS AND SPECIFICATIONS ARE THE PROPERTY OF NorComp AND SHALL NOT BE REPRODUCED, COPIED OR USED AS THE BASIS FOR THE MANUFACTURE OF SALE OF APPARATUS WITHOUT WRITTEN PERMISSION.

# NorComp

DRAWN: <b>M. SIGMON</b>		DATE: 11-05-10	
CHECKED:		DATE:	
SCALE: 1:1	SHEET 2	OF 2	REV 3
DWG NO. CCA-000-YYR145			