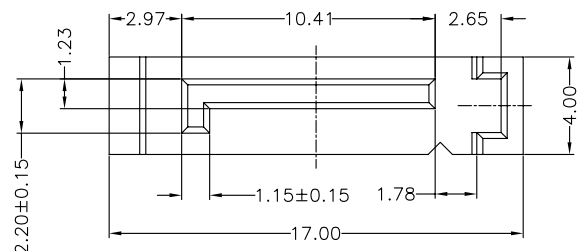
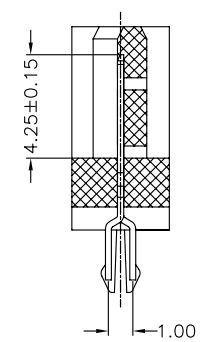
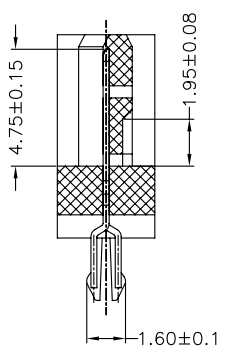
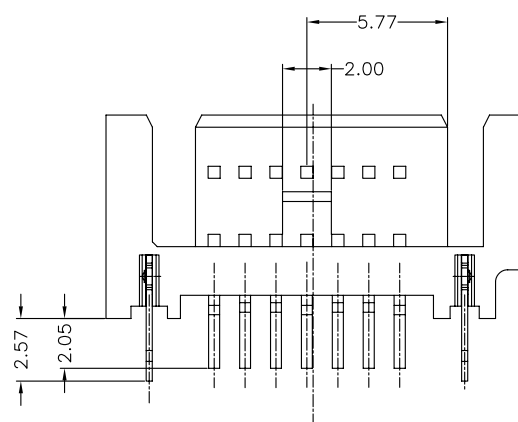
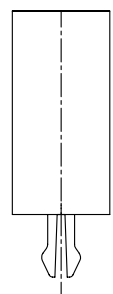
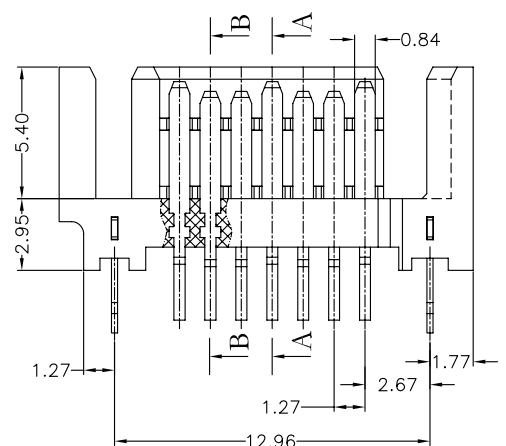


|      |               |         |       |
|------|---------------|---------|-------|
| REV. | SPECIFICATION | ECN NO. | APPD. |
|      |               |         |       |



**Material:**  
**Housing:** High Temperature Plastic UL94V-0.  
**Contacts:** Copper Alloy.  
**Plating:** Gold plating over Nickel on contact area;  
 Tin plating on Solder tail.  
**Electrical Characteristics:**  
**Current Rating:** 1.5 AMP.  
**Dielectric Withstanding Voltage:** AC 500V.  
**Insulation Resistance:** 1000 MΩ min.  
**Contact Resistance:** 30mΩ max.  
**Operating Temperature:** -55°C ~ +125°C .  
**\*RoHS Compliant**

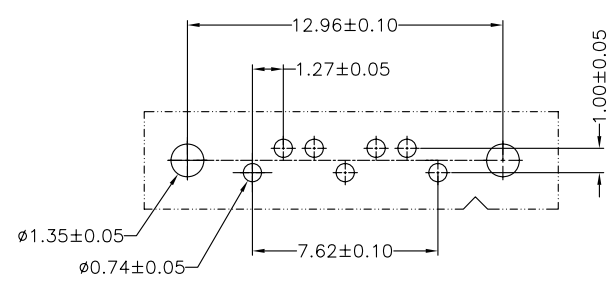


Section A-A

Section B-B

**7904- 07 M C 15 S B U -02**

Series ————  
 Position ————  
 M: Male  
 C: Selective Gold Plated  
 15: 15μ"  
 S: Straight  
 B: Black  
 U: Tube Package  
 Internal Code



P.C.Board Layout

|                   |                   |              |                        |     |
|-------------------|-------------------|--------------|------------------------|-----|
| <b>Tolerances</b> | <b>Dwg. No.</b>   | 7904D01007   | <b>Title:</b>          |     |
| x = ±0.5          | <b>Projection</b> |              | 7904 Series            |     |
| .x = ±0.38        | <b>Unit</b>       | mm           | <b>Scale</b>           | 1:1 |
| .xx = ±0.25       | <b>Drawn By</b>   | ZJJ 04/20'12 | SATA Straight Dip Type |     |

|                                      |     |                |    |
|--------------------------------------|-----|----------------|----|
| <b>OUPIIN</b>                        |     |                |    |
| OUPIIN ELECTRONIC(KUNSHAN) CO., LTD. |     |                |    |
| P/N: 7904-07MC15SBU-02               |     |                |    |
| <b>SHEET</b>                         | 1/1 | <b>Ver.No.</b> | A1 |