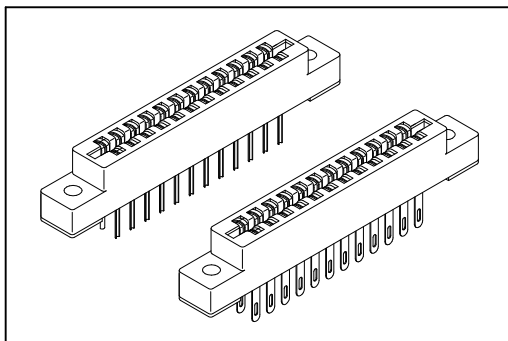


# 8706 Series

## Edge Connector 3.96mm(0.156")



### Material:

Housing: Thermoplastic Polyester Glass Filled UL94V-0.

Contacts: Copper Alloy.

### Electrical Characteristics:

Current Rating: 1 A.

Dielectric Withstanding Voltage: AC 500V.

Insulator Resistance: 1000MΩ min.

Contact Resistance: 20mΩ max.

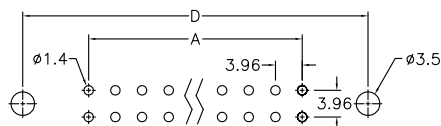
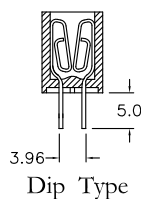
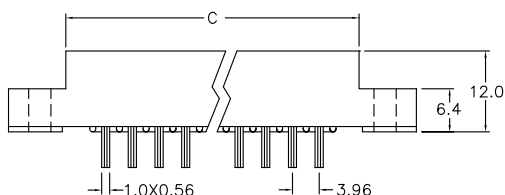
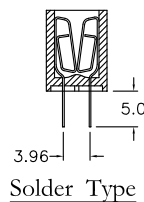
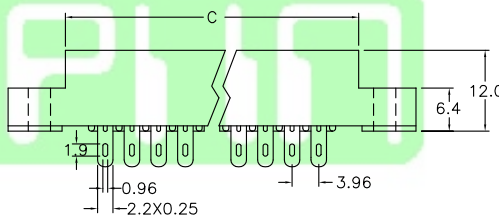
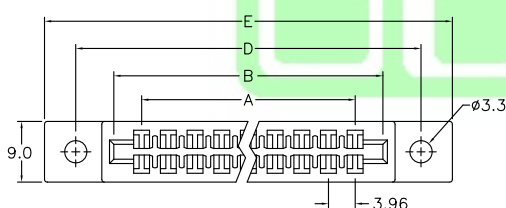
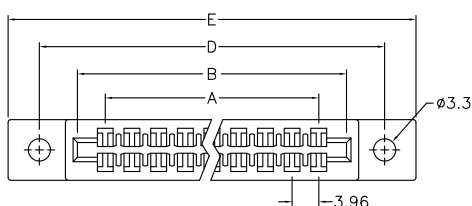
Operating Temperature: -55°C~+105°C.

### Features:

\* Accept 1.47mm~1.78mm(0.058"~0.070" ) thickness PC board.

\* Available in 12pin through 86pin.

\* Overstress protected contact design.



P.C. Board Layout

Position	Dimension				
	A	B	C	D	E
12	19.80	28.28	31.40	38.80	48.30
20	35.64	44.20	47.00	54.70	64.30
24	43.56	52.00	55.15	62.70	72.20
30	55.44	63.80	66.80	74.50	84.00
36	67.32	75.85	78.90	86.40	96.00
44	83.16	91.60	94.90	102.30	112.00
56	106.92	115.60	118.75	126.20	135.90
60	114.84	123.35	126.72	133.92	143.65
72	138.40	147.40	150.85	158.50	166.80
86	166.32	175.14	178.50	185.75	195.20

## Ordering Information

**8706-**  
Series

**86**  
No. of  
Pin Count

**G**  
G: Gold Plated

**00**  
00: G/F

**D**  
D: Dip Type  
S: Solder Type

**B**  
B: Box Package