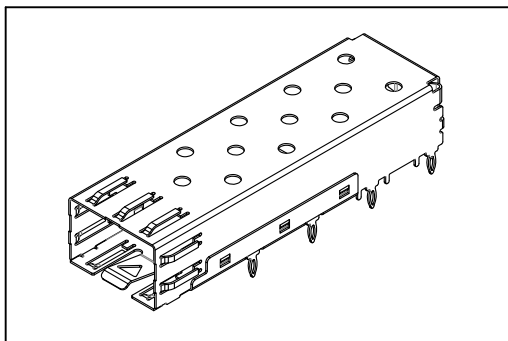


8951 Series

SFP Cage

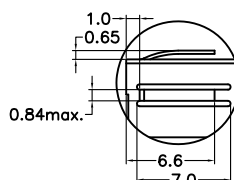
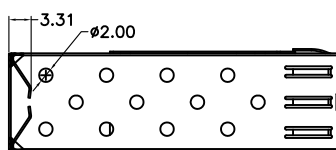


Material:

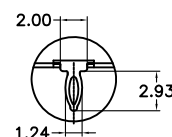
Cage: Copper Alloy.

Electrical Characteristics:

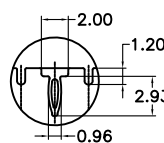
Operating Temperature: -55°C~+85°C.



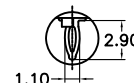
Detail A



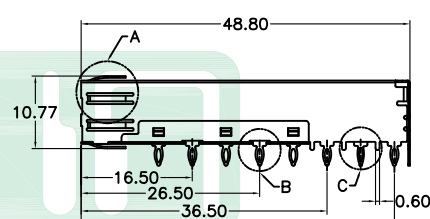
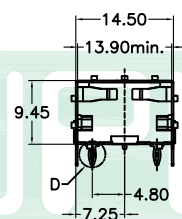
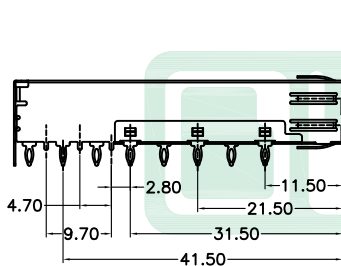
Detail B



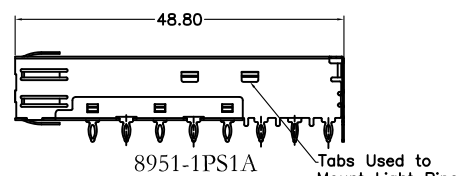
Detail C



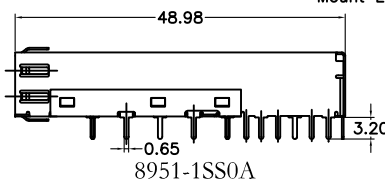
Detail D



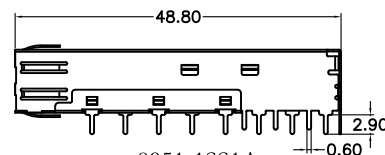
8951-1PS0A



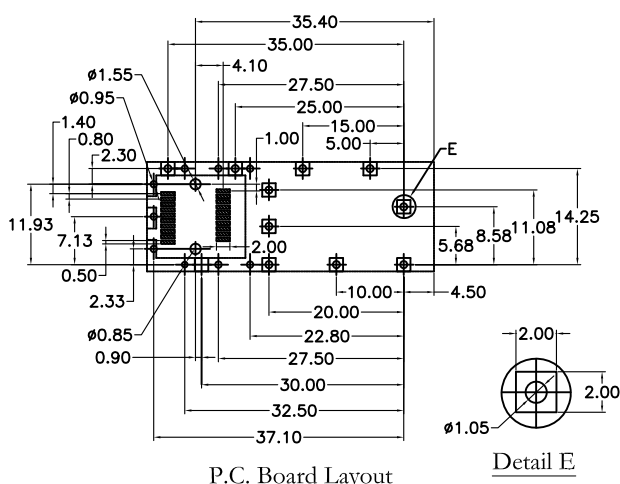
8951-1PS1A



8951-1SS0A



8951-1SS1A



P.C. Board Layout

Detail E

Ordering information

8951-
Series

1
Port

P
P: Press Fit Type
S: Dip Type

S
S: Spring

0
0: Without Light Pipe
1: With Light Pipe

A
A: Tray Package

Information including designs, specifications and components may be changed or updated without notice.

CB11