

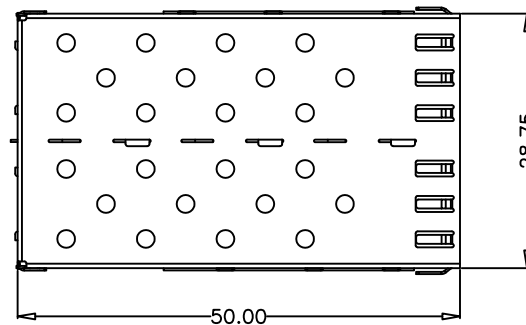
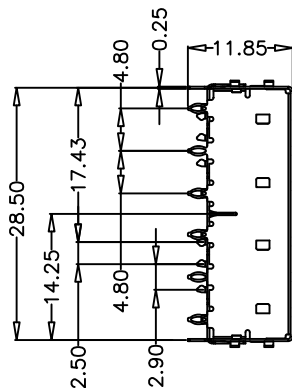
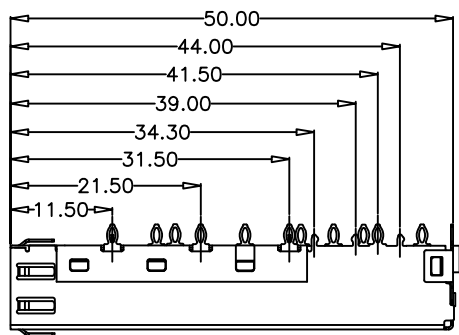
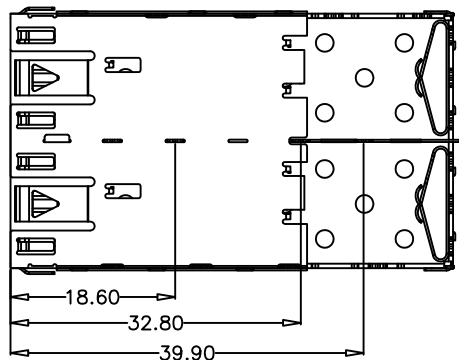
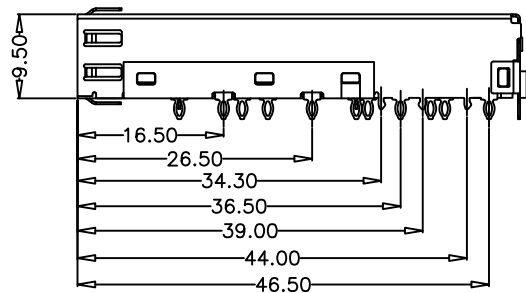
REV.	SPECIFICATION	ECN NO.	APPD.

**Material:**


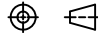
Cage: Copper Alloy, Nickel Plating.

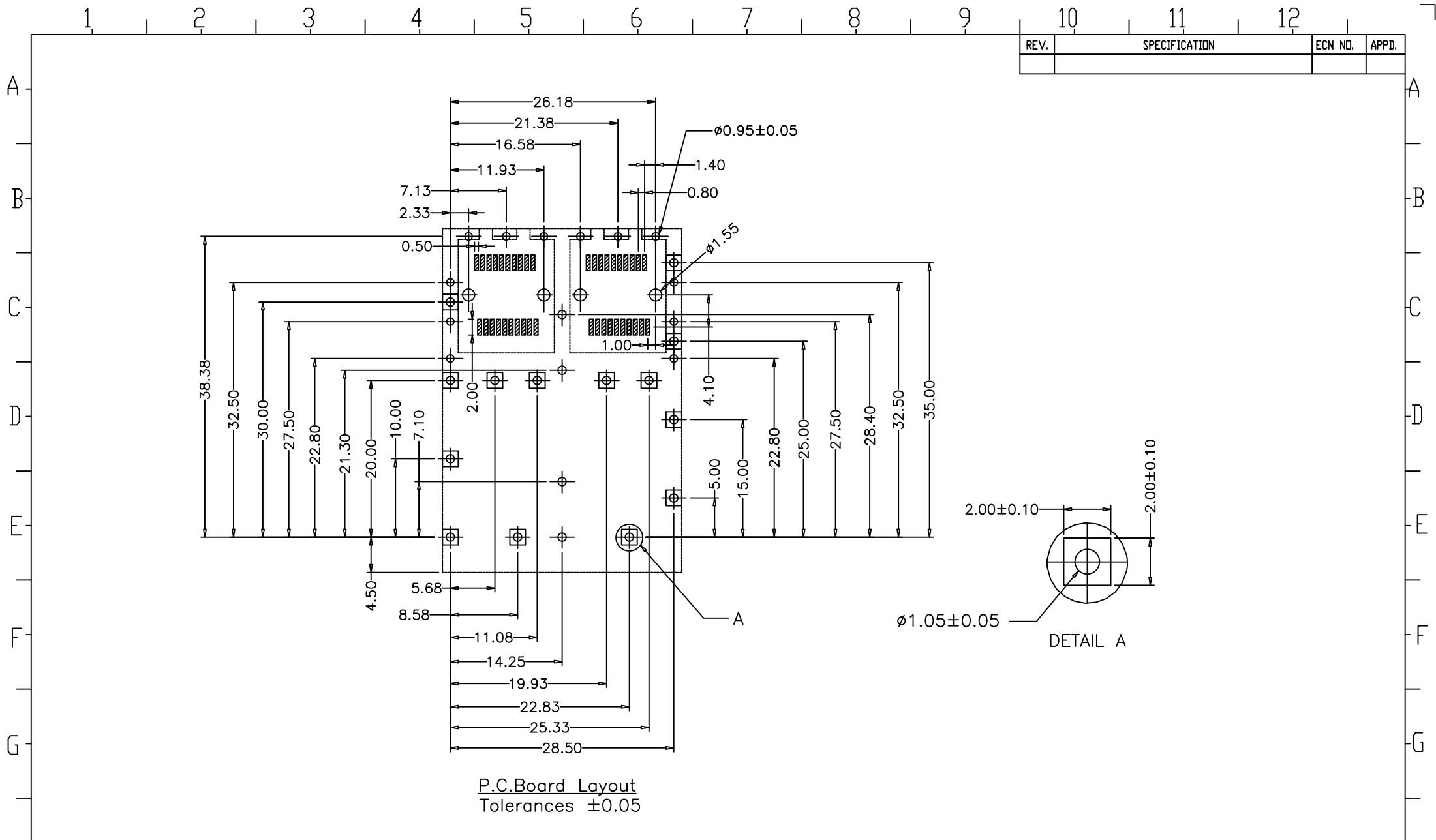
Operating Temperature: -55°C ~ +85°C

**\*RoHS Compliant**





8951 - 2    P    S    0    A  
 Series 2: 2 Ports    P: Press Fit    S: Spring    0: W/O Light Pipe    A: Tray Package

Tolerances	Dwg. No.	8951D00006	Title:		 OUPIIN ELECTRONIC(KUNSHAN) CO., LTD. P/N: 8951-2PS0A
.X=±0.30	Projection		8951 Series		
.XX=±0.20	Unit	mm	Scale	1:1	
.XXX=±0.10	Drawn By	Vic Lyu11/19'14	P/N: 8951-2PS0A		
			0502	SHEET	
					1/2
					Ver. No.
					X1



P.C.Board Layout  
Tolerances  $\pm 0.05$

REV.	SPECIFICATION	ECN NO.	APPD.

Tolerances	Dwg. No.	8951D00006	Title:		 <b>OUPIIN ELECTRONIC(KUNSHAN) CO., LTD.</b> P/N: 8951-2PS0A SHEET 2/2 Ver. No. X1
.X= $\pm 0.30$	Projection		8951 Series		
.XX= $\pm 0.20$	Unit	mm	Scale	1:1	
.XXX= $\pm 0.10$	Drawn By	Vic Lyu11/19'14	SFP 1X2 Cage, R/A, Metal Shield Press Fit Type, With Spring		
			① 502		