

REV.	SPECIFICATION	ECN NO.	APPD.

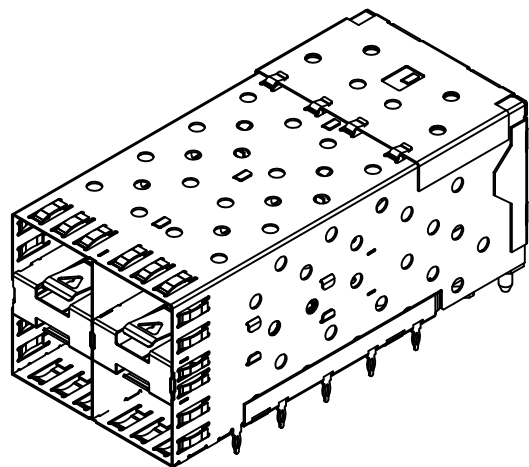
- 8952-A 2X2 C 15 P S x A
- Series
  - 2X2 Ports
  - C: Selective Gold Plated
  - 15: 15 μ"
  - 30: 30 μ"
  - A: Tray Package
  - 0: Without Light Pipes
  - 1: With Inner Light Pipes
  - 2: With Outer Light Pipes
  - 3: With Inner & Outer Light Pipes
  - S: Spring
  - P: Press Fit

Tolerances	Dwg. No.	8952D00011	
	Date	⊕ ⊖	
	Unit	mm	Scale 1/1
	Drawn By	Scott 07/01'16	

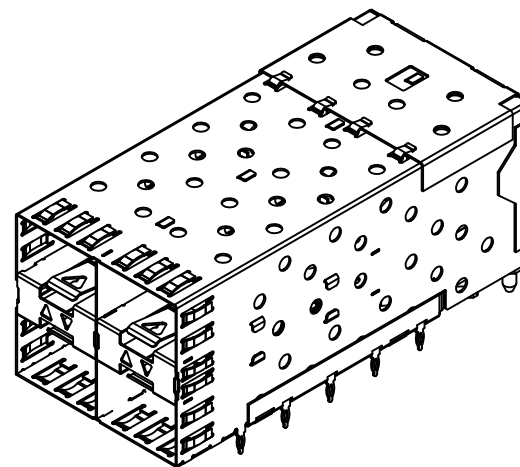
Title: 8952 Series  
 SFP 2X2 Cage, R/A, Metal Shield  
 Press Fit Type With Connector

<b>OUPIN</b>			
OUPIN ELECTRONIC(KUNSHAN) CO., LTD.			
P/N: 8952-A2X2C15PSxA			
SHEET	1/3	Ver.No.	A1

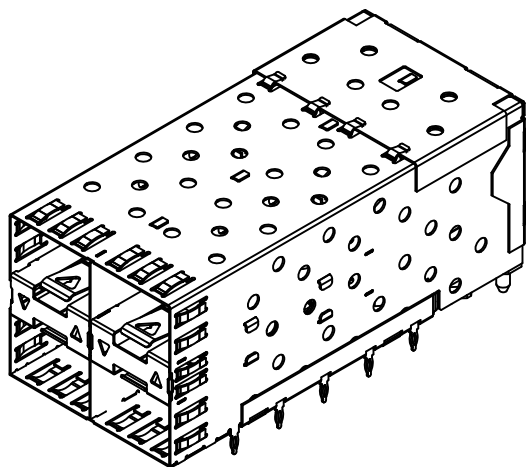
REV.	SPECIFICATION	ECN NO.	APPD.



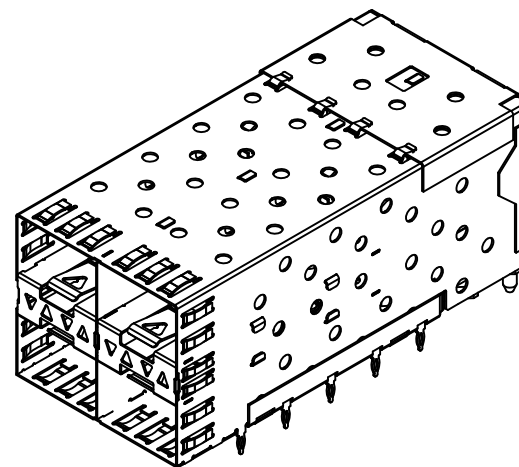
Without Light Pipes




With Inner Light Pipes



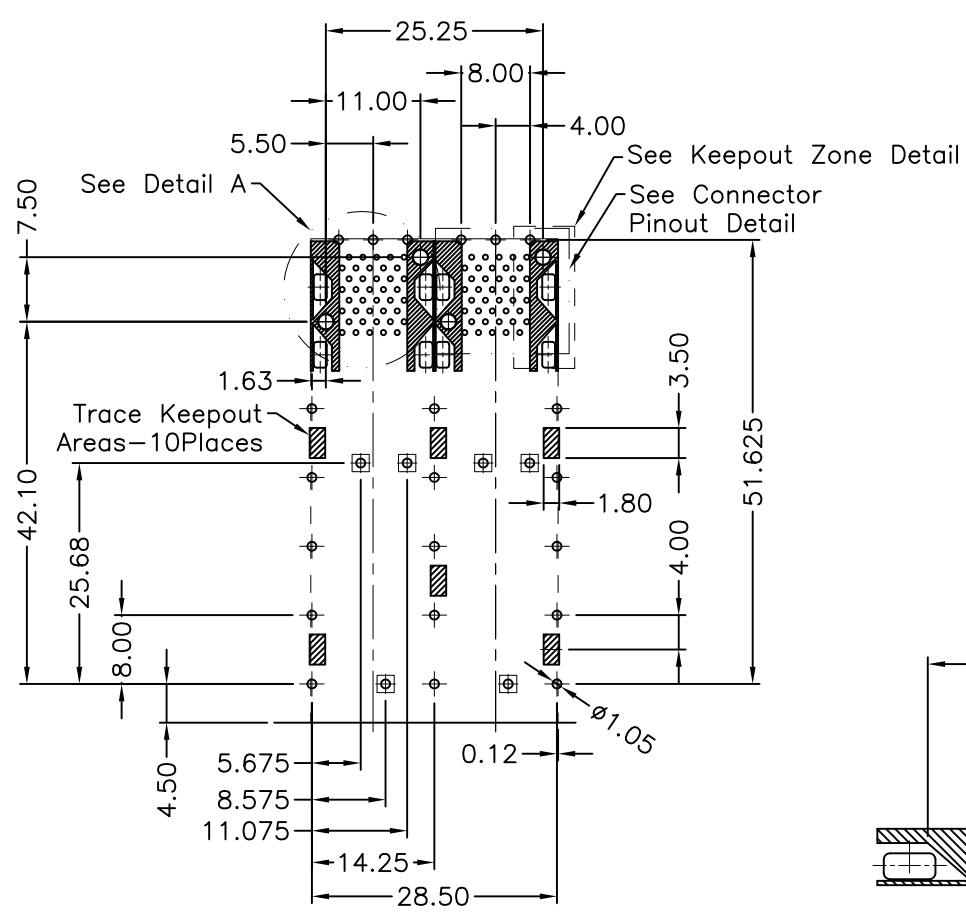
With Outer Light Pipes



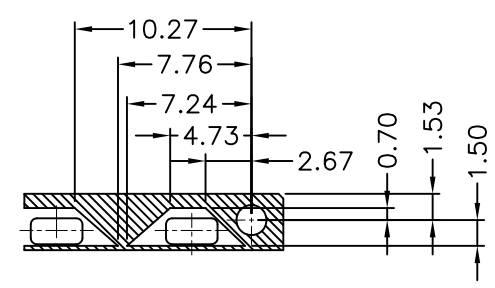
With Inner & Outer Light Pipes

Tolerances	Dwg. No.	8952D00011		Title:		 OUPIIN ELECTRONIC(KUNSHAN) CO., LTD. P/N: 8952-A2X2C15PSxA	
XX = ±0.25	Date	⊕ ◀		8952 Series			
XXX = ±0.15	Unit	mm	Scale	1/1		SHEET	
	Drawn By	Scott 07/01'16		Press Fit Type With Connector		2/3	Ver.No.
				①665			A1

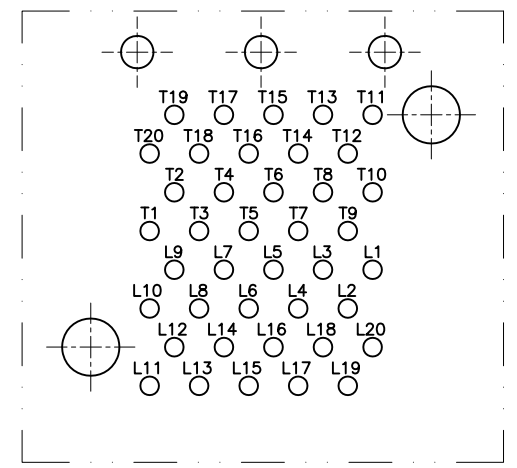
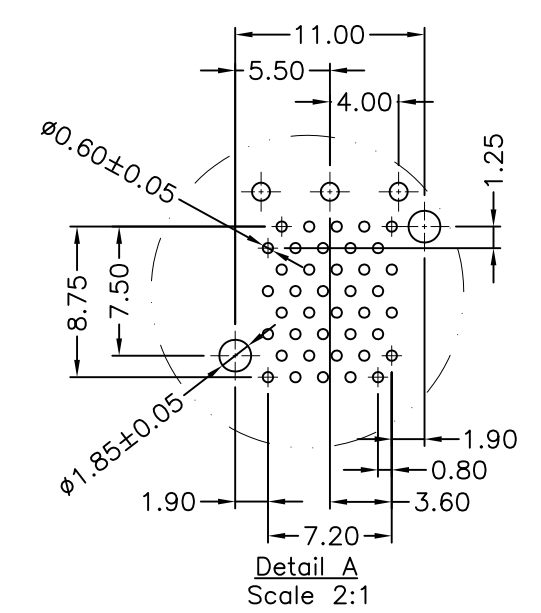
REV.	SPECIFICATION	ECN NO.	APPD.



Recommended P.C.Board Layout (Component Side)  
P.C.Board Tolerance  $\pm 0.05$   
Recommended P.C.Board Thickness:2.36  
(Minimum P.C.Board Thickness:1.57)



Detail-Lightpipe Location and Other Zones  
Scale 2:1



Connetton Pinout Detail  
Component Side of Board

Tolerances XX = $\pm 0.25$ XXX = $\pm 0.15$	Dwg. No.	8952D00011		Title: 8952 Series SFP 2X2 Cage, R/A, Metal Shield Press Fit Type With Connector ①665	 <b>OUPIN ELECTRONIC(KUNSHAN) CO., LTD.</b> P/N: 8952-A2X2C15PSxA SHEET 3/3 Ver.No. A1	
	Date	⊕ ◀				
	Unit	mm	Scale			1/1
	Drawn By	Scott 07/01'16				