

REV.	SPECIFICATION	ECN NO.	APPD.

**Material:**

Housing: High Temperature Plastic UL94V-0.

Contacts: Copper Alloy.

Shell: Metal.

Plating: 30u" min. Ni & Au Flash on Contact Area.  
80u" min. Matte Tin Plated on Solder Area.  
50u" min. Nickel under Plating.

**Electrical Characteristics:**

Current Rating: 5.0A for VBUS and GND.

(i.e., Pins A4,A9,B4,B9)

1.25A for Vconn and GND.

(i.e., Pins B5,A1,A12,B1,B12)

0.25A for all the others contacts.

Dielectric Withstanding Voltage: AC 100V min .

Insulator Resistance: 100MΩ min. at DC 250V

Contact Resistance: 40mΩ max.

Operating Temperature: -55C~+85°C.

**Mechanical Characteristics:**

Insertion Force: 5~20N.

Extraction Force: 8~20N from 1~1000 Cycles.


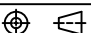
6~20N from 1001~10000 Cycles.

Durability: 10000 mating cycles.

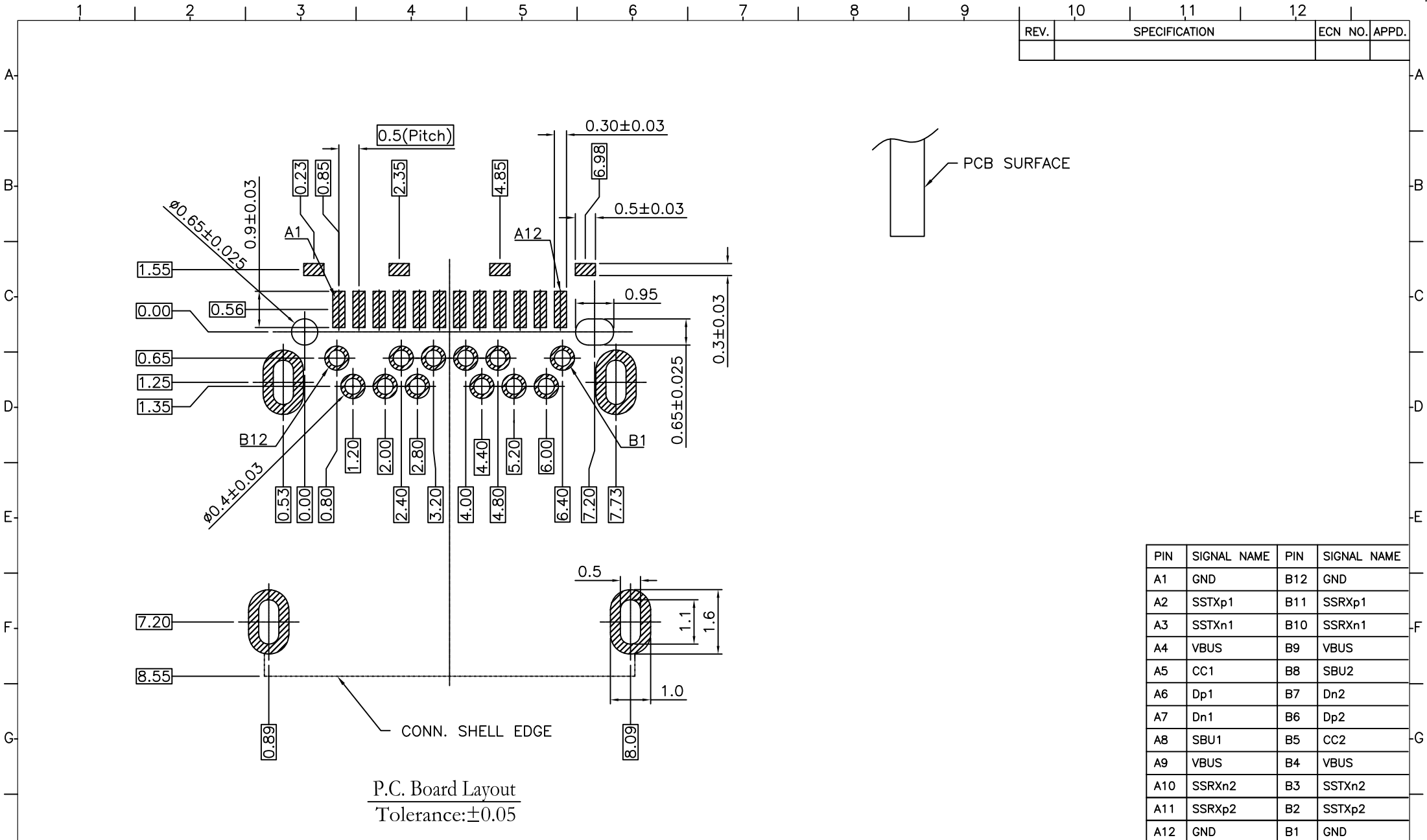
**\*RoHS Compliant.**

Speed: 10Gbps.

8975-C 24 C 30 RD B 1 P T  
 Series Position C: Selective Gold 30: 30u" RD: RA, B: Black Type 1 P: With Post T: Tape & Reel  
 Plated Solder + SMD Package

Tolerances	Dwg No.	8975D02001	Title:		 OUPIIN ELECTRONIC(KUNSHAN) CO., LTD. P/N: 8975-C24C30RDB1PT SHEET 1/2 Ver. No. A5
X. = ±0.50	Projection		8975 Series		
.X = ±0.30	Unit mm	Scale	USB 3.1 C Type		
.XX = ±0.20	Drawn By	Scott 09/08'16	Receptacle Right Angle		

REV.	SPECIFICATION	ECN NO.	APPD.



PIN	SIGNAL NAME	PIN	SIGNAL NAME
A1	GND	B12	GND
A2	SSTXp1	B11	SSRXp1
A3	SSTXn1	B10	SSRXn1
A4	VBUS	B9	VBUS
A5	CC1	B8	SBU2
A6	Dp1	B7	Dn2
A7	Dn1	B6	Dp2
A8	SBU1	B5	CC2
A9	VBUS	B4	VBUS
A10	SSRXn2	B3	SSTXn2
A11	SSRXp2	B2	SSTXp2
A12	GND	B1	GND

P.C. Board Layout  
Tolerance: ±0.05

<b>Tolerances</b>	<b>Dwg No.</b>	8975D02001
X. = ±0.50	<b>Projection</b>	
.X = ±0.30	<b>Unit</b>	mm
.XX = ±0.20	<b>Scale</b>	1:1
	<b>Drawn By</b>	Scott 09/08'16

**Title:**  
8975 Series  
USB 3.1 C Type  
Receptacle Right Angle

**OUPIN**  
OUPIN ELECTRONIC(KUNSHAN) CO., LTD.  
P/N: 8975-C24C30RDB1PT

<b>SHEET</b>	2/2	<b>Ver. No.</b>	A5
--------------	-----	-----------------	----