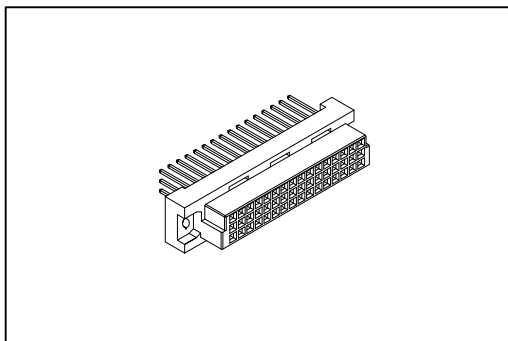


9001 Series

DIN41612 Half C Type Female



Material:

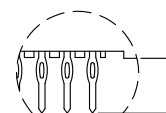
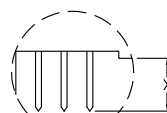
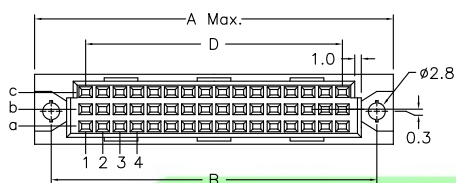
Housing: Thermoplastic Polyester Glass Filled UL94V-0.
Contacts: Copper Alloy.

Electrical Characteristics:

Current Rating: 2 A.
Dielectric Withstanding Voltage: AC 1000V.
Insulator Resistance: 1000MΩ min.
Contact Resistance: 20mΩ max.
Operating Temperature: -55°C +125°C.

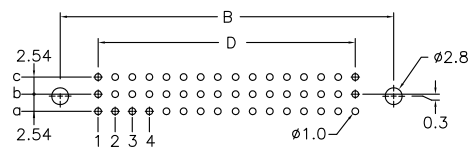
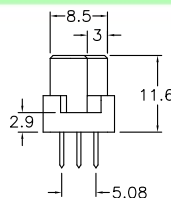
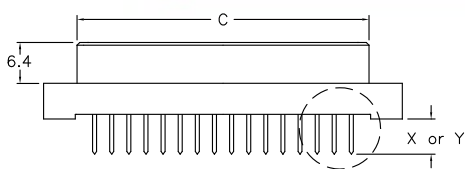
Features:

- * Mates with Male 3Row Half
9001-15 Half C Type.
9001-17 Half R Type.



Dip Type

Press Fit Type



P.C. Board Layout

Length	1	2	W1	W2
X	4.0	2.5	13	17
Y	4.6	6.3	13	17

Position	A	B	C	D
48/32/24/16/8	55.0	49.36	44.40	38.10
30/20/15/10/5	39.8	34.12	29.20	22.86
Pitch	Position	Rows with Contacts	Contact Arrange	
2.54mm	48	a b c	C-#-### b-#### a-#### 1 2 3 4	
	32	a - c	C-#-### b-#### a-#### 1 2 3 4	
	30	a b c	C-#-### b-#### a-#### 1 2 3 4	
	20	a - c	C-#-### b-#### a-#### 1 2 3 4	
	16	a - -	C-#-### b-#### a-#### 1 2 3 4	
	10	a - -	C-#-### b-#### a-#### 1 2 3 4	
5.08mm	24	a b c	C-#-### b-#### a-#### 1 2 3 4	
	16	a - c	C-#-### b-#### a-#### 1 2 3 4	
	15	a b c	C-#-### b-#### a-#### 1 2 3 4	
	10	a - c	C-#-### b-#### a-#### 1 2 3 4	
	8	a - -	C-#-### b-#### a-#### 1 2 3 4	
5	a - -	C-#-### b-#### a-#### 1 2 3 4		

Ordering information

9001- 1 6 48 1 C 00 P L1 A
 Series 1: 2.54mm 6: Female Position 1: Dip Length 2: Dip Length W1: Dip Length W2: Dip Length
 C: Selective Gold Plated 00: G/F P: Press Fit L1: With Lock A: Tray Package
 See Page CA03

9001 Series

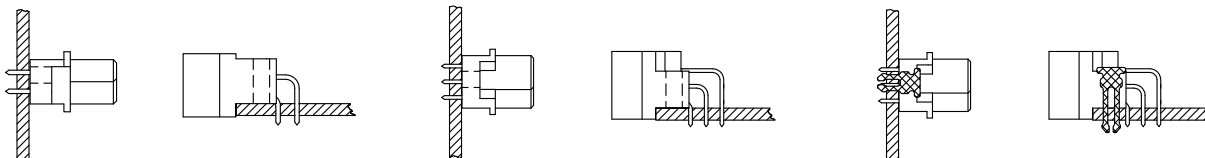
DIN41612 Mating Introduce



2 Row insulator
B (Standard mounting)
Mounting axis
of the connector

3 Row insulator
C (Standard mounting)
Mounting axis
of the connector

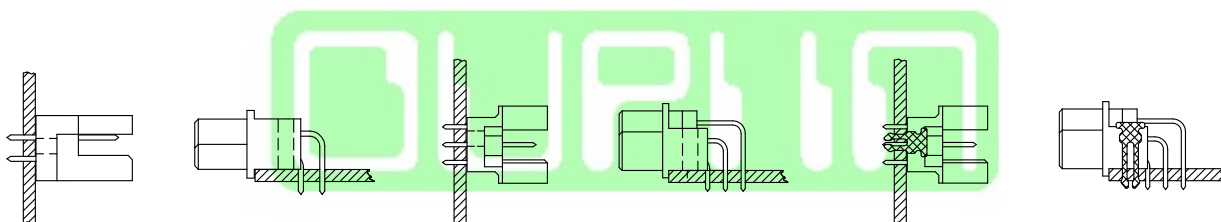
Board lock available
L1=P.C.B. Thickness 1.6 ~2.0 mm
L2=P.C.B. Thickness 2.8 ~3.2 mm



Q (Reverse mounting)
Mounting axis
of the connector

R (Reverse mounting)
Mounting axis
of the connector

Board lock available
L1=P.C.B. Thickness 1.6 ~2.0 mm
L2=P.C.B. Thickness 2.8 ~3.2 mm



I.D.C. Type Ribbon Cable

Press Fit Type
2 Row insulator

3 Row insulator

2 Row insulator

3 Row insulator

