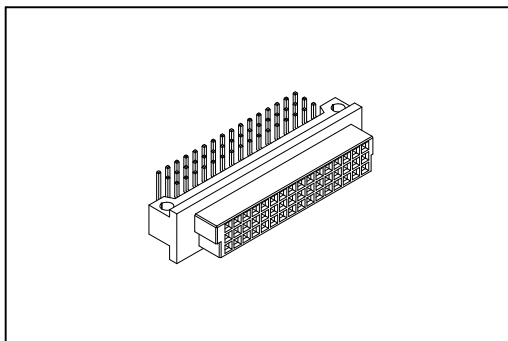


# 9001 Series

## DIN41612 Half R Type Female



### Material:

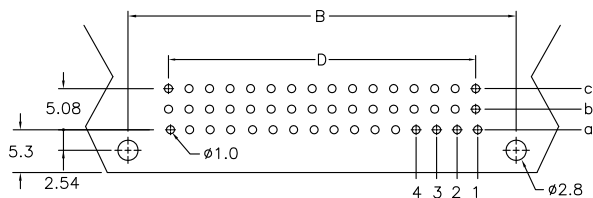
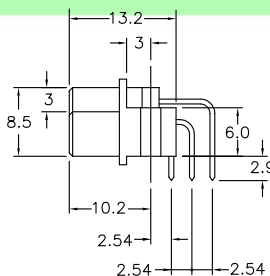
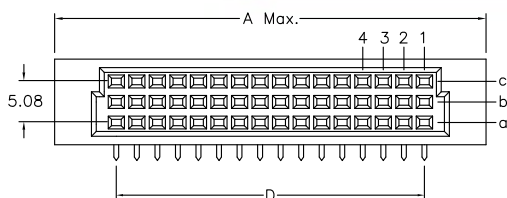
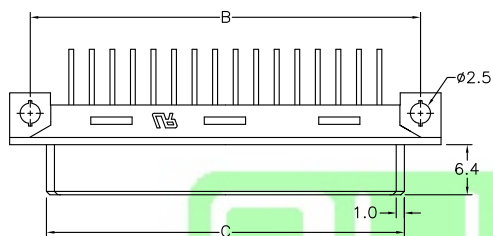
Housing: Thermoplastic Polyester Glass Filled UL94V-0.  
 Contacts: Copper Alloy.

### Electrical Characteristics:

Current Rating: 2 A.  
 Dielectric Withstanding Voltage: AC 1000V.  
 Insulator Resistance: 1000MΩ min.  
 Contact Resistance: 20mΩ max.  
 Operating Temperature: -55°C ~+125°C.

### Features:

- \* Mates with Male 3Row Half
- 9001-17 Half R Type.
- 9001-15 Half C Type.



P.C. Board Layout

Dimension				
Position	A	B	C	D
48/32/16/24/8	54.00	48.26	44.40	38.10
30/20/15/10/5	38.80	33.02	29.20	22.86
Pitch	Position	Rows with Contacts	Contact Arrange	
2.54mm	48	a b c		
	32	a - c		
	30	a b c		
	20	a - c		
	16	a - -		
	10	a - -		
5.08mm	24	a b c		
	16	a - c		
	15	a b c		
	10	a - c		
	8	a - -		
	5	a - -		

## Ordering information

**9001-** Series    **1**    **8**    **48**    **1**    **C**    **00**    **L1**    **A**  
 Series    1: 2.54mm    8: Female    Position    1: Dip Length    C: Selective Gold Plated    00: G/F    Blank: W/O Lock    L1: With Lock    A: Tray Package  
 2: 5.08mm    See Page CA03

# 9001 Series

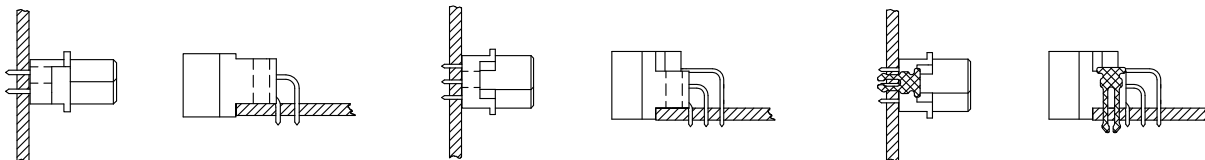
## DIN41612 Mating Introduce



2 Row insulator  
B (Standard mounting)  
Mounting axis  
of the connector

3 Row insulator  
C (Standard mounting)  
Mounting axis  
of the connector

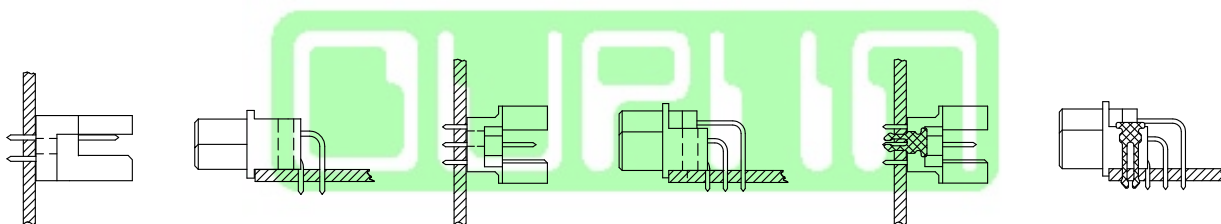
Board lock available  
L1=P.C.B. Thickness 1.6 ~2.0 mm  
L2=P.C.B. Thickness 2.8 ~3.2 mm



Q (Reverse mounting)  
Mounting axis  
of the connector

R (Reverse mounting)  
Mounting axis  
of the connector

Board lock available  
L1=P.C.B. Thickness 1.6 ~2.0 mm  
L2=P.C.B. Thickness 2.8 ~3.2 mm



I.D.C. Type Ribbon Cable

Press Fit Type  
2 Row insulator

3 Row insulator

2 Row insulator

3 Row insulator

