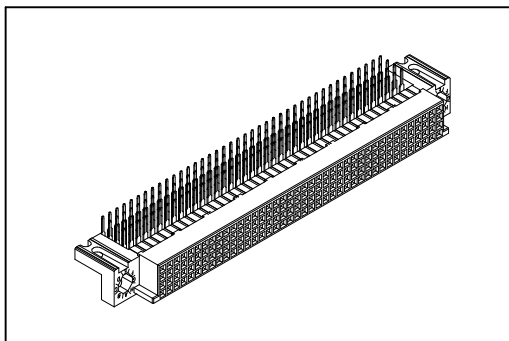


9001 Series

DIN41612 240P Female Right Angle



Material:

Housing: High Temperature Plastic UL94V-0.

Contacts: Copper Alloy.

Electrical Characteristics:

Current Rating: 2 A.

Dielectric Withstanding Voltage: AC 1000V.

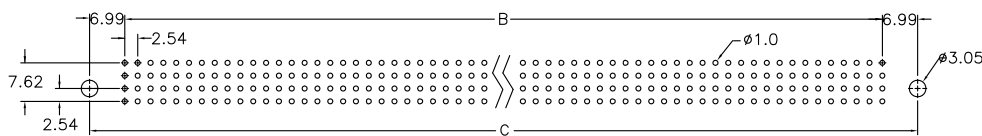
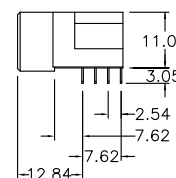
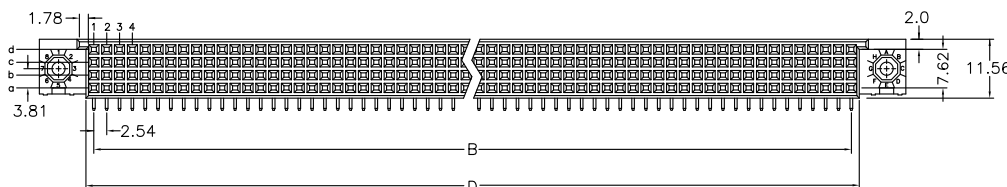
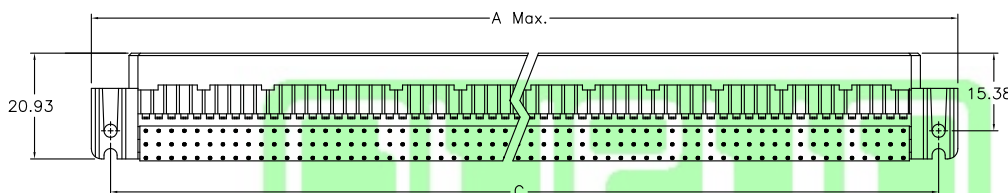
Insulator Resistance: 1000MΩ min.

Contact Resistance: 20mΩ max.

Operating Temperature: -55°C ~+125°C .

Features:

* Mates with male 4 Row 9001-71, 73.



P.C. Board Layout

Position	Dimension			
	A	B	C	D
100	82.55	60.96	74.93	64.10
128	100.33	78.74	92.71	81.88
160	120.65	99.06	113.03	102.20
200	146.05	124.46	138.43	127.60
240	171.45	149.86	163.83	153.00

Ordering information

9001- 7 4 240 1 C 00 A
 Series 7: 2.54mm 4: Female Position 1: Dip Length C: Selective Gold Plated 00: G/F A: Tray Package