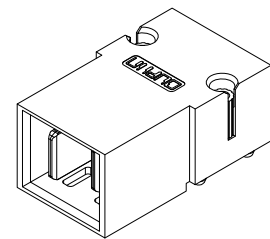
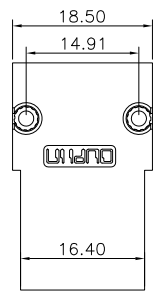


REV.	SPECIFICATION	ECN NO.	APPD.
X10			



**Material and Plating:**

Housing: LCP, 30% Glass Filled,UL94V-0 , BLACK.  
 Power Contacts: High Conductivity Copper ,  
 Au(3u")+Pd/Ni (27u") gold plated on  
 Contact Area and 80~160u"  
 Tin Plated on Solder Tail over nickel  
 50-120u" under plated .

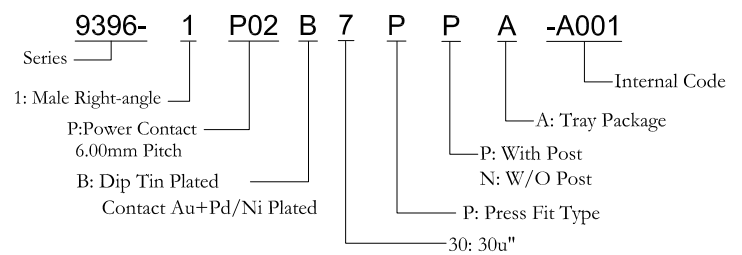
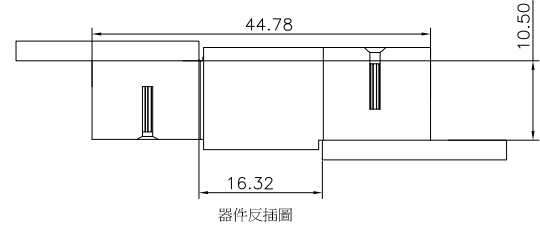
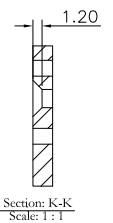
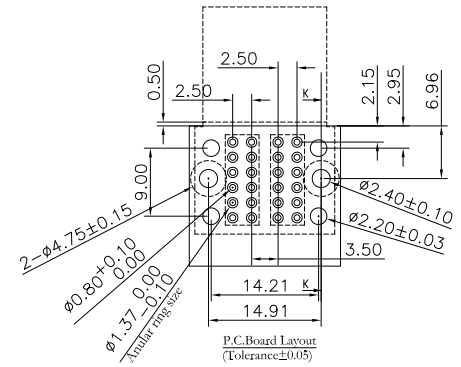
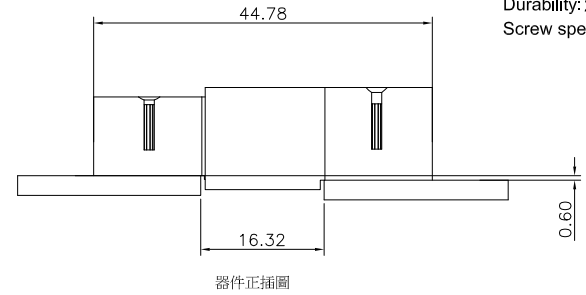
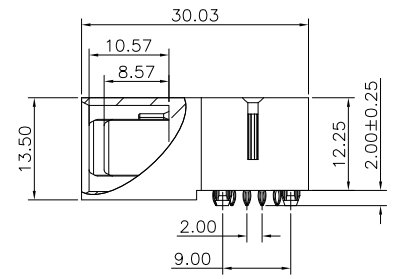
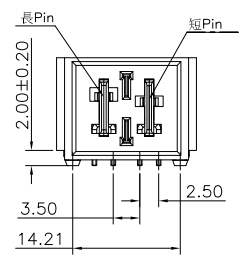
**Electrical Characteristics:**

Current Rating: Power Pin 50 AMP.  
 Dielectric Withstanding Voltage:AC 1500V For 1 minute.  
 Insulator Resistance: 1500MΩ min. at DC 500V.  
 Contact Resistance: Power Pin 5.0mΩ max.  
 Operating Temperature: -40°C ~+85°C .

**\*RoHS Compliant**

**Notes:**

Durability: 200 cycles Min.  
 Screw specification:GB819-85\_M2X10, Shipment quantity:3PCS.



Tolerances	Dwg. No.	9396-D0000-001	Title:	
x = ±0.5	Projection		Backplane power connector	
.x = ±0.25	Unit	mm	Scale	1:1
.xx = ±0.15	Drawn By	Y W 5/31'2016		

OUPIN ELECTRONIC(KUNSHAN) CO., LTD.			
P/N: 9396-1P02B7PPA-A001			
SHEET	1/1	Ver. No.	X10