

https://www.phoenixcontact.com/cn/products/1755583



## PCB terminal block - PT 1,5/ 2-PH-5,0 - 1755583

Please be informed that the data shown in this PDF Document is generated from our Online Catalog. Please find the complete data in the user's documentation. Our General Terms of Use for Downloads are valid (<http://phoenixcontact.com/download>)

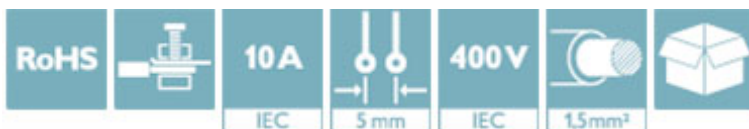
Plug component, Nominal current: 10 A, Rated voltage (III/2): 400 V, Number of positions: 2, Pitch: 5 mm, Connection method: Screw connection with tension sleeve, Color: green, Contact surface: Tin




The figure shows a 10-position version of the product

### Why buy this product

- Well-known connection principle allows worldwide use
- Low temperature rise, thanks to maximum contact force
- High terminal block capacity thanks to rectangular terminal block space



### Key Commercial Data

|                      |   |
|----------------------|---|
| Packing unit         | 250 STK   |
| GTIN                 | <br>4 046356 334129 |
| GTIN                 | 4046356334129   |
| Custom tariff number | 8536901900  |
| Sales Key            | AACFBA  |

### Technical data

#### Dimensions

|             |      |
|-------------|------|
| Pitch       | 5 mm |
| Dimension a | 5 mm |

#### General

|                             |                                      |
|-----------------------------|--------------------------------------|
| Range of articles           | PT 1,5/..-PH                         |
| Type of contact             | Female connector                     |
| Number of positions         | 2                                    |
| Connection method           | Screw connection with tension sleeve |
| Insulating material group   | I                                    |
| Rated surge voltage (III/3) | 4 kV                                 |

https://www.phoenixcontact.com/cn/products/1755583



## PCB terminal block - PT 1,5/ 2-PH-5,0 - 1755583

### Technical data

#### General

|  |                     |
|--|---------------------|
| Rated surge voltage (III/2)            | 4 kV                |
| Rated surge voltage (II/2)             | 4 kV                |
| Rated voltage (III/3)                  | 250 V               |
| Rated voltage (III/2)                  | 400 V               |
| Rated voltage (II/2)                   | 630 V               |
| Connection in acc. with standard       | EN-VDE              |
| Nominal current $I_N$                  | 10 A                |
| Nominal cross section                  | 1.5 mm <sup>2</sup> |
| Maximum load current                   | 10 A                |
| Insulating material                    | PA                  |
| Flammability rating according to UL 94 | V0                  |
| Stripping length                       | 6 mm                |
| Tightening torque, min                 | 0.35 Nm             |
| Tightening torque max                  | 0.4 Nm              |

#### Connection data

|  |                      |
|--|----------------------|
| Conductor cross section solid min.   | 0.2 mm <sup>2</sup>  |
| Conductor cross section solid max.   | 2.5 mm <sup>2</sup>  |
| Conductor cross section flexible min.                                      | 0.2 mm <sup>2</sup>  |
| Conductor cross section flexible max.                                      | 2.5 mm <sup>2</sup>  |
| Conductor cross section flexible, with ferrule without plastic sleeve min. | 0.25 mm <sup>2</sup> |
| Conductor cross section flexible, with ferrule without plastic sleeve max. | 1 mm <sup>2</sup>    |
| Conductor cross section flexible, with ferrule with plastic sleeve min.    | 0.25 mm <sup>2</sup> |
| Conductor cross section flexible, with ferrule with plastic sleeve max.    | 1 mm <sup>2</sup>    |
| Conductor cross section AWG min.   | 26                   |
| Conductor cross section AWG max.   | 12                   |
| Minimum AWG according to UL/CUL  | 28                   |
| Maximum AWG according to UL/CUL  | 14                   |

#### Standards and Regulations

|  |        |
|--|--------|
| Connection in acc. with standard       | EN-VDE |
|  | CSA    |
| Flammability rating according to UL 94 | V0     |

#### Environmental Product Compliance

|            |   |
|------------|---|
| China RoHS | Environmentally Friendly Use Period = 50  |
|            | For details about hazardous substances go to tab "Downloads", Category "Manufacturer's declaration" |

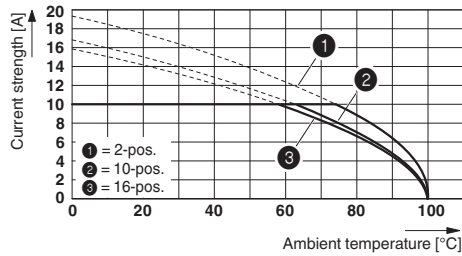
### Drawings

https://www.phoenixcontact.com/cn/products/1755583

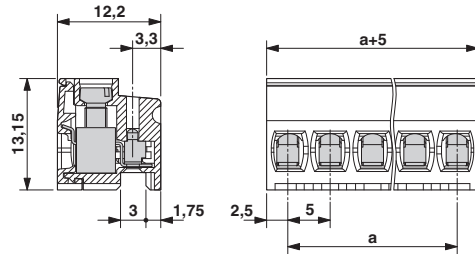


# PCB terminal block - PT 1,5/ 2-PH-5,0 - 1755583

Diagram



Dimensional drawing



Derating curve for: PT 1,5/...-PH-5,0 with PST 1,3/...5,0

## Approvals

### Approvals

#### Approvals

CSA / UL Recognized / cUL Recognized / EAC / cULus Recognized

#### Ex Approvals

### Approval details

|                                |  |   |       |
|--------------------------------|--|---|-------|
| CSA                            |  | <a href="http://www.csagroup.org/services/testing-and-certification/certified-product-listing/">http://www.csagroup.org/services/testing-and-certification/certified-product-listing/</a> | 13631 |
|                                |  | B   | D     |
| mm <sup>2</sup> /AWG/kcmil     |  | 26-14   | 26-14 |
| Nominal current I <sub>N</sub> |  | 5 A   | 5 A   |
| Nominal voltage U <sub>N</sub> |  | 300 V   | 300 V |

|                                |  |   |              |
|--------------------------------|--|---|--------------|
| UL Recognized                  |  | <a href="http://database.ul.com/cgi-bin/XYV/template/LISEXT/1FRAME/index.htm">http://database.ul.com/cgi-bin/XYV/template/LISEXT/1FRAME/index.htm</a> | FILE E 60425 |
|                                |  | B   | D            |
| mm <sup>2</sup> /AWG/kcmil     |  | 28-14   | 28-14        |
| Nominal current I <sub>N</sub> |  | 10 A  | 10 A         |
| Nominal voltage U <sub>N</sub> |  | 300 V   | 300 V        |

|                            |  |   |              |
|----------------------------|--|---|--------------|
| cUL Recognized             |  | <a href="http://database.ul.com/cgi-bin/XYV/template/LISEXT/1FRAME/index.htm">http://database.ul.com/cgi-bin/XYV/template/LISEXT/1FRAME/index.htm</a> | FILE E 60425 |
|                            |  | B   | D            |
| mm <sup>2</sup> /AWG/kcmil |  | 28-14   | 28-14        |

<https://www.phoenixcontact.com/cn/products/1755583>




## PCB terminal block - PT 1,5/ 2-PH-5,0 - 1755583

### Approvals

|                                | B     | D     |
|--------------------------------|-------|-------|
| Nominal current I <sub>N</sub> | 10 A  | 10 A  |
| Nominal voltage U <sub>N</sub> | 300 V | 300 V |

|     |   |         |
|-----|---|---------|
| EAC |  | B.01742 |
|-----|---|---------|

|                  |   |   |
|------------------|---|---|
| cULus Recognized |  | <a href="http://database.ul.com/cgi-bin/XYV/template/LISEXT/1FRAME/index.htm">http://database.ul.com/cgi-bin/XYV/template/LISEXT/1FRAME/index.htm</a> |
|------------------|---|---|

Phoenix Contact 2016 © - all rights reserved  
<http://www.phoenixcontact.com>