

<https://www.phoenixcontact.com/cn/products/1770393>



PCB terminal block - PLH 16/ 2-10 - 1770393

Please be informed that the data shown in this PDF Document is generated from our Online Catalog. Please find the complete data in the user's documentation. Our General Terms of Use for Downloads are valid (<http://phoenixcontact.com/download>)

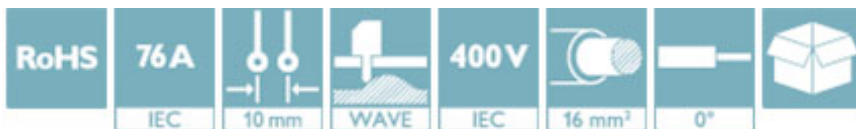


PCB terminal block, Nominal current: 76 A, Nom. voltage: 400 V, Pitch: 10 mm, Number of positions: 2, Connection method: Push-lock spring connection, Mounting: Wave soldering, Conductor/PCB connection direction: 0°, Color: green

The figure shows a 5-pos. version of the product

Why buy this product

- Tool-free lever principle enables time-saving connection and release of conductors with/without ferrules
- Defined contact force ensures that contact remains stable over the long term
- Time-saving push-in connection when lever is closed
- Quick and convenient testing using integrated test option



Key Commercial Data

Packing unit	25 STK
Minimum order quantity	25 STK
GTIN	
GTIN	4046356458276
Custom tariff number	8536901900
Sales Key	AABEAA

Technical data

Dimensions

Length	30.5 mm
Pitch	10 mm
Dimension a	10 mm
Width	21.4 mm
Constructional height	29 mm
Height	33.5 mm
Length of the solder pin	4.5 mm
Pin dimensions	1,2 x 1,2 mm

<https://www.phoenixcontact.com/cn/products/1770393>

PCB terminal block - PLH 16/ 2-10 - 1770393

Technical data

Dimensions

Pin spacing	12.5 mm
Hole diameter	1.6 mm

General

Range of articles	PLH 16/
Insulating material group	I
Rated surge voltage (III/3)	4 kV
Rated surge voltage (III/2)	4 kV
Rated surge voltage (II/2)	4 kV
Rated voltage (III/3)	400 V
Rated voltage (III/2)	400 V
Rated voltage (II/2)	800 V
Nominal current I_N	76 A
Nominal cross section	16 mm ²
Insulating material	PA
Solder pin surface	Sn
Flammability rating according to UL 94	V0
Stripping length	18 mm
Number of positions	2

Connection data

Conductor cross section solid min.	0.75 mm ²
Conductor cross section solid max.	16 mm ²
Conductor cross section flexible min.	0.75 mm ²
Conductor cross section flexible max.	25 mm ²
Conductor cross section flexible, with ferrule without plastic sleeve min.	0.75 mm ²
Conductor cross section flexible, with ferrule without plastic sleeve max.	16 mm ²
Conductor cross section flexible, with ferrule with plastic sleeve min.	0.75 mm ²
Conductor cross section flexible, with ferrule with plastic sleeve max.	10 mm ²
Conductor cross section AWG min.	18
Conductor cross section AWG max.	4
2 conductors with same cross section, stranded, TWIN ferrules with plastic sleeve, min.	0.75 mm ²
2 conductors with same cross section, stranded, TWIN ferrules with plastic sleeve, max.	4 mm ²

Standards and Regulations

Connection in acc. with standard	UL
Flammability rating according to UL 94	V0

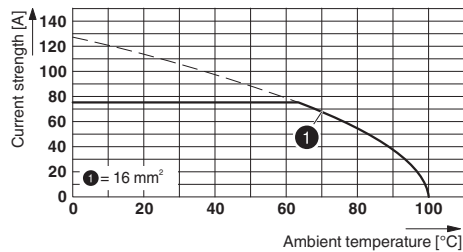
Environmental Product Compliance

China RoHS	Environmentally friendly use period: unlimited = EFUP-e
	No hazardous substances above threshold values

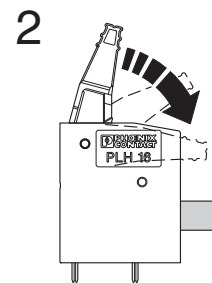
PCB terminal block - PLH 16/ 2-10 - 1770393

Drawings

Diagram



Functional drawing



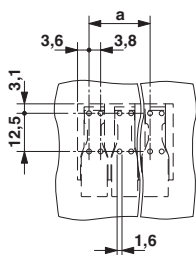
Type: PLH 16/...-10

Tested in accordance with DIN EN 60512-5-2:2003-01

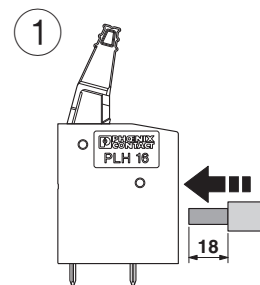
No. of positions: 5

Conductor cross section: 16 mm²

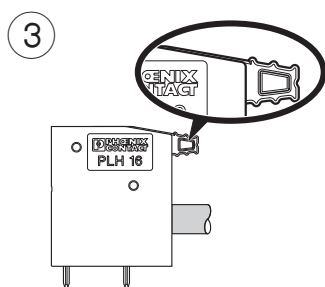
Drilling diagram



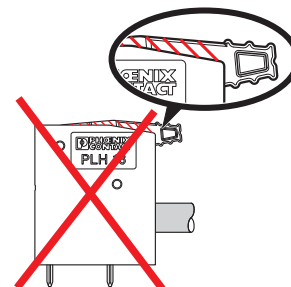
Functional drawing



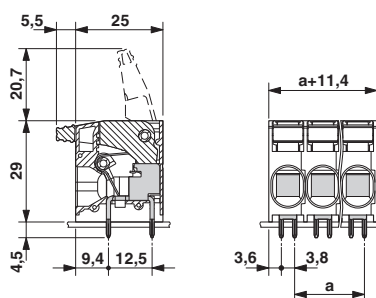
Functional drawing



Functional drawing



Dimensional drawing



<https://www.phoenixcontact.com/cn/products/1770393>



PCB terminal block - PLH 16/ 2-10 - 1770393

Approvals


Approvals


Approvals


UL Recognized / IEC EE CB Scheme / VDE Zeichengenehmigung / EAC


Ex Approvals

Approval details

UL Recognized		http://database.ul.com/cgi-bin/XYV/template/LISEXT/1FRAME/index.htm	FILE E 60425
	B	C	D
mm ² /AWG/kcmil	18-6	18-6	18-6
Nominal current I _N	51 A	51 A	10 A
Nominal voltage U _N	300 V	150 V	300 V

IECEE CB Scheme		http://www.iecee.org/	DE1-54990
mm ² /AWG/kcmil	0.75-16		
Nominal current I _N	76 A		
Nominal voltage U _N	400 V		

VDE Zeichengenehmigung		http://www.vde.com/en/Institute/OnlineService/VDE-approved-products/Pages/Online-Search.aspx	40041250
mm ² /AWG/kcmil	0.75-16		
Nominal current I _N	76 A		
Nominal voltage U _N	400 V		

EAC		B.01742
-----	---	---------