

HSF

NOTES:
 Current Rating:0.5AMP
 Contact Resistance:30mΩ max
 Withstand Voltage:100V AC/DC
 Insulation Resistance:500MΩ min
 Operation Temperature:-40°C to +125°C

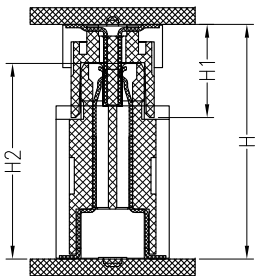
Contact Material:Phosphor Bronze
 Cap Material:SUS,t=0.25mm
 Housing Material:LCP(UL94V-0),Nature
 Contact plating:Au and Tin over Ni

Flatness: <80Pins The "M" Is 0.12mm MAX
 ≥80Pins The "M" Is 0.15mm MAX

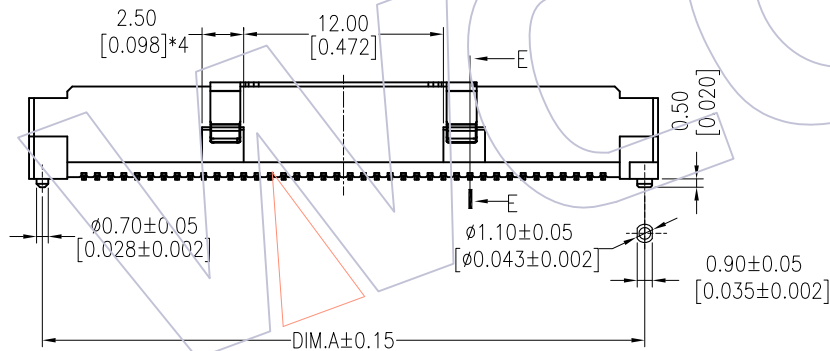
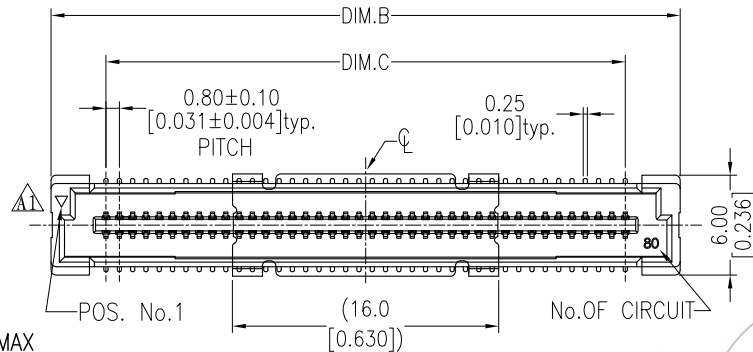
Ordering Information

3616-P XXX - XXX XX R 01

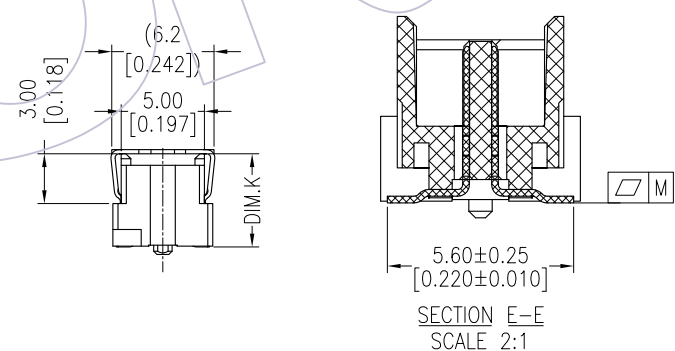
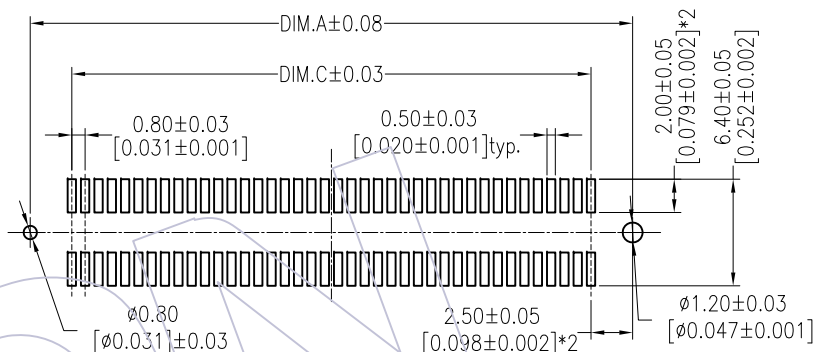
No.of Pins Housing High Contact Plating R=Tape&Reel+CAP
 Male=H1 S1=3u"Gold/Tin S2=5u"Gold/Tin



Assembly



Recommended P.C.B Layout (Top Side)
 (PCB BOARD TOLERANCE ± 0.05)



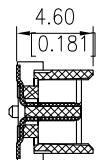
| PART NO. | DIM.K (MALE HEIGHT) | ASS'Y HEIGHT (H) | PLUG (H1) | SOCKET (H2) | ASS'Y HEIGHT (H) | PLUG (H1) | SOCKET (H2) | ASS'Y HEIGHT (H) | PLUG (H1) | SOCKET (H2) |
|--------------------|---------------------|------------------|-----------|-------------|------------------|-----------|-------------|------------------|-----------|-------------|
| 3616-PXXX-046XXR01 | 4.60 | 5.00 | 4.60 | 3.75 | 9.00 | 4.60 | 7.75 | 13.00 | 4.60 | 11.75 |
| 3616-PXXX-056XXR01 | 5.60 | 6.00 | 5.60 | | 10.00 | 5.60 | | 14.00 | 5.60 | |
| 3616-PXXX-066XXR01 | 6.60 | 7.00 | 6.60 | 3.75 | 11.00 | 6.60 | 7.75 | 15.00 | 6.60 | 11.75 |
| 3616-PXXX-076XXR01 | 7.60 | 8.00 | 7.60 | | 12.00 | 7.60 | | 16.00 | 7.60 | |

| DIM.C | DIM.B | DIM.A | PIN NO. |
|-------|-------|-------|---------|
| 79.20 | 85.80 | 84.20 | 200 |
| 71.20 | 77.80 | 76.20 | 180 |
| 63.20 | 69.80 | 68.20 | 160 |
| 55.20 | 61.80 | 60.20 | 140 |
| 47.20 | 53.80 | 52.20 | 120 |
| 39.20 | 45.80 | 44.20 | 100 |
| 31.20 | 37.80 | 36.20 | 80 |
| 23.20 | 29.80 | 28.20 | 60 |
| 15.20 | 21.80 | 20.20 | 40 |

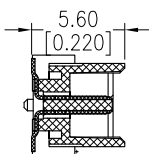
| REV | DATE | MODIFICATION DESCRIPTION | CHANGE | OPERATION | DRAW | DATE | SCALE | FIT | PART NO. |
|-----|------------|--------------------------|--------|-------------|---------|------------|-------|--------------|------------------------|
| A2 | 2014/11/07 | Modify | △ | X.X ±0.40 | Allen | 2014/11/07 | mm | | 3616-PXXX-XXXXXR01 |
| A1 | 2014/08/21 | Modify | △ | X.XX ±0.25 | CHECK | DATE | inch | | |
| A0 | 2013/04/22 | NEW | — | X.XXX ±0.15 | APPROVE | DATE | A4 | | |
| | | | | Angle ± 3° | | | SHEET | 1/2 | TITLE: 0.80mm B TO B |
| | | | | DIM TOL | | | PROJ. | Customer NO. | "T" MALE 180° SMT TYPE |

HSF

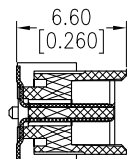
PLUG



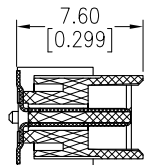
3616-PXXX-046XXR01



3616-PXXX-056XXR01

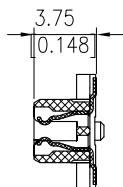


3616-PXXX-066XXR01

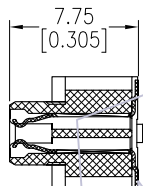


3616-PXXX-076XXR01

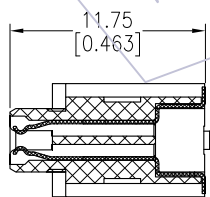
RECEPTACLE



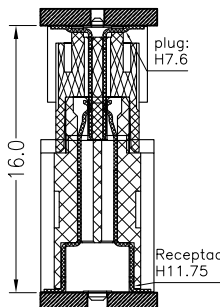
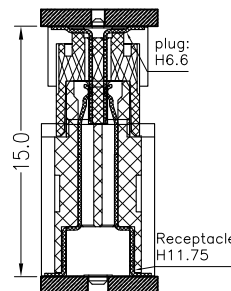
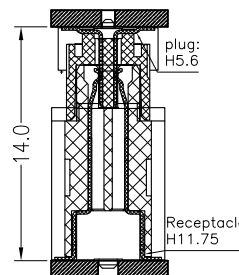
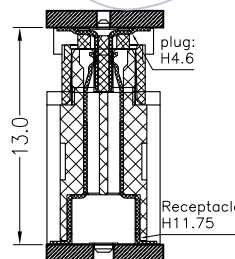
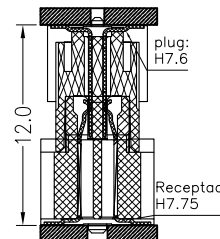
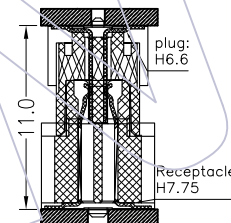
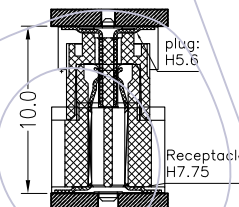
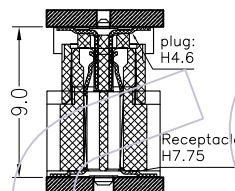
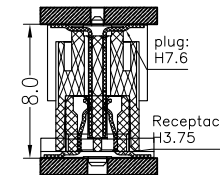
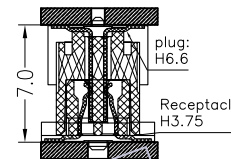
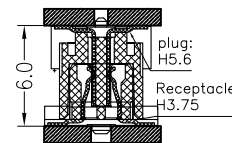
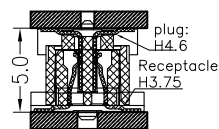
3616-SXXX-037XXR01



3616-SXXX-077XXR01



3616-SXXX-117XXR01



| REV | DATE | MODIFICATION DESCRIPTION | CHANGE | OPERATION | DRAW | DATE | SCALE | FIT | PART NO. |
|-----|------------|--------------------------|--------|-------------|---------|------------|-------|--------|------------------------|
| A2 | 2014/11/07 | Modify | | X.X ±0.40 | Allen | 2014/11/07 | UNIT | mm | 3616-PXXX-XXXXXR01 |
| A1 | 2014/08/21 | Modify | | X.XX ±0.25 | CHECK | DATE | inch | TITLE: | |
| A0 | 2013/04/22 | NEW | | X.XXX ±0.15 | APPROVE | DATE | SIZE | A4 | 0.80mm B TO B |
| | | | | Angle ± 3' | | | SHEET | 2/2 | "T" MALE 180° SMT TYPE |
| | | | | DIM TOL | | | PROJ. | | Customer NO. |