

HSF

Recommended P.C.B Layout (Top Side)
(PCB BOARD TOLERANCE ± 0.05)

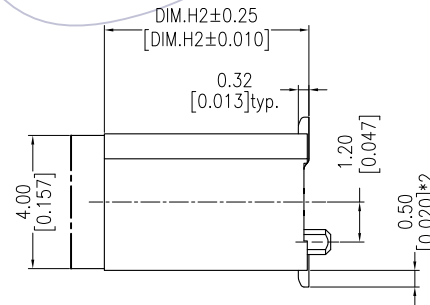
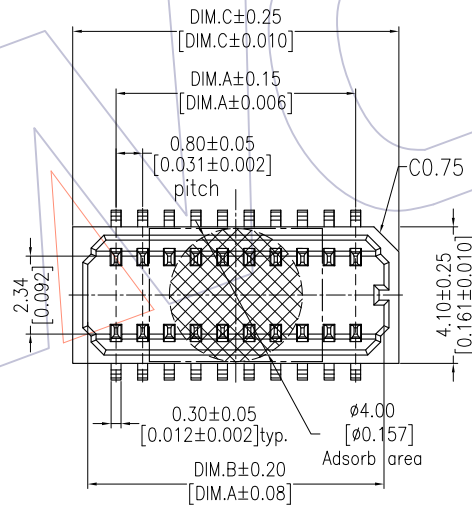
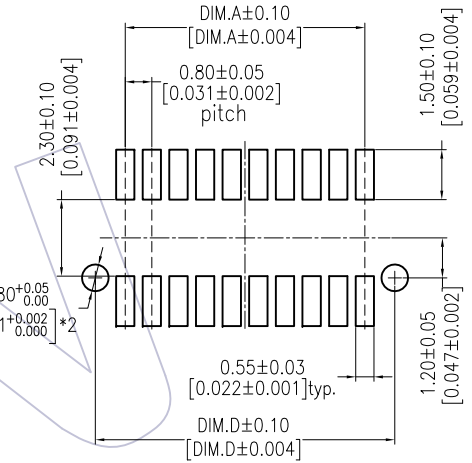
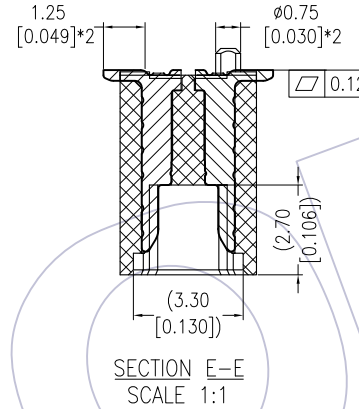
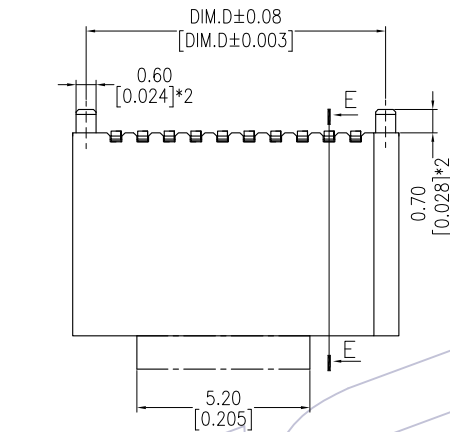
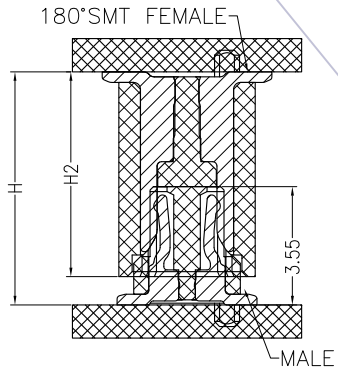
NOTES:
Current Rating:0.5AMP
Contact Resistance:30mΩ max
Withstand Voltage:500V AC/DC
Insulation Resistance:100MΩ min
Operation Temperature:-20°C to +105°C

Contact Material:Phosphor Bronze
Housing Material:PA9T(UL94V-0)
Contact plating:Au or Sn over Ni

Ordering Information

3612-S XXX - XXX XX R 01

No.of Pins Housing High Female=H2 Contact Plating
G1=3u"Gold T=Tube R=Tube+CAP
G2=5u"Gold P=Tube+CAP R=Tape&Reel+CAP
S1=3u"Gold/Tin S2=5u"Gold/Tin



PART NO.	FEMALE(H2)
3612-SXXX-036XXR01	3.65
3612-SXXX-041XXR01	4.15
3612-SXXX-047XXR01	4.70
3612-SXXX-051XXR01	5.15
3612-SXXX-056XXR01	5.65
3612-SXXX-061XXR01	6.15

17.00	17.80	16.90	15.20	40
16.20	17.00	16.10	14.40	38
15.40	16.20	15.30	13.60	36
14.60	15.40	14.50	12.80	34
13.80	14.60	13.70	12.00	32
13.00	13.80	12.90	11.20	30
12.20	13.00	12.10	10.40	28
11.40	12.20	11.30	9.60	26
10.60	11.40	10.50	8.80	24
9.80	10.60	9.70	8.00	22
9.00	9.80	8.90	7.20	20
8.20	9.00	8.10	6.40	18
7.40	8.20	7.30	5.60	16
6.60	7.40	6.50	4.80	14
5.80	6.60	5.70	4.00	12
5.00	5.80	4.90	3.20	10
DIM.D	DIM.C	DIM.B	DIM.A	PIN NO.

ASS'Y HEIGHT(H)	FEMALE(H2)	MALE(H1)
4.50	3.65	3.55
5.00	4.15	
5.65	4.70	
6.00	5.15	
6.50	5.65	
7.00	6.15	

REV	DATE	MODIFICATION DESCRIPTION	CHANGE	OPERATION	DRAW	DATE	SCALE	FIT	PART NO.
				X.X ±0.40	Tsingnsn	2013/05/02	UNIT	mm	3612-SXXX-XXXXXR01
				X.XX ±0.25	CHECK	DATE	SIZE	inch	
A1	2013/05/02	Modify	△	X.XXX ±0.15			SHEET	1/1	TITLE:
A0	2013/03/22	NEW	—	Angle ± 3'	APPROVE	DATE	PROJ.	Customer NO.	0.80mm B TO B
				DIM TOL					"M" FEMALE 180° SMT TYPE