

# HSF

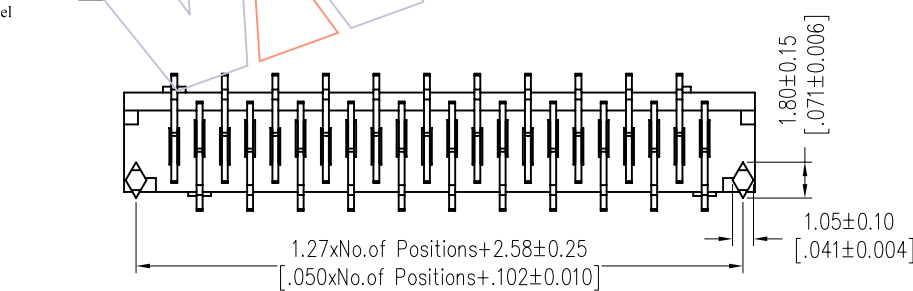
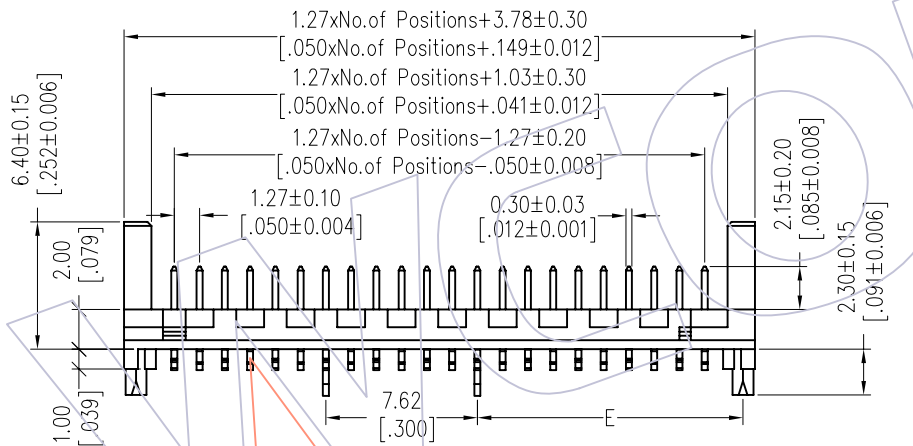
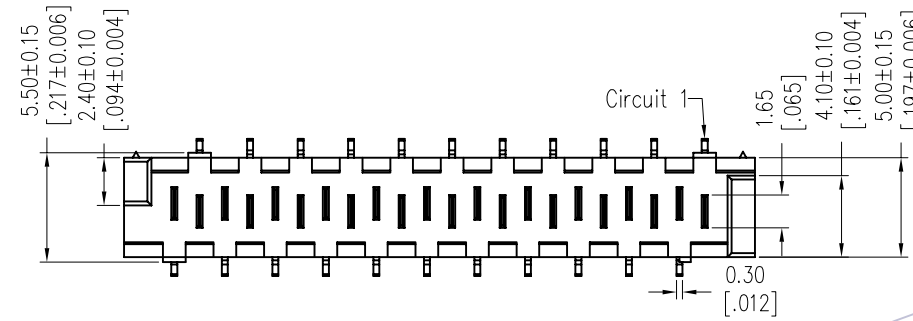
NOTES:  
 Current Rating: 1.0AMP  
 Contact Resistance: 20mΩ Max  
 Withstand Voltage: 500V AC/DC  
 Insulation Resistance: 1000MΩ Min  
 Operation Temperature: -40°C to +105°C

Contact Material: Phosphor Bronze  
 Contact plating: Sn over Ni  
 Insulator Material: LCP+30%G.F UL94V-0

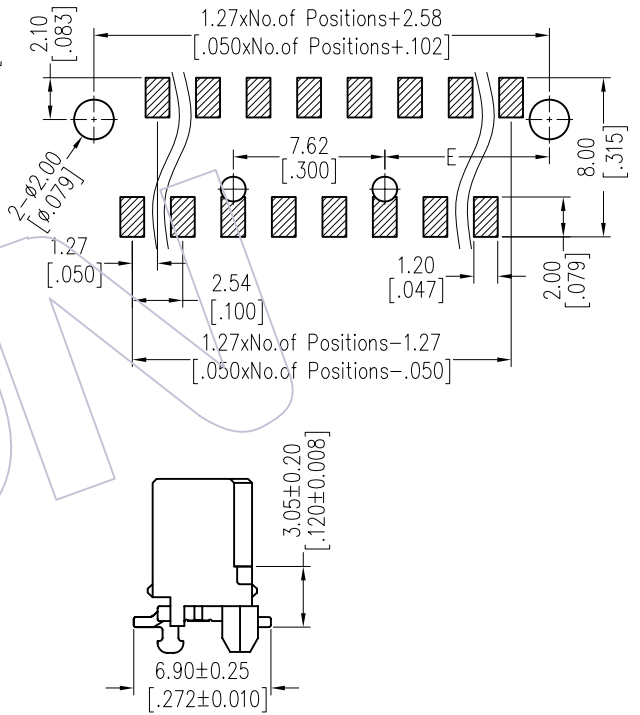
## Ordering Information

3901-XX MM XX D W B X 2

No. of Pins	Contact Plating	Insulator	Color	Packing
14 22	SM=Matte Tin	D=LCP	B=Black	T=Tube
16 24	SN=Tin			R=Tape&Reel
18 26				
20				



Recommended P.C.B Layout (Top Side)  
 (PCB BOARD TOLERANCE  $\pm 0.05$ )



Circuit	E
14P	10.82
16P	
18P	
20P	
22P	13.36
24P	
26P	

REV	DATE	MODIFICATION DESCRIPTION	CHANGE	OPERATION	DRAW	DATE	SCALE	FIT	PART NO.
A0	2012/11/01	NEW	-----	x.x ±0.40	JYHuang	2012/11/01	UNIT	mm	3901-XXMMXXDWBX2
				x.xx ±0.25	CHECK	DATE	SIZE	A4	TITLE:
				x.xxx ±0.15	APPROVE	DATE	SHEET	1/1	1.27mm Picoflex Header SMT
				Angle ± 3'			PROJ.	Customer NO.	With Peg and hook
				DIM TOL					