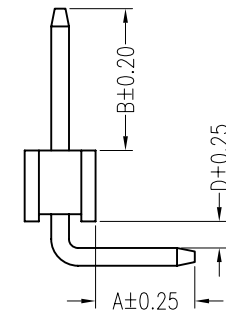
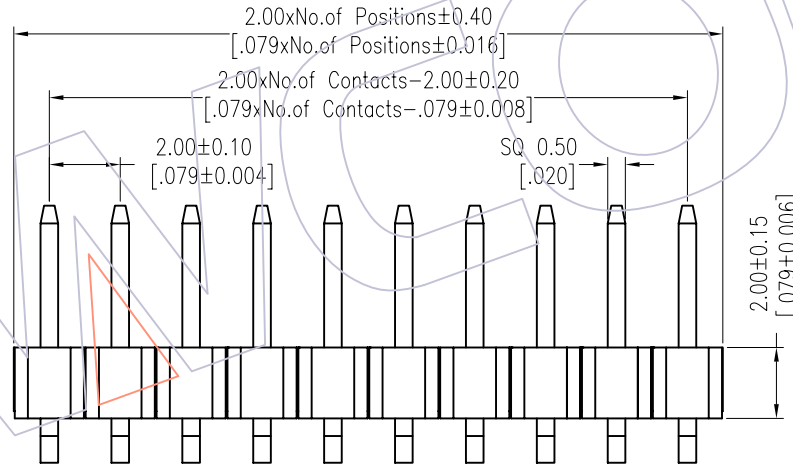
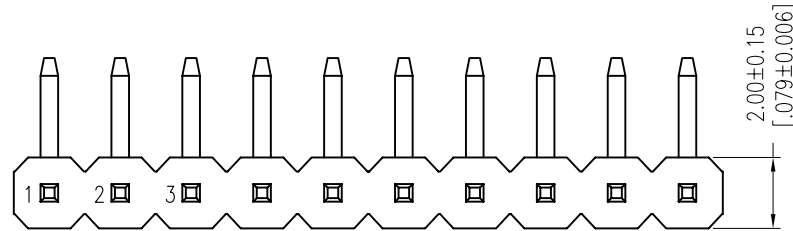
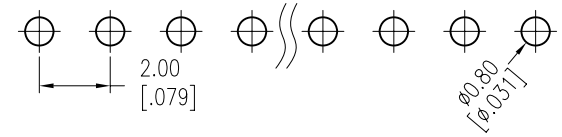


# HSF

NOTES:  
 Rated Current:2.0AMP.  
 Contact Resistance:20mΩ Max.  
 Withstand Voltage:500V AC/DC  
 Insulation Resistance:1000MΩ Min.  
 Operation Temperature:-40°C to +105°C

Contact Material:Brass  
 Contact Plating:Au or Sn Over Ni  
 Insulator Material:PA9T+30%G.F UL94V-0 BK

Recommended P.C.B Layout (Top Side)  
 (PCB BOARD TOLERANCE±0.05)



## Ordering Information

1220-11 XX XX R XXX X 1

No. of Pins    Contact Plating    Pin Length    Packing  
 02~40    G0=Gold Flash    L=A+B+D+3.0    0=PE Bag  
           G3=10u"Gold    Standard:105=10.5    T=Tube  
           G4=15u"Gold  
           G5=30u"Gold  
 S0=Gold Flash/Tin  
 S3=10u"Gold/Tin  
 S4=15u"Gold/Tin  
 S5=30u"Gold/Tin

Item	Pin Length	A	D	B	Mating
Standard	10.50	2.80	0.75	4.00	2240 2243 2263 2272
Alternate					

REV	DATE	MODIFICATION DESCRIPTION	CHANGE	OPERATION	DRAW	DATE	SCALE	Fit	PART NO.
				X.X ±0.40	William Chen	2012.04.26	UNIT	mm	1220-11XXXXRXXXXX
				X.XX ±0.25	CHECK	DATE	SIZE	A4	TITLE:
				X.XXX ±0.15	APPROVE	DATE	SHEET	1/1	PH2.00 SINGLE ROW 90° CONCAVE BENDING H=2.0
				Angle ± 3'			PROJ.	⊕	Customer NO.
				DIM TOL					

# WCON

Http: www.wcon.com

WCON-Dongguan    WCON-Kunshan  
 Tel: +86 769 85358920    Tel: +86 512 57468408  
 Fax: +86 769 85358915    Fax: +86 512 57468468  
 E-mail: sales@wcon.com    E-mail: salesks@wcon.com