

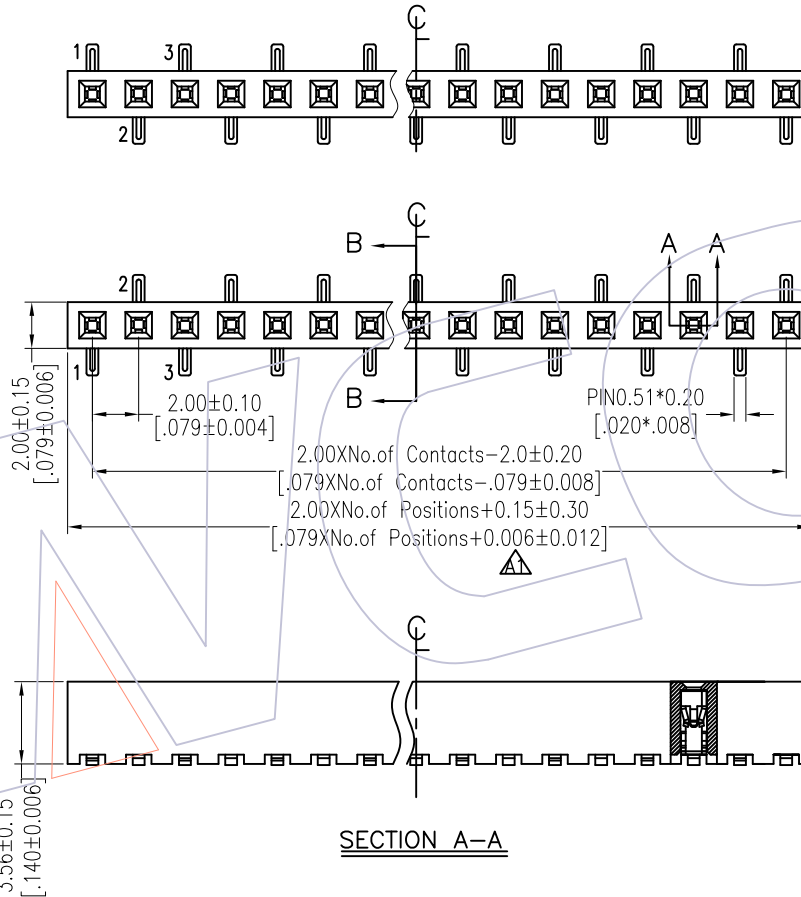
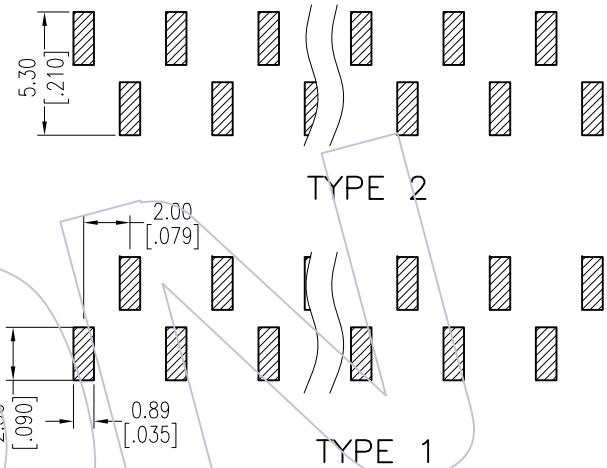
# HSF

**NOTES:**

Current Rating: 2.0AMP  
 Contact Resistance: 20mΩ Max  
 Withstand Voltage: 500V AC/DC  
 Insulation Resistance: 1000MΩ Min  
 Operation Temperature: -40°C to +105°C

Contact Material: Phosphor Bronze  
 Contact plating: Au Or Sn over Ni  
 Insulator Material: PA9T+30%GF UL94V-0

Recommended P.C.B Layout(Top Side)  
 (PCB BOARD TOLERANCE±0.05)

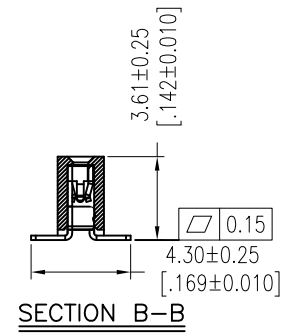


## Ordering Information

2235-1 XX M XX CUN T X

- No. of Pins per Row: 02-40Pin
- Contact Plating:  
 G0=Gold Flash  
 G3=10μ"Gold  
 G4=15μ"Gold  
 G5=30μ"Gold  
 S0=Gold Flash/Tin  
 S3=10μ"Gold/Tin  
 S4=15μ"Gold/Tin  
 S5=30μ"Gold/Tin  
 SN=Tin  
 SM=Matte Tin
- Packing:  
 T=Tube  
 P=Tube+CAP  
 R=Tape&Reel+CAP
- Series No.  
 1=Type 1  
 2=Type 2

2.00XNo. of Contacts-2.0±0.20  
 [.079XNo. of Contacts-.079±0.008]  
 2.00XNo. of Positions+0.15±0.30  
 [.079XNo. of Positions+0.006±0.012]



| Item      | Pitch | Mating    |
|-----------|-------|-----------|
| Standard  | 2.00  | 1215/1220 |
| Alternate |       |           |

| TITLE  | PART NO.         |
|--------|------------------|
| TYPE 1 | 2235-1XXMXXCUNT1 |
| TYPE 2 | 2235-1XXMXXCUNT2 |

| REV | DATE       | MODIFICATION DESCRIPTION | CHANGE | OPERATION |       | DRAW<br>Wang | DATE<br>2013/06/21 | SCALE<br>UNIT | FIT<br>mm    | PART NO.<br>SEE TABLE                                 |
|-----|------------|--------------------------|--------|-----------|-------|--------------|--------------------|---------------|--------------|---|
|     |            |                          |        | X.X       | ±0.40 |              |                    |               |              |   |
| A1  | 2013/06/21 | Modify drawing           | -----  | X.XX      | ±0.25 | CHECK        | DATE               | SIZE          | A4           | TITLE:<br>FH2.0mm SINGLE ROW 180° SMT<br>H=3.56 W=2.0 |
| A0  | 2012/07/12 | NEW                      | -----  | X.XXX     | ±0.15 | APPROVE      | DATE               | SHEET         | 1/1          |   |
| REV | DATE       | MODIFICATION DESCRIPTION | CHANGE | Angle     | ± 3'  |              | DATE               | PROJ.         | Customer NO. |   |