

HSF

NOTES:
 Current Rating: 2.0AMP
 Contact Resistance: 20mΩ Max
 Withstand Voltage: 500V AC/DC
 Insulation Resistance: 1000MΩ Min
 Operation Temperature: -40°C to +105°C

Contact Material: Phosphor Bronze
 Contact plating: Au Or Sn over Ni
 Insulator Material: PA9T+30%GF UL94V-0

Ordering Information

2243-2 XX W XX CUN X X

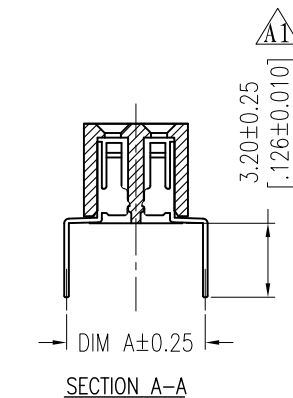
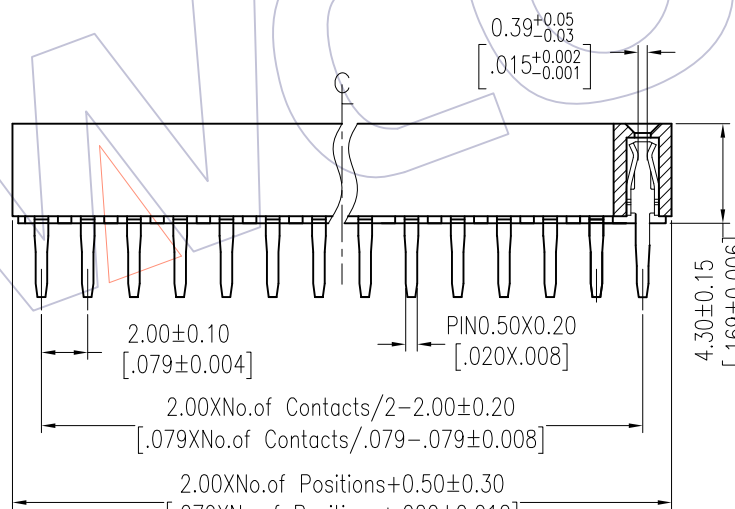
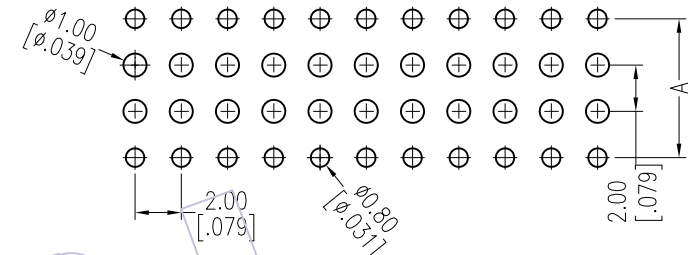
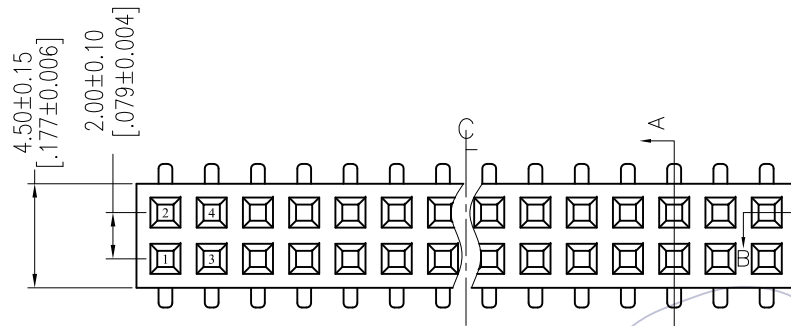
No. of Pins per Row: 02-40Pin

Contact Plating:
 G0=Gold Flash
 G3=10μ"Gold
 G4=15μ"Gold
 G5=30μ"Gold
 S0=Gold Flash/Tin
 S3=10μ"Gold/Tin
 S4=15μ"Gold/Tin
 S5=30μ"Gold/Tin
 SN=Tin
 SM=Matte Tin

Packing:
 T=Tube
 A=Tray

Series No.:
 1=TYPE 1
 2=TYPE 2

Recommended P.C.B Layout (Top Side)
 (PCB BOARD TOLERANCE ±0.05)



Item	Pitch	Mating
Standard	2.00	1215/1220
Alternate		

TITLE	DIM A	PART NO.
TYPE 1	6.00	2243-2XXWXXCUNX1
TYPE 2	5.00	2243-2XXWXXCUNX2

REV	DATE	MODIFICATION DESCRIPTION	CHANGE	OPERATION	DRAW	DATE	SCALE	FIT	PART NO.
A1	2015/09/14	Modify 3.00 to 3.20	A1	x.x ±0.40	Allen	2015/09/14	UNIT	mm	2243-2XXWXXCUNXX
AO	2012/07/14	NEW	-----	x.xx ±0.25	CHECK	DATE	SIZE	A4	
				x.xxx ±0.15	APPROVE	DATE	SHEET	1/1	
				Angle ± 3'			PROJ.	Customer NO.	
				DIM TOL					