

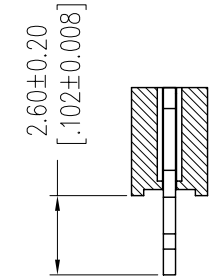
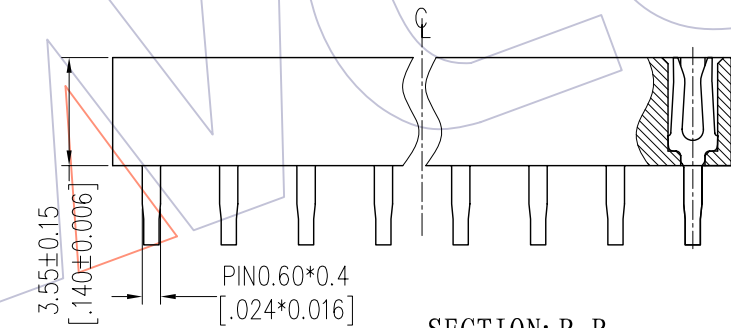
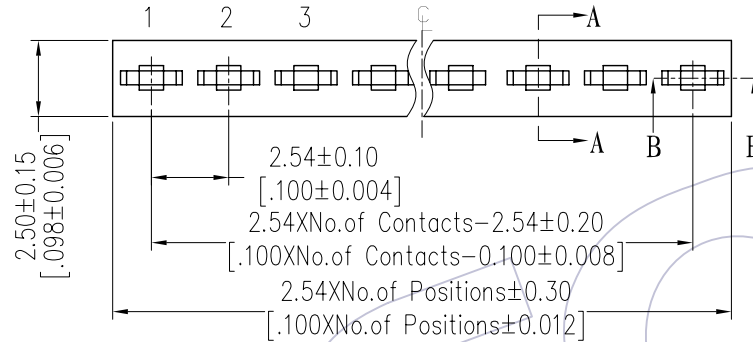
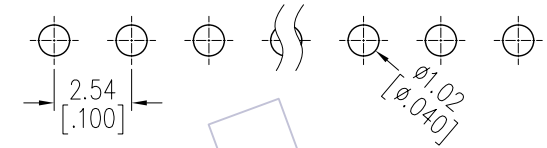
# HSF

**NOTES:**

Current Rating: 3.0AMP  
 Contact Resistance: 20mΩ Max  
 Withstand Voltage: 1000V AC/DC  
 Insulation Resistance: 1000MΩ Min  
 Operation Temperature: -40°C to +105°C

Contact Material: Phosphor Bronze  
 Contact plating: Au Or Sn over Ni  
 Insulator Material: PA9T+30%GF UL94V-0

Recommended P.C.B Layout(Top Side)  
 (PCB BOARD TOLERANCE±0.05)



**SECTION: B-B**

**SECTION: A-A**

## Ordering Information

2135T - 1 XX S XX XYNT 1

- No. of Pins per ROW: 02-40PIN
- Contact Plating: G0=Gold Flash, G3=10μ"Gold, G4=15μ"Gold, G5=30μ"Gold, S0=Gold Flash/Tin, S3=10μ"Gold/Tin, S4=15μ"Gold/Tin, S5=30μ"Gold/Tin, SN=Tin, SM=Matte Tin
- Insulator: A=PBT, C=PA9T
- Packing: T=Tube

Item	Pitch	Mating
Standard	2.54	1115/1120/1125
Alternate		

REV	DATE	MODIFICATION DESCRIPTION	CHANGE	OPERATION	DRAW	DATE	SCALE	FIT	PART NO.
				X.X ±0.40	JYHuang	2012/08/02	UNIT	mm	2135T-1XXSXXXNT1
				X.XX ±0.25	CHECK	DATE	SIZE	A4	TITLE: FH2.54 SINGLE ROW 180° DIP H=3.5
				X.XXX ±0.15			SHEET	1/1	
AO	2012/08/02	NEW	-----	Angle ± 3°	APPROVE	DATE	PROJ.	⊕	Customer NO.
				DIM TOL					