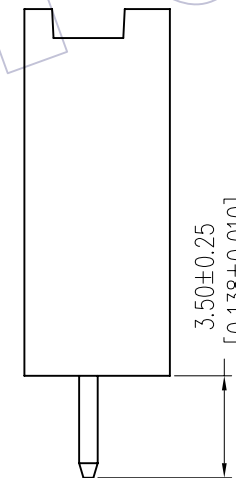
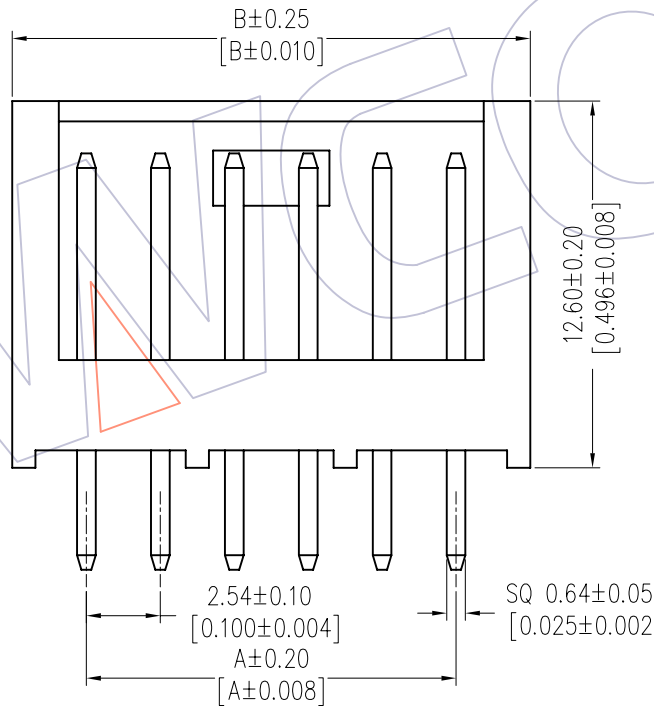
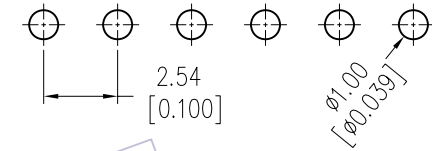
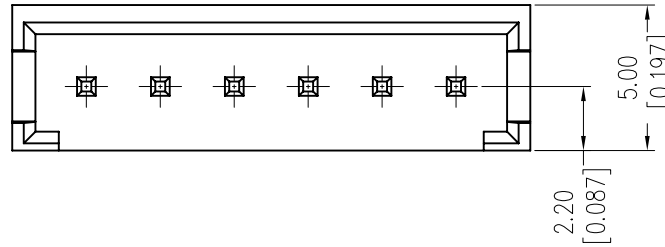


# HSF

NOTES:  
 Rated Current: 3.0A  
 Rated Voltage: 250V AC/DC  
 Contact Resistance: 20mΩ max  
 Withstand Voltage: 1000V AC/Minute  
 Insulation Resistance: 1000MΩ min  
 Operation Temperature: -25°C to +85°C

Contact Material: Brass  
 Contact plating: Au Or Sn Over Ni  
 Insulator Material: PBT+30G.F (UL94V-0)

Recommended P.C.B Layout(Top Side)  
 (PCB BOARD TOLERANCE ±0.05)



Circuit	Dimension	
	A	B
1x02	2.54	7.70
1x04	7.62	12.70
1x06	12.70	17.80
1x08	17.78	22.90
1x09	20.32	25.40
1x10	22.86	28.00
1x12	27.94	33.10
1x15	35.56	40.70
1x22	53.34	58.50

## Ordering Information

WF2548 -1 WS XX X 0 1

No. of Row Single Row  
 No. of pins See List  
 Contact Plating  
 S0=Gold Flash/Tin  
 S3=10u"Gold/Tin  
 S4=15u"Gold/Tin  
 S5=30u"Gold/Tin  
 G0=Gold Flash  
 G3=10u"Gold  
 G4=15u"Gold  
 G5=30u"Gold  
 Blank=Tin  
 Color  
 B=Black  
 E=Beige  
 W=White  
 Packing  
 0=PE Bag  
 T=Tube

REV	DATE	MODIFICATION DESCRIPTION	CHANGE	OPERATION		DRAW	DATE	SCALE	FIT	PART NO.
				X.X	±0.40					
				X.XX	±0.25	CHECK	DATE	SIZE	A4	SEE TAB
				X.XXX	±0.15	APPROVE	DATE	SHEET	1/1	TITLE: 2.54 SINGLE ROW 180° DIP WAFER
A0	2012/09/08	NEW		Angle	± 3'			PROJ.	⊕	Customer NO.
				DIM	TOL					