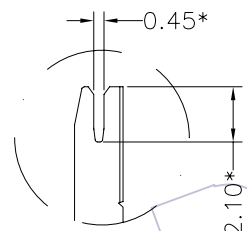
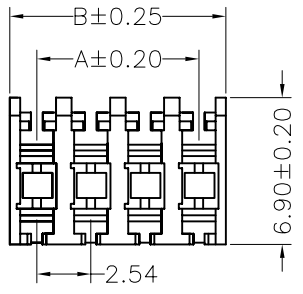


HSF

NOTES:
 Current Rating:2.5AMP
 Voltage Rating:250V AC,DC
 Contact Resistance:20mΩ Max
 Withstand Voltage:1000V AC/DC
 Insulation Resistance:1000MΩ Min
 Operation Temperature:-25°C to +85°C

Contact Material:Brass
 Contact Plating:Tin Plated or IeFlash
 Insulator Material:PA66+30%GF(UL94V-0/2)

Colour	AWG
White	#24
Green	#28
Red	#22
Yellow	#22
Blue	#26
Black	#24



IDC TYPE 2:1

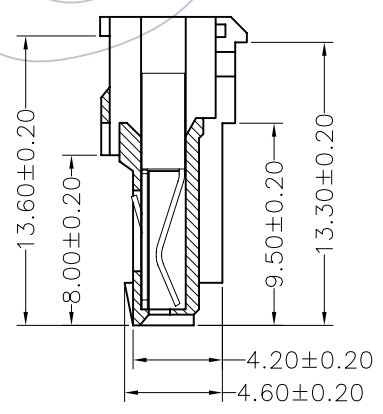
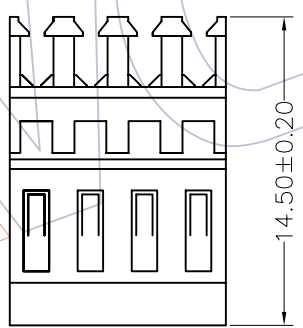
Dimensional & Ordering Information

Circuit	Part No.	Dimension	
		A	B
02	WF2545-H02X01	2.54	5.08
03	WF2545-H03X01	5.08	7.62
04	WF2545-H04X01	7.62	10.16
05	WF2545-H05X01	10.16	12.70
06	WF2545-H06X01	12.70	15.24
07	WF2545-H07X01	15.24	17.78
08	WF2545-H08X01	17.78	20.32
09	WF2545-H09X01	20.32	22.86
10	WF2545-H10X01	22.86	25.40
11	WF2545-H11X01	25.40	27.94
12	WF2545-H12X01	27.94	30.48
13	WF2545-H13X01	30.48	33.02
14	WF2545-H14X01	33.02	35.56
15	WF2545-H15X01	35.56	38.10
16	WF2545-H16X01	38.10	40.64
17	WF2545-H17X01	40.64	43.18

Ordering Information

WF2545-H XX X 01

No. of Pins: 02P-17P
 Color: W= White, B= Black, R= Red, E= Beige
 Packing: 0=PE Bag



						OPERATION	DRAW	WEIXD	08/07/23	SCALE	3:1	
						X.X ±0.40	DESIGN			UNIT	mm	
						X.XX ±0.25				SIZE	A4	
						X.XXX ±0.15		CHECK			SHEET	1/1
AO	08/07/23		NEW			Angle ± 3'	APPROVE			PROJ.	⌀	
REV	DATE		MODIFICATION DESCRIPTION	CHANGE	APPROVE	DIM TOL						