

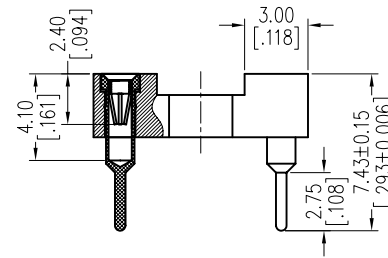
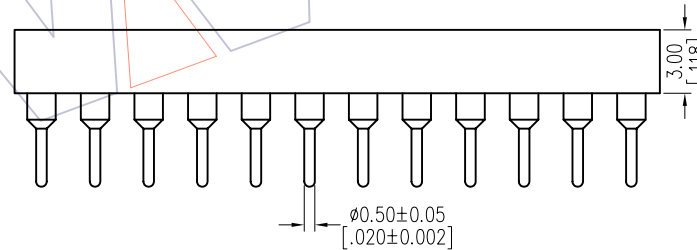
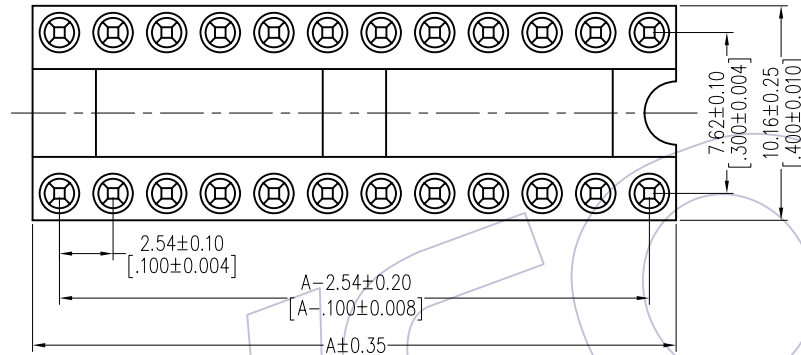
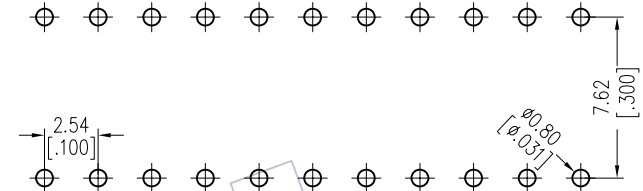
# HSF

## TECHNICAL SPECS:

Current Rating: 1.0AMP  
 Contact Resistance: 10m Ω Max  
 Dielectric Strength: Min 1000VRMS  
 Mechanical Life: Min 100 cycles  
 Mating Pin:  $\phi 0.40$  to  $\phi 0.56$ mm  
 Forces: (polished steel gauge  $\phi 0.43$ mm)  
 Insertion: 200g Max/Pin, Withdrawal: 60g Min/Pin  
 Operation Temperature:  $-40^{\circ}\text{C}$  to  $+105^{\circ}\text{C}$

Sleeve: Brass CuZn36Pb3(C36000), Sn over Ni  
 Contact Clip(4 finger): BeCu(C17200), Au or Sn over Ni  
 Insulator Material: PPS+30%G.F(UL94V-0)  
 06P~18P Insulators without center bar  
 20P~28P Insulators with center one bar

Recommended P.C.B Layout(Top Side)  
 (PCB BOARD TOLERANCE  $\pm 0.05$ )



## Ordering Information

7110-301 XX S XX 074 X 1

Row of Pitch 1=7.62mm  
 No. of Pin See tab  
 Contact Plating S0=Gold Flash/Tin S3=10u"Gold/Tin S4=15u"Gold/Tin S5=30u"Gold/Tin SN=Tin  
 Packing T=Tube A=Tray

Dimensional & Ordering Information

NO. of Poles	Part No.	Dim
		A
06	7110-30106SXX074X1	7.62
08	7110-30108SXX074X1	10.16
10	7110-30110SXX074X1	12.70
14	7110-30114SXX074X1	17.78
16	7110-30116SXX074X1	20.32
18	7110-30118SXX074X1	22.86
20	7110-30120SXX074X1	25.40
22	7110-30122SXX074X1	27.94
24	7110-30124SXX074X1	30.48
28	7110-30128SXX074X1	35.56

REV	DATE	MODIFICATION DESCRIPTION	CHANGE	OPERATION	DRAW	DATE	SCALE	FIT	PART NO.
				x.x ±0.40	JYHuang	2012/11/02	UNIT	mm	SEE TAB
				x.xx ±0.25	CHECK	DATE	SIZE	A4	TITLE:
				x.xxx ±0.15	APPROVE	DATE	SHEET	1/1	2.54mm IC SOCKET 180° H=3.0 L=7.43
				Angle ± 3°			PROJ.	Customer NO.	
				DIM	TOL				