

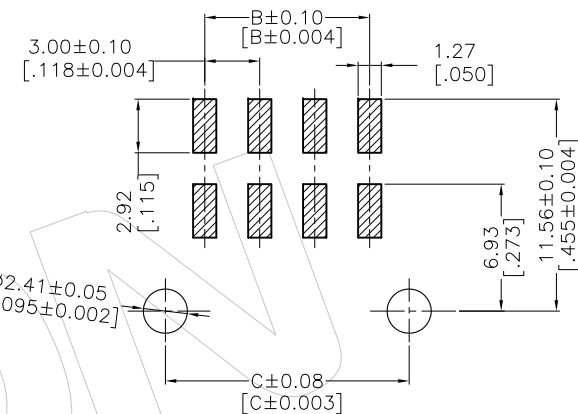
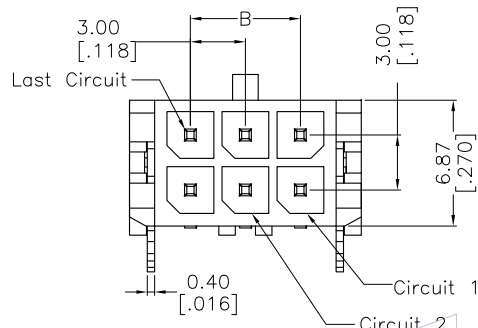
# HSF

**NOTES:**

Current Rating:5.0A AMP  
 Contact Resistance:10milliohm Max  
 Withstand Voltage:1000V AC/Minute  
 Insulation Resistance:1000Megohm Min  
 Operation Temperature:-25°C to +85°C

Housing Material:LCP+30%GF(UL94V-0)  
 Contact Material:Copper alloy  
 Contact plating:Au/Sn over Ni Plating

RECOMMENDED PCB LAYOUT  
 TOLERANCE IS ±0.05



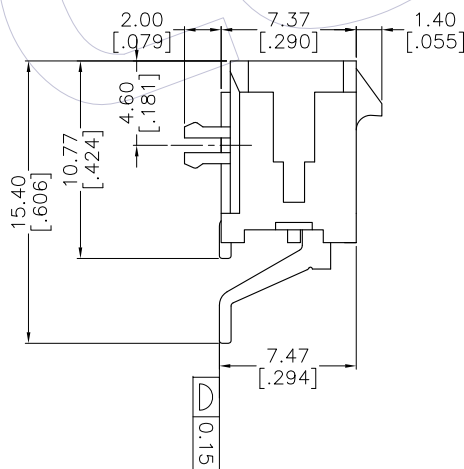
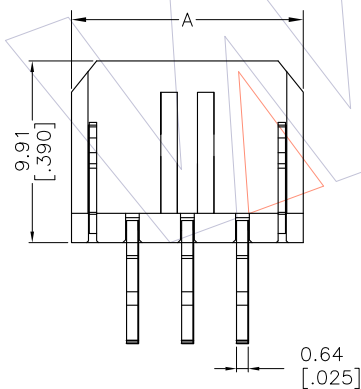
## Ordering Information

WF3001-2 WZ XX B X 2

Terminal shape:  
 WZ:Wafer 90° SMT

NO.of Pins Per  
 Row:01~12Pin

Packing:  
 0=PE Bag  
 T=Tube  
 A=Tray  
 R=Tape&Reel



| Circuit | A            | B            | C            |
|---------|--------------|--------------|--------------|
| 02      | 6.65[0.262]  | NA           | 4.30[0.169]  |
| 04      | 9.65[0.380]  | 3.00[0.118]  | 7.30[0.287]  |
| 06      | 12.65[0.498] | 6.00[0.236]  | 10.30[0.405] |
| 08      | 15.65[0.616] | 9.00[0.355]  | 13.30[0.524] |
| 10      | 18.65[0.735] | 12.00[0.473] | 16.30[0.642] |
| 12      | 21.65[0.853] | 15.00[0.591] | 19.30[0.760] |
| 14      | 24.65[0.971] | 18.00[0.709] | 22.30[0.878] |
| 16      | 27.65[1.089] | 21.00[0.827] | 25.30[0.996] |
| 18      | 30.65[1.207] | 24.00[0.945] | 28.30[1.114] |
| 20      | 33.65[1.325] | 27.00[1.063] | 31.30[1.232] |
| 22      | 36.65[1.443] | 30.00[1.181] | 34.30[1.350] |
| 24      | 39.65[1.561] | 33.00[1.299] | 37.30[1.469] |

| REV | DATE       | MODIFICATION DESCRIPTION              | CHANGE | OPERATION   | DRAW    | DATE       | SCALE        | PART NO.                                     |
|-----|------------|---------------------------------------|--------|-------------|---------|------------|--------------|--|
| A1  | 2012.05.03 | 料号由WF3001-2WZHXXBX2变更为WF3001-2WZXXBX2 | Atomy  | X.X ±0.40   | FZY     | 2012.05.03 | 1:1          | △ WF3001-2WZXXBX2                            |
| A0  | 2011.12.20 | NEW                                   | -      | X.XX ±0.25  | CHECK   | DATE       | UNIT mm inch | TITLE: 3.00 WAFER DUAL ROW 90° SMT WITH CLIP |
|     |            |                                       |        | X.XXX ±0.15 | APPROVE | DATE       | SIZE A4      | Customer NO.                                 |
|     |            |                                       |        | Angle ± 3'  |         |            | SHEET 1/1    |  |
|     |            |                                       |        | DIM TOL     |         |            | PROJ.        |  |