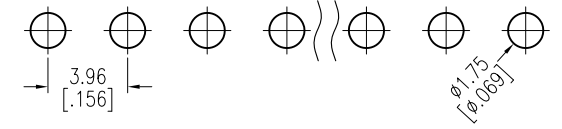
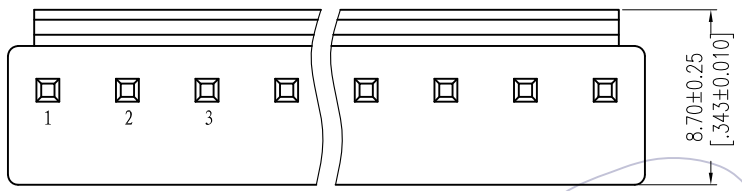


# HSF

Recommended P.C.B Layout(Top Side)  
(PCB BOARD TOLERANCE±0.05)



NOTES:  
 Current Rating:7.0AMP  
 Contact Resistance:20mΩ Max  
 Withstand Voltage:1000V AC/DC  
 Insulation Resistance:1000MΩ Min  
 Operation Temperature:-40°C to +105°C

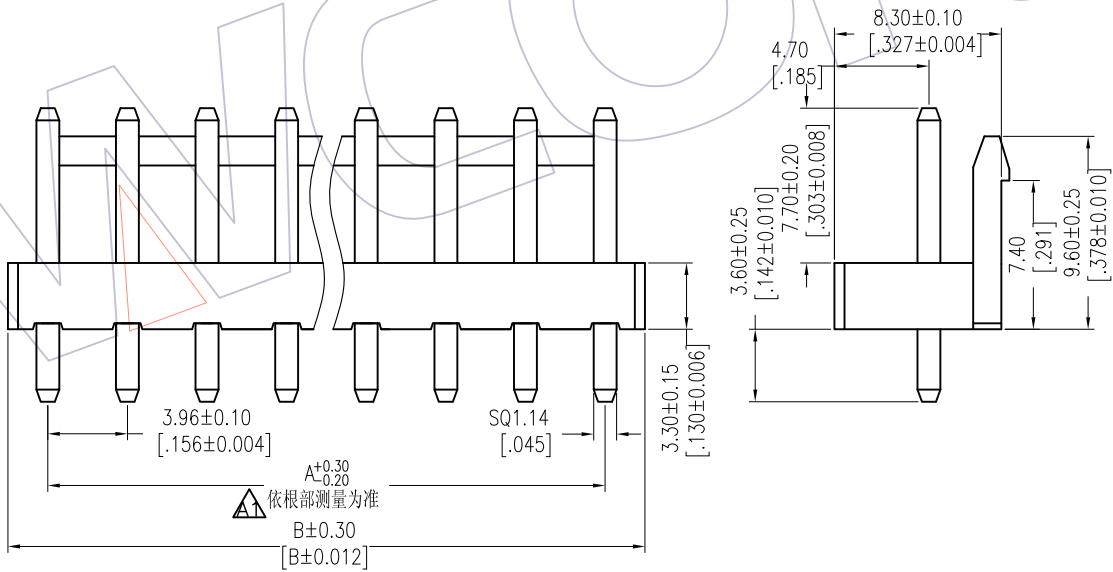
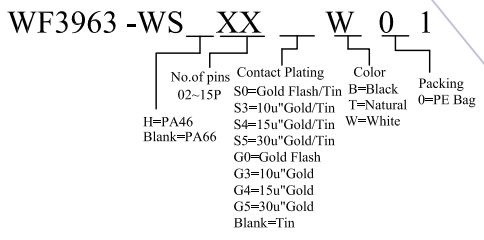


Contact Material:Brass  
 Contact plating:Au Or Sn Over Ni  
 Insulator Material:PA66 Or PA46 UL94V-0

Specification & Ordering Information:

Circuit	Part No.	Dimension		Q'ty /Bag
		A	B	
02	WF3963-WS02X01	3.96	7.92	700
03	WF3963-WS03X01	7.92	11.88	600
04	WF3963-WS04X01	11.88	15.84	450
05	WF3963-WS05X01	15.84	19.80	350
06	WF3963-WS06X01	19.80	23.76	300
07	WF3963-WS07X01	23.76	27.72	250
08	WF3963-WS08X01	27.72	31.68	200
09	WF3963-WS09X01	31.68	35.64	180
10	WF3963-WS10X01	35.64	39.60	150
11	WF3963-WS11X01	39.60	43.56	120
12	WF3963-WS12X01	43.56	47.52	90
13	WF3963-WS13X01	47.52	51.48	70
14	WF3963-WS14X01	51.48	55.44	50
15	WF3963-WS15X01	55.44	59.40	30
16	WF3963-WS16X01	59.40	63.36	30
17	WF3963-WS17X01	63.36	67.32	20
18	WF3963-WS18X01	67.32	71.28	20
19	WF3963-WS19X01	71.28	75.24	20
20	WF3963-WS20X01	75.24	79.20	20

## Ordering Information



△ 依根部测量为准  
 A<sup>+0.30</sup>/<sub>-0.20</sub>  
 B±0.30 [B±0.012]

REV	DATE	MODIFICATION DESCRIPTION	CHANGE	OPERATION		DRAW JYHuang	DATE 2013/06/26	SCALE	FIT	PART NO. WF3963-WSXXX01
				X.X	±0.40					
A1	2013/06/26	MODIFY THE DIM		X.XX	±0.25	CHECK	DATE	UNIT	mm	TITLE: VH 3.96 Wafer 180°
AO	2012/09/17	NEW		X.XXX	±0.15	APPROVE	DATE	SHEET	1/1	Customer NO.
				Angle	± 3'			PROJ.		
				DIM	TOL					