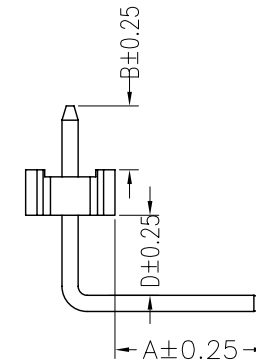
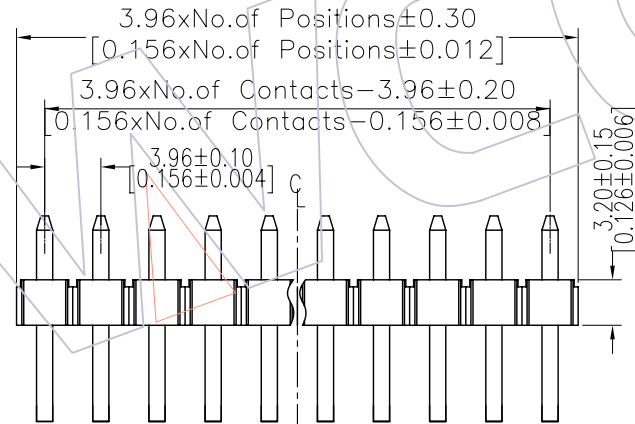
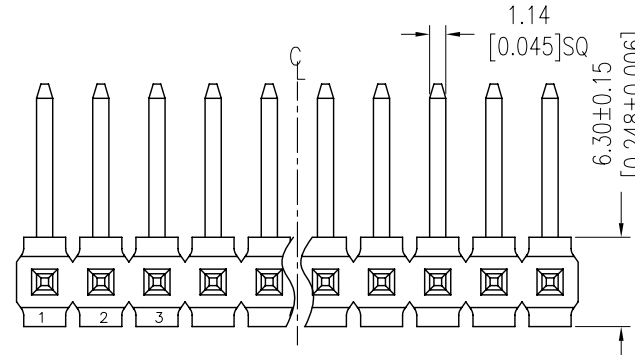
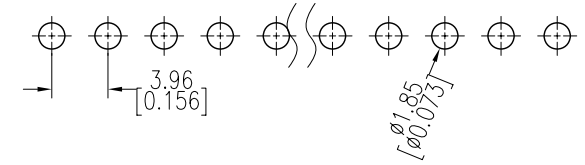


# HSF

NOTES:  
 Current Rating:7AMP  
 Contact Resistance:20mΩ max  
 Withstand Voltage:500V AC/DC  
 Insulation Resistance:1000MΩ min  
 Operation Temperature:-40℃ to +105℃

Contact Material:Brass  
 Contact plating:Au or Sn Over Ni  
 Insulator Material:Black  
 Insulator Material:High Temperature Thermoplastic(UL94V-0)

Recommended P.C.B Layout(Top Side)  
 (PCB BOARD TOLERANCE±0.05)



## Ordering Information

1832-1 1 XX XX R XXX X 1

|                            |   |                                    |                               |
|----------------------------|---|------------------------------------|-------------------------------|
| No. of Pins per Row: 01~20 | Contact Plating<br>G0=Gold Flash<br>G1=3u"Gold<br>G2=5u"Gold<br>G3=10u"Gold<br>G4=15u"Gold<br>G5=30u"Gold<br>S0=Gold Flash/Tin<br>S1=3u"Gold/Tin<br>S2=5u"Gold/Tin<br>S3=10u"Gold/Tin<br>S4=15u"Gold/Tin<br>S5=30u"Gold/Tin<br>SN=Tin | Pin length<br>L=A+B+D+3.15+3.2<br> | Packing<br>0=PE Bag<br>T=Tube |
|----------------------------|---|------------------------------------|-------------------------------|

| Dimension antitheses list |      |      |      |
|---------------------------|------|------|------|
| ITEM                      | A    | B    | D    |
| Standard                  | 10.8 | 4.50 | 5.65 |
| Alternate                 |      |      |      |

| REV | DATE     | MODIFICATION DESCRIPTION | CHANGE | APPROVE | OPERATION   | DRAW    | HDG | 11/04/22 | SCALE | 2:1 |
|-----|----------|--------------------------|--------|---------|-------------|---------|-----|----------|-------|-----|
| A1  | 11/04/22 | Change Body              |        |         | X.X ±0.40   | DESIGN  |     |          | UNIT  | mm  |
| A0  | 08/03/31 | NEW                      |        |         | X.XX ±0.25  | CHECK   |     |          | SIZE  | A4  |
|     |          |                          |        |         | X.XXX ±0.15 | APPROVE |     |          | SHEET |     |
|     |          |                          |        |         | Angle ± 3'  |         |     |          | PROJ. |     |
|     |          |                          |        |         | DIM TOL     |         |     |          |       |     |