

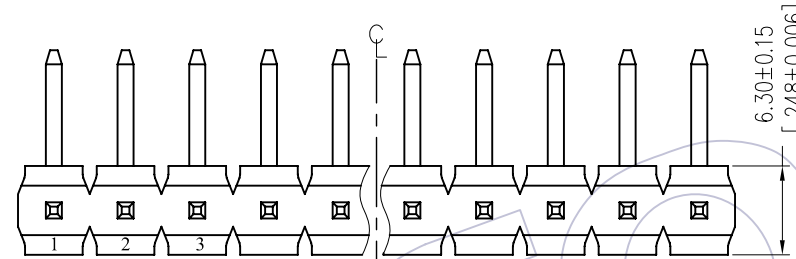
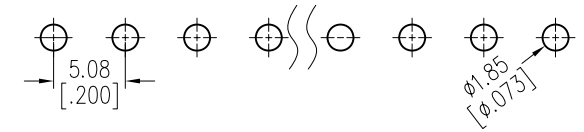
HSF

Recommended P.C.B Layout (Top Side)
(PCB BOARD TOLERANCE±0.05)

NOTES:

Rated Current: 7.0AMP.
Contact Resistance: 20mΩ Max.
Withstand Voltage: 1000V AC/DC
Insulation Resistance: 1000MΩ Min.
Operation Temperature: -40°C to +105°C

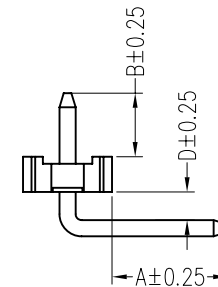
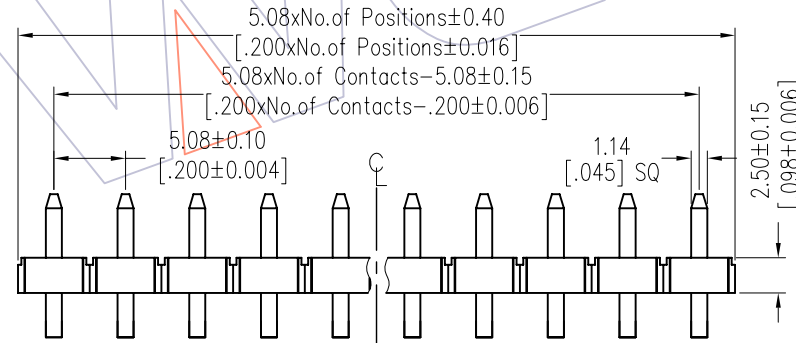
Contact Material: Brass
Contact Plating: Au Or Sn Over Ni
Insulator Material: LCP+30%G.F UL94V-0 BK



Ordering Information

1925-11 XX XX R XXX X 1

No. of Pins: 02~20
Contact Plating: G0=Gold Flash, SN=Tin
Pin Length: L=A+B+D+5.65, Standard: 191=19.1
Packing: 0=PE Bag



Item	Pin Length	A	B	C	D	Mating
Standard	19.15	8.00	3.50	---	2.00	2989
Alternate						

REV	DATE	MODIFICATION DESCRIPTION	CHANGE	OPERATION	DRAW	DATE	SCALE	FIT	PART NO.
				x.x ±0.40	JYHuang	2012.07.03	UNIT	mm	1925-11XXXXRXXXX
				x.xx ±0.25	CHECK	DATE	SIZE	A4	TITLE:
A0	2012/07/03	NEW	-----	x.xxx ±0.15	APPROVE	DATE	SHEET	1/1	PH5.08 SINGLE ROW 90° PLANE BENDING H=2.5
				Angle ± 3°			PROJ.	Customer NO.	
				DIM TOL					