

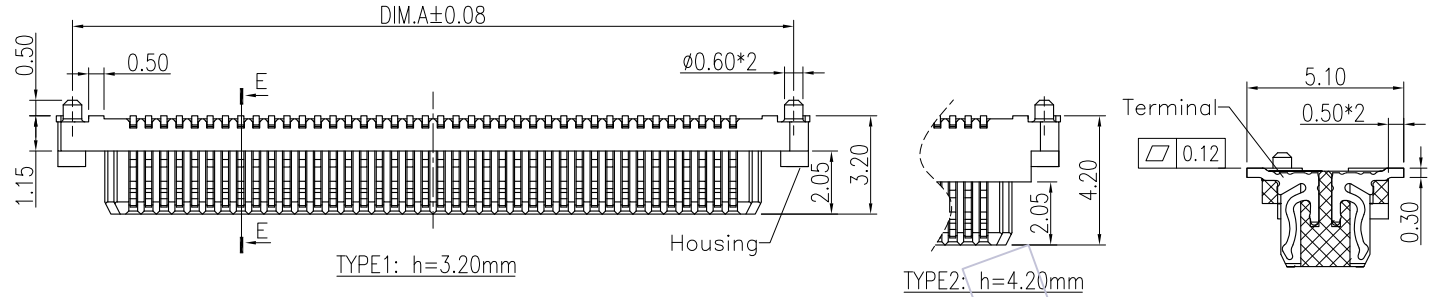
# HSF

**NOTES:**

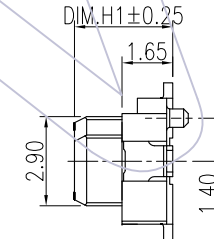
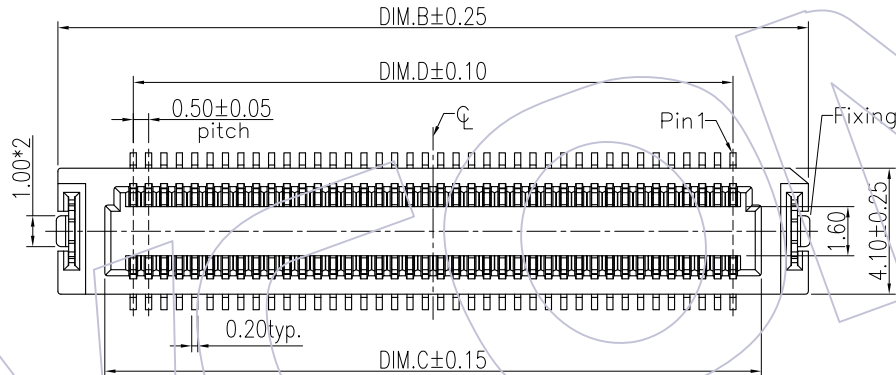
Current Rating:0.5AMP  
 Contact Resistance:35mΩ max  
 Withstand Voltage:500V AC for 1minute  
 Insulation Resistance:500MΩ min  
 Operation Temperature:-30°C to +105°C

Housing Material:PA9T(UL94V-O),Black  
 Contact Material:Copper alloy  
 Fixing Material:Copper alloy  
 Contact plating:Au over Ni  
 Fixing plating:Sn over Ni

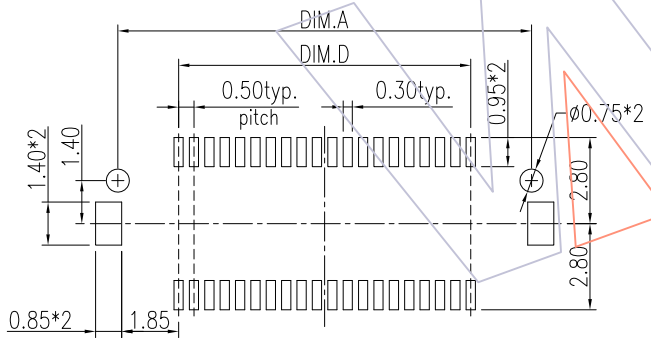
24.50	26.35	29.40	28.45	100
19.50	21.35	24.40	23.45	80
17.00	18.85	21.90	20.95	70
14.50	16.35	19.40	18.45	60
12.00	13.85	16.90	15.95	50
4.50	6.35	9.40	8.45	20
3.50	5.35	8.40	7.45	16
DIM.D	DIM.C	DIM.B	DIM.A	PIN NO.



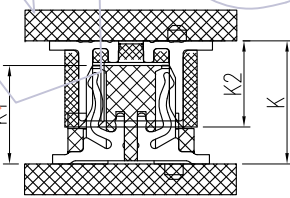
SECTION E-E  
SCALE 1:1



PART NO.	DIM.H1
3621-PXXX-032GXR01	3.20
3621-PXXX-042GXR01	4.20

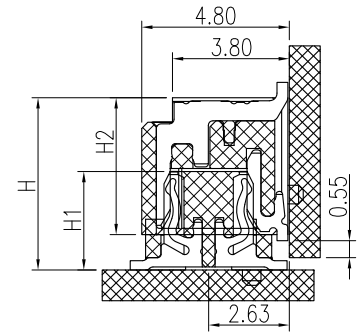


RECOMMENDED P.C. BOARD LAYOUT



MATED DRAWING(REF.)

ASS'Y HEIGHT(K)	PLUG(K1)	SOCKET(K2)
4.00		2.80
4.50	3.20	3.30
5.50		4.30
6.00		4.80
5.00	4.20	2.80
6.50		4.30
7.00		4.80



ASS'Y HEIGHT(H)	PLUG(H1)	SOCKET(H2)
5.60	3.20	
6.60	4.20	4.45

REV	DATE	MODIFICATION DESCRIPTION	CHANGE	OPERATION		DRAW	DATE	SCALE	1:1	PART NO.	TITLE:
				X.X	±0.40						
				X.XX	±0.25	Peng	2013.02.25	UNIT	mm	3621-PXXX-XXXGXR01	0.50pitch MALE BTB SMT TYPE (with Fixing) Customer NO.
				X.XXX	±0.15	CHECK	DATE	SIZE	A4		
A0	2013.02.25	NEW		Angle	± 3'	APPROVE	DATE	SHEET	1/1		
				DIM	TOL			PROJ.	⌀		