

# HSF

## TECHNICAL SPECS:

Current Rating:1.0AMP

Contact Resistance:10m  $\Omega$  Max

Dielectric Strength: Min 1000VRMS

Mechanical Life: Min 100 cycles

Mating Pin:  $\phi$ 0.40 to  $\phi$ 0.56mm

Forces: (polished steel gauge  $\phi$ 0.43mm)

Insertion: 200g Max/Pin, Withdrawal: 60g Min/Pin

Operation Temperature: -40°C to +105°C

Sleeve: Brass CuZn36Pb3(C36000), Sn over Ni

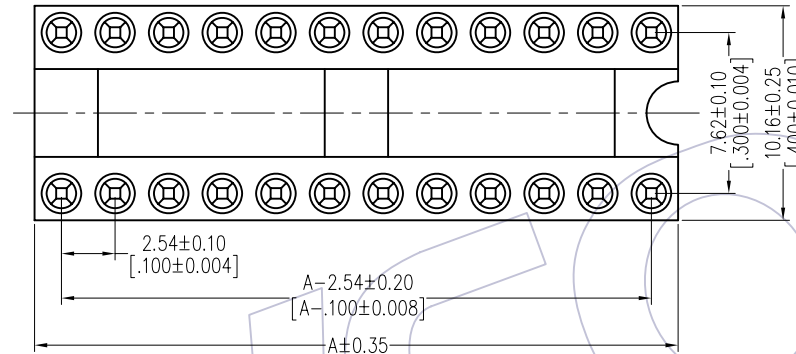
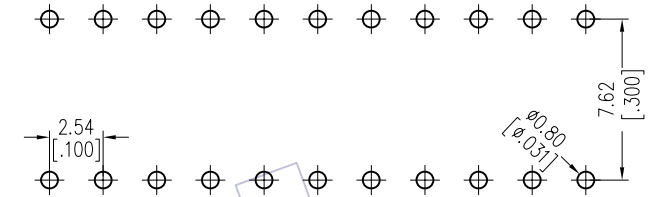
Contact Clip(4 finger): BeCu(C17200), Au or Sn over Ni

Insulator Material: PPS+30%G.F(UL94V-0)

06P~18P Insulators without center bar

20P~28P Insulators with center one bar

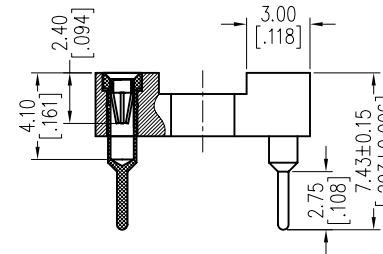
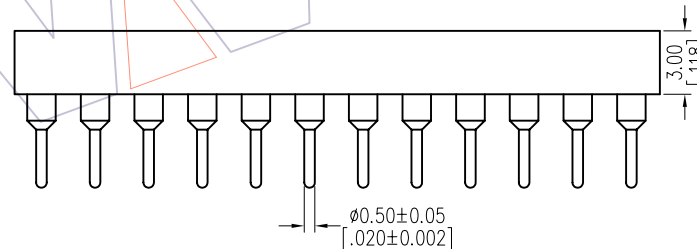
Recommended P.C.B Layout(Top Side)  
(PCB BOARD TOLERANCE  $\pm$ 0.05)



## Ordering Information

7110-301 XX S XX 074 X 1

Row of Pitch	No. of Pin	Contact Plating	Packing
1=7.62mm	See tab	S0=Gold Flash/Tin S3=10u"Gold/Tin S4=15u"Gold/Tin S5=30u"Gold/Tin SN=Tin	T=Tube A=Tray



Dimensional & Ordering Information

NO. of Poles	Part No.	Dim
		A
06	7110-30106SXX074X1	7.62
08	7110-30108SXX074X1	10.16
10	7110-30110SXX074X1	12.70
14	7110-30114SXX074X1	17.78
16	7110-30116SXX074X1	20.32
18	7110-30118SXX074X1	22.86
20	7110-30120SXX074X1	25.40
22	7110-30122SXX074X1	27.94
24	7110-30124SXX074X1	30.48
28	7110-30128SXX074X1	35.56

				OPERATION		DRAW JYHuang	DATE 2012/11/02	SCALE	FIT	PART NO. SEE TAB	
				X.X	±0.40			UNIT	mm		
				X.XX	±0.25	CHECK	DATE	SIZE	A4	TITLE:	
				X.XXX	±0.15					2.54mm IC SOCKET 180° H=3.0 L=7.43 Row of Pitch 7.62	
A0	2012/11/02	NEW	-----	Angle	± 3°	APPROVE	DATE	SHEET	1/1	Customer NO.	
REV	DATE	MODIFICATION DESCRIPTION	CHANGE	DIM	TOL			PROJ.	