

HSF

TECHNICAL SPECS:

Current Rating: 3.0AMP
 Contact Resistance: 10mΩ Max
 Dielectric Strength: Min 1000V_{RM}
 Mechanical Life: Min 500 cycles
 Mating Pin: $\varnothing 0.40$ to $\varnothing 0.66$ mm or 0.50SQ
 Forces: (polished steel gauge $\varnothing 0.47$ mm)
 Insertion: 200g Max/Pin, Withdrawal: 60g Min/Pin
 Operation Temperature: -40°C to $+105^{\circ}\text{C}$

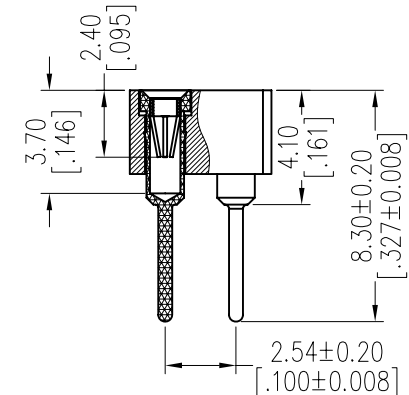
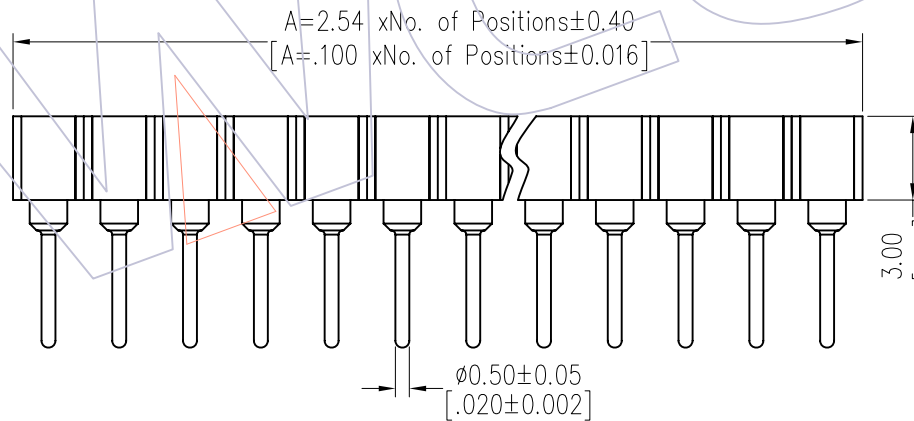
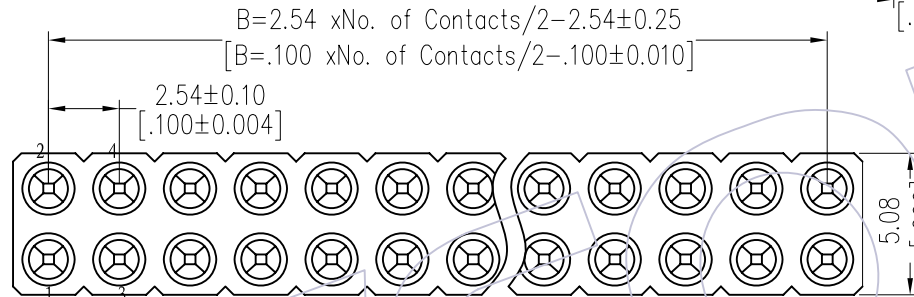
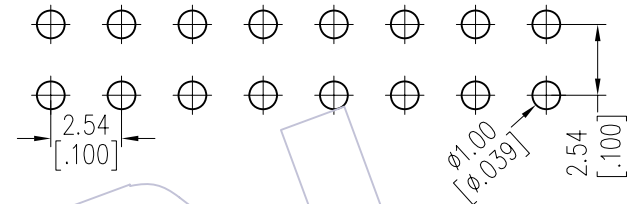
Sleeve: Brass CuZn36Pb3(C36000), Sn over Ni
 Contact Clip(4 finger): BeCu(C17200), Au or Sn over Ni
 Insulator Material: PPS+30%G.F(UL94V-0)

Ordering Information

3520-302 XX S XX 083 X 1

No. of Pin 2-50PIN
 Contact Plating
 S0=Gold Flash/Tin
 S3=10u"Gold/Tin
 S4=15u"Gold/Tin
 S5=30u"Gold/Tin
 SN=Tin
 Packing
 A=Tray
 T=Tube

Recommended P.C.B Layout(Top Side)
 (PCB BOARD TOLERANCE ± 0.05)



Item	Pitch	Mating
Standard	2.54	3510
Alternate		

REV	DATE	MODIFICATION DESCRIPTION	CHANGE	OPERATION	DRAW	DATE	SCALE	FIT	PART NO.
				x.x ± 0.40	JYHuang	2012/10/18	UNIT	mm	3520-302XXSXX083X1
				x.xx ± 0.25	CHECK	DATE	SIZE	A4	TITLE:
				x.xxx ± 0.15	APPROVE	DATE	SHEET	1/1	2.54mm MACHINED FEMALE HEADER DUAL ROW 180° H=3.00 L=8.3
				Angle ± 3'			PROJ.		Customer NO.
				DIM TOL					