

HSF

NOTES:
 Current Rating: 3.0AMP
 Contact Resistance: 25mΩ Max
 Withstand Voltage: 500V AC/Minute
 Insulation Resistance: 1000MΩ Min
 Operation Temperature: -55°C to +105°C

Contact Material: Brass
 Contact plating: Au Or Sn over Ni
 Insulator Material: PA66+30%G.F UL94V-0
 Shell: Cold Roller Steel, Ni Plated
 Revit/Harpoon: Brass, Sn Over Ni Plated

Print Date Code:

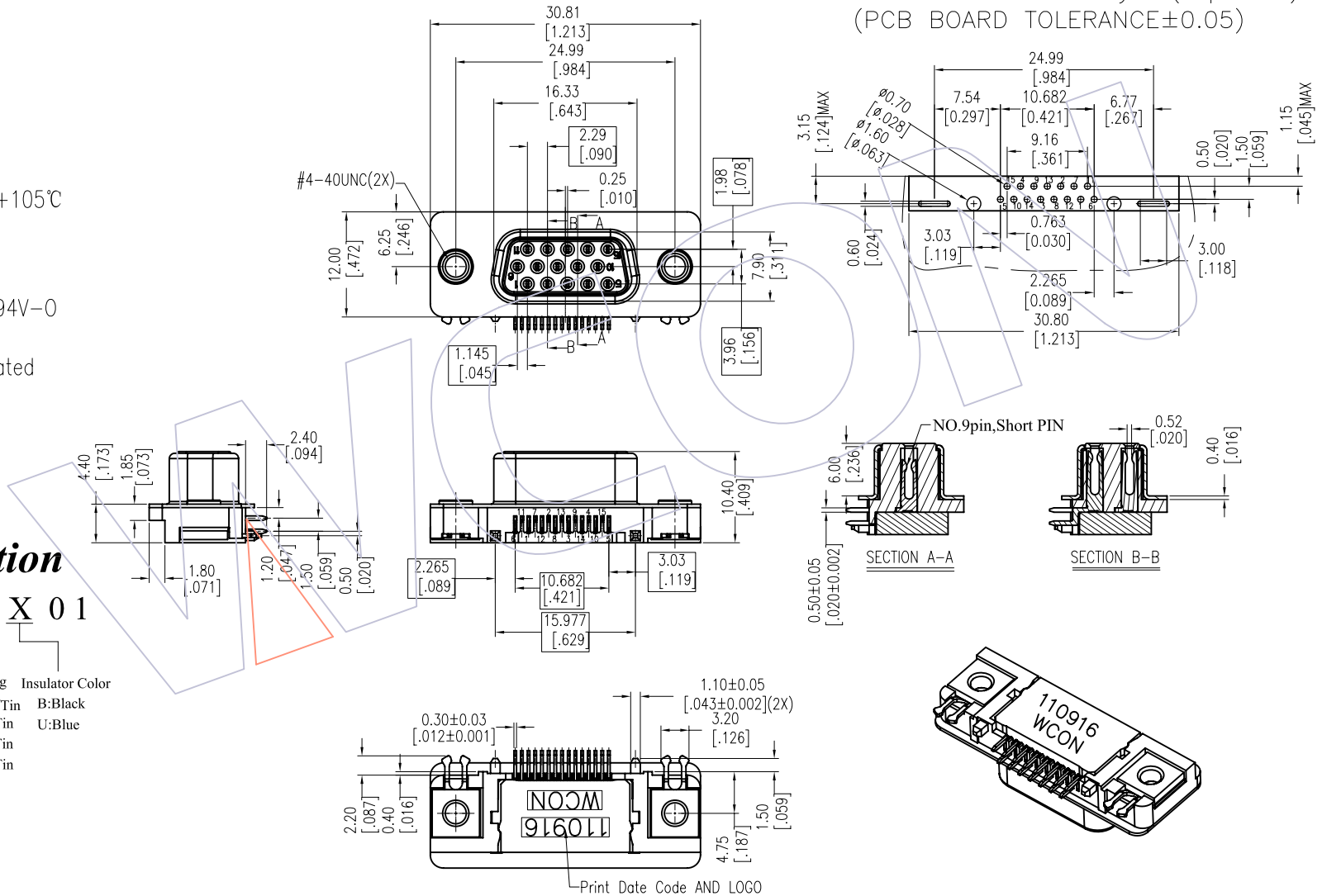
XX XX XX
 Year Month Date

Ordering Information

6215A-15 F M N XX X 0 1

| | | | |
|--------------------|---|---|--------------------------------------|
| No. of Pins 15P | Product Type M=With Revit Without Screw | Contact Plating S0=Gold Flash/Tin S3=10u"Gold/Tin S4=15u"Gold/Tin S5=30u"Gold/Tin SN=Tin | Insulator Color B:Black U:Blue |
|--------------------|---|---|--------------------------------------|

Recommended P.C.B Layout (Top Side)
 (PCB BOARD TOLERANCE ±0.05)



| | | | | | | | | | |
|-----|------------|--------------------------|--------|-------------|---------|------------|-------|-----|--|
| | | | | OPERATION | DRAW | DATE | SCALE | FIT | PART NO. |
| | | | | x.x ±0.40 | JYHuang | 2012/12/18 | UNIT | mm | 6215A-15FMNXXX01 |
| | | | | x.xx ±0.25 | CHECK | DATE | SIZE | A4 | TITLE: |
| | | | | x.xxx ±0.15 | APPROVE | DATE | SHEET | 1/1 | Slim HD/R 15P FEMALE, 90° DIP, Short 9PIN |
| AO | 2012/12/18 | NEW | ----- | Angle ± 3' | | | PROJ. | | Customer NO. |
| REV | DATE | MODIFICATION DESCRIPTION | CHANGE | DIM TOL | | | | | |