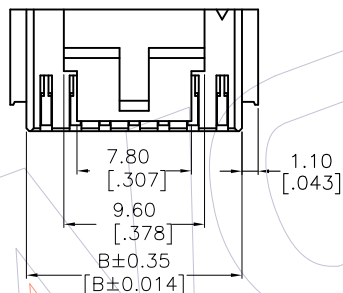
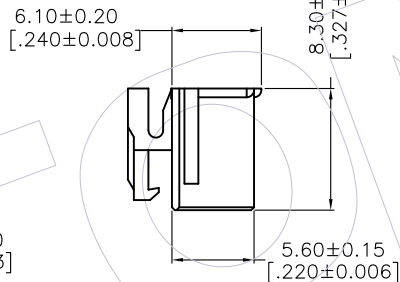
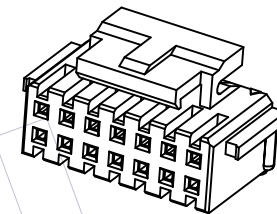
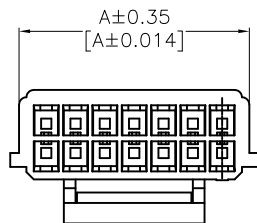


HSF

NOTES:
 Rated Current:3.0A
 Rated Voltage:250V AC/DC
 Contact Resistance:30milliohm Max
 Withstand Voltage:1000V AC/Minute
 Insulation Resistance:1000Megohm Min
 Operation Temperature:-25°C to +85°C

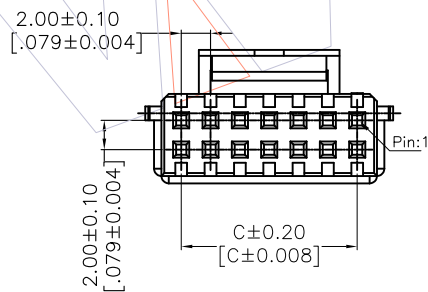
Housing Material:PA66 UL94V-0



Ordering Information

WF2005-2H XX W 0 1

No. of Pins per Row:14-40P Color: W=White Packing: 0=PE Bag



PIN	DIM.		
	A	B	C
2*7	15.70[0.618]	14.70[0.579]	12.00[0.473]
2*8	17.70[0.697]	16.70[0.657]	14.00[0.551]
2*9	19.70[0.776]	18.70[0.736]	16.00[0.630]
2*10	21.70[0.854]	20.70[0.815]	18.00[0.709]
2*11	23.70[0.933]	22.70[0.894]	20.00[0.788]
2*12	25.70[1.012]	24.70[0.972]	22.00[0.866]
2*13	27.70[1.091]	26.70[1.051]	24.00[0.945]
2*14	29.70[1.169]	28.70[1.130]	26.00[1.024]
2*15	31.70[1.248]	30.70[1.209]	28.00[1.103]
2*16	33.70[1.327]	32.70[1.287]	30.00[1.181]
2*17	35.70[1.406]	34.70[1.366]	32.00[1.260]
2*18	37.70[1.484]	36.70[1.445]	34.00[1.339]
2*19	39.70[1.563]	38.70[1.524]	36.00[1.418]
2*20	41.70[1.642]	40.70[1.602]	38.00[1.496]

				OPERATION		DRAW		DATE		SCALE		PART NO.	
				X.X	±0.40	Sam		2012.12.06		1:1		WF2005-2HXXW01	
				X.XX	±0.25	CHECK		DATE		mm inch		TITLE:	
				X.XXX	±0.15	APPROVE		DATE		A4		2.00mm Pitch WTB Housing	
				Angle	± 3'					SHEET		Customer NO.	
				DIM	TOL					1/1			
1	2012.12.06	NEW	-							PROJ.			
REV	DATE	MODIFICATION DESCRIPTION	CHANGE										