

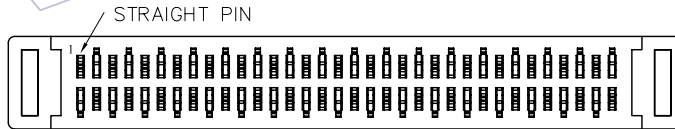
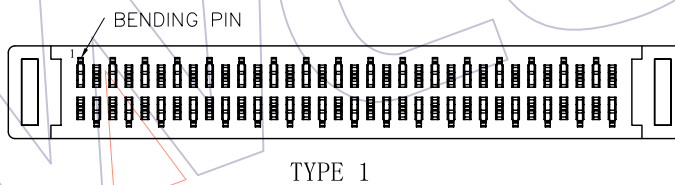
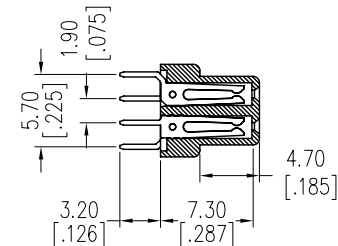
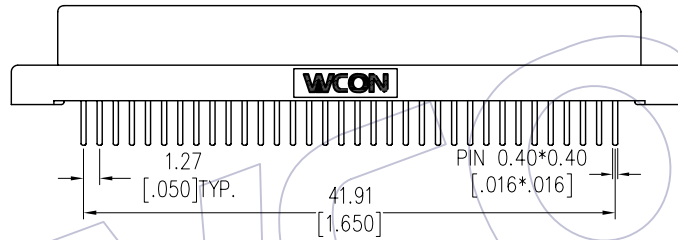
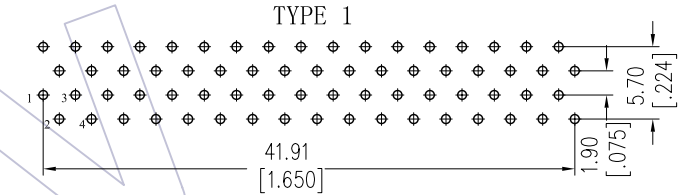
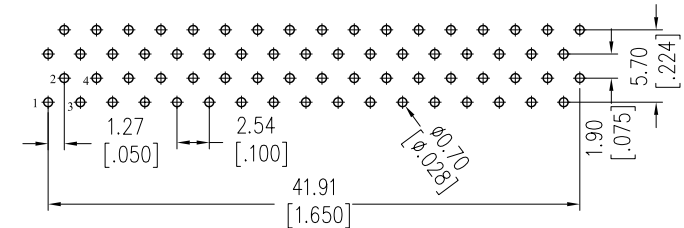
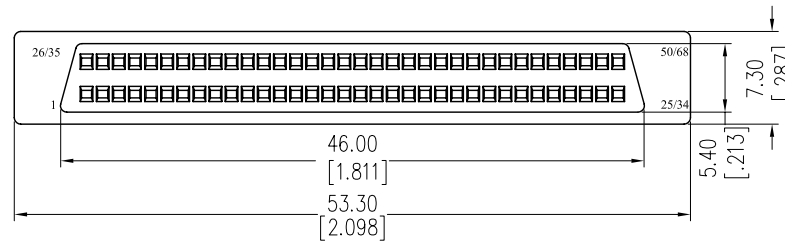
HSF

NOTES:

Current Rating: 1.0AMP
 Contact Resistance: 20mΩ Max
 Withstand Voltage: 500V AC/Minute
 Insulation Resistance: 1000MΩ Min
 Operation Temperature: -40°C to +105°C

Contact Material: Phosphor Bronze
 Contact plating: Au Or Sn over Ni
 Insulator Material: LCP+30%G.F UL94V-0

Recommended P.C.B Layout (Top Side)
 (PCB BOARD TOLERANCE ±0.05)



Ordering Information

6311 - 0XX X D XX P N X 01

No. of Pins per
 50=50PIN
 68=68PIN

Contact Plating
 S0=Gold Flash/Tin
 S3=10u"Gold/Tin
 S4=15u"Gold/Tin
 S5=30u"Gold/Tin

Packing
 A=Tray
 T=Tube

Item	Pitch	Mating
Standard	1.27	6310
Alternate		

No. of Pins	Dimension		
	A	B	C
50	41.87	34.57	30.48
68	53.30	46.00	41.91

REV	DATE	MODIFICATION DESCRIPTION	CHANGE	OPERATION	DRAW	DATE	SCALE	FIT	PART NO.
				x.x ±0.40	JYHuang	2012/11/13	UNIT	mm	6311-0XXXDXXPNX01
				x.xx ±0.25	CHECK	DATE	SIZE	A4	
				x.xxx ±0.15			SHEET	1/1	TITLE: 68P FEMALE SCSI D-SUB 180° DIP
				Angle ± 3°	APPROVE	DATE	PROJ.		Customer NO.
				DIM TOL					