

# HSF

## TECHNICAL SPECS:

Current Rating: 3.0AMP  
 Contact Resistance: 10mΩ Max  
 Dielectric Strength: Min 1000V<sub>RMS</sub>  
 Mechanical Life: Min 500 cycles  
 Mating Pin: Ø0.40 to Ø0.66mm or 0.50SQ  
 Forces: (polished steel gauge Ø0.47mm)  
 Insertion: 200g Max/Pin, Withdrawal: 60g/Pin  
 Operation Temperature: -40°C to +105°C

Sleeve: Brass CuZn36Pb3(C36000), Sn over Ni  
 Contact Clip(4 finger): BeCu(C17200), Au or Sn over Ni  
 Insulator Material: PPS+30%G.F(UL94V-0)

## Ordering Information

3522-281 XX S XX 074 X 1

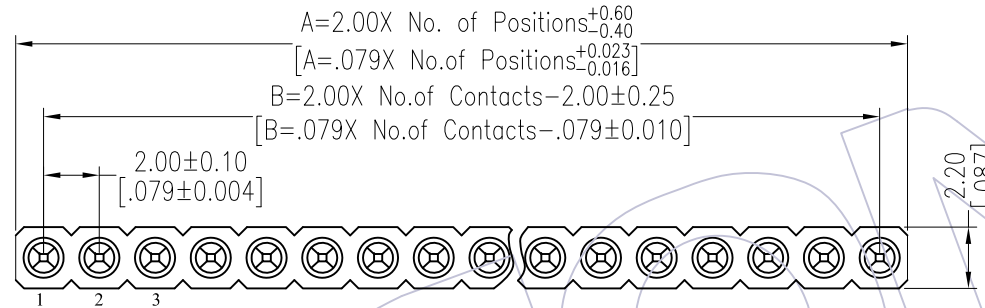
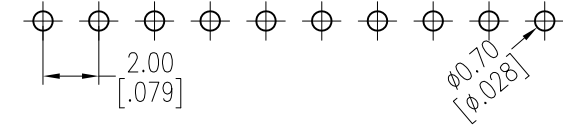
No. of Pin  
2-40PIN

Contact Plating  
 S0=Gold Flash/Tin  
 S3=10u"Gold/Tin  
 S4=15u"Gold/Tin  
 S5=30u"Gold/Tin  
 SN=Tin

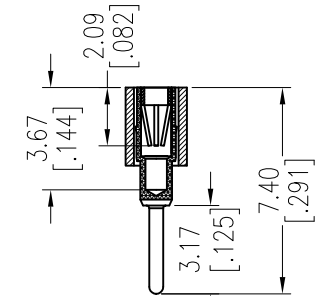
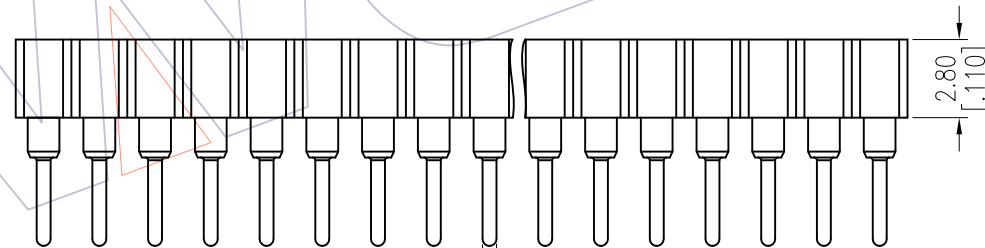
Packing  
 A=Tray  
 T=Tube

Item	Pitch	Mating
Standard	2.00	3512
Alternate		

Recommended P.C.B Layout(Top Side)  
 (PCB BOARD TOLERANCE ±0.05)



NO. of PIN	DIM A
40PIN	2.0*NO. of Positions + 1.00 ± 0.40
<40PIN	2.0*NO. of Positions ± 0.60 ± 0.40



REV	DATE	MODIFICATION DESCRIPTION	CHANGE	OPERATION		DRAW Wang	DATE 2013/05/17	SCALE UNIT	FIT mm	PART NO. 3522-281XXSXX074X1
				X.X	±0.40					
A1	2013/05/17	Modify drawing	-----	X.XX	±0.25	CHECK	DATE	SIZE	A4	TITLE: 2.00mm MACHINED FEMALE HEADER SINGLE ROW 180° H=2.80 L=7.4
A0	2012/10/17	NEW	-----	X.XXX	±0.15	APPROVE	DATE	SHEET	1/1	Customer NO.
				Angle	± 3'			PROJ.	☉	
				DIM	TOL					