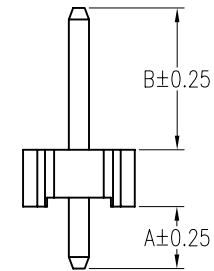
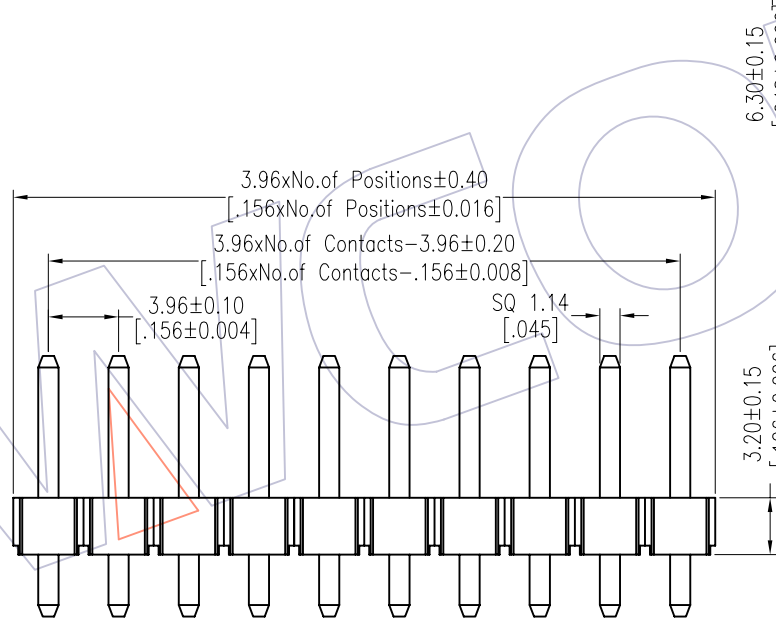
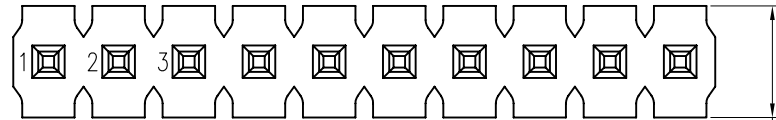
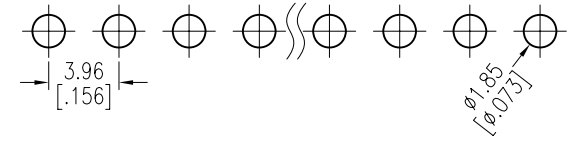


HSF

Recommended P.C.B Layout (Top Side)
(PCB BOARD TOLERANCE±0.05)

NOTES:
 Rated Current:7.0AMP.
 Contact Resistance:20mΩ Max.
 Withstand Voltage:1000V AC/DC
 Insulation Resistance:1000MΩ Min.
 Operation Temperature:-40°C to +105°C

Contact Material:Brass
 Contact Plating:Sn Over Ni
 Insulator Material:LCP+30%G.F UL94V-0 BK



Ordering Information

1832-11 XX XX S XXX X 1

No.of Pins: 02-20
 Contact Plating: SN=Ti
 Pin Length: L=A+B+3.2
 Packing: 0=PE Bag
 Standard:147=14.7

Item	Pin Length	A	B	Mating
Standard	14.70	3.50	8.00	2889
Alternate				

REV	DATE	MODIFICATION DESCRIPTION	CHANGE	OPERATION	DRAW	DATE	SCALE	FIT	PART NO.
				X.X ±0.40	William Chen	2012.06.25	UNIT	mm	1832-11XXXXSXXXX
				X.XX ±0.25	CHECK	DATE	SIZE	A4	TITLE:
				X.XXX ±0.15	APPROVE	DATE	SHEET	1/1	PH3.96 SINGLE ROW 180° H=3.2
				Angle ± 3'			PROJ.	☉	Customer NO.
				DIM TOL					