

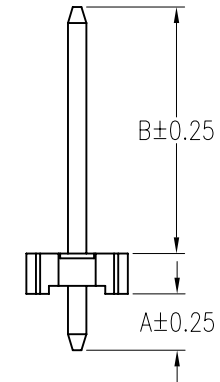
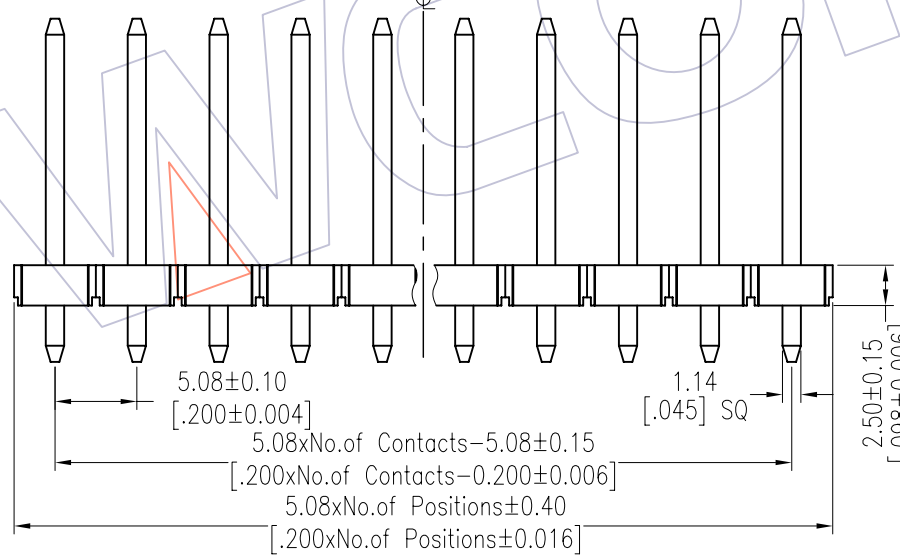
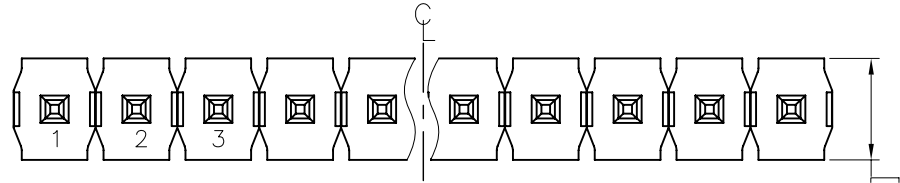
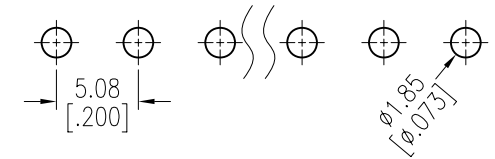
# HSF

**NOTES:**

Rated Current:7.0AMP.  
 Contact Resistance:20mΩ Max.  
 Withstand Voltage:500V AC/DC  
 Insulation Resistance:1000MΩ Min.  
 Operation Temperature:-40°C to +105°C

Contact Material:Brass  
 Contact Plating:Au Or Sn Over Ni  
 Insulator Material:LCP+30%G.F UL94V-0 BK

Recommended P.C.B Layout (Top Side)  
 (PCB BOARD TOLERANCE±0.05)



## Ordering Information

1925-11 XX XX S XXX X 1

No. of Pins: 02-20  
 Contact Plating: G0=Gold Flash, SN=Tin  
 Pin Length: L=A+B+2.5, Standard:140=14.0  
 Packing: 0=PE Bag, T=Tube

Item	Pin Length	A	B	C	Mating
Standard	14.00	3.50	8.00	---	2989
Alternate					

REV	DATE	MODIFICATION DESCRIPTION	CHANGE	OPERATION	DRAW	DATE	SCALE	FIT	PART NO.
				x.x ±0.40	JYHuang	2013.01.08	UNIT	mm	1925-11XXXXXX
A1	2013/01/08	SEE $\Delta$	-----	x.xx ±0.25	CHECK	DATE	SIZE	A4	TITLE:
A0	2012/07/03	NEW	-----	x.xxx ±0.15			SHEET	1/1	PH5.08 SINGLE ROW 180° H=2.5
				Angle ± 3'	APPROVE	DATE	PROJ.	$\phi$	Customer NO.
				DIM TOL					