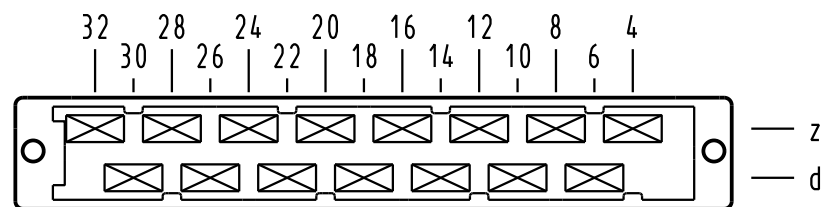


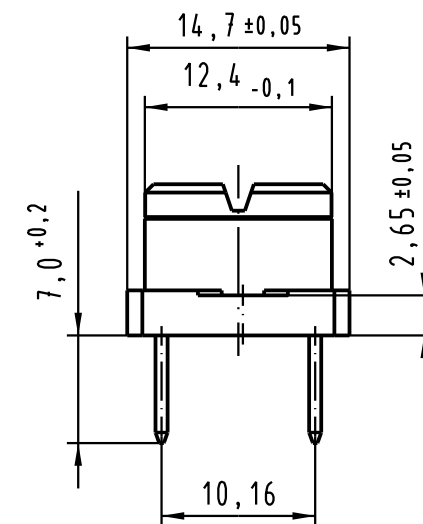
X Kontaktanordnung / contact arrangement



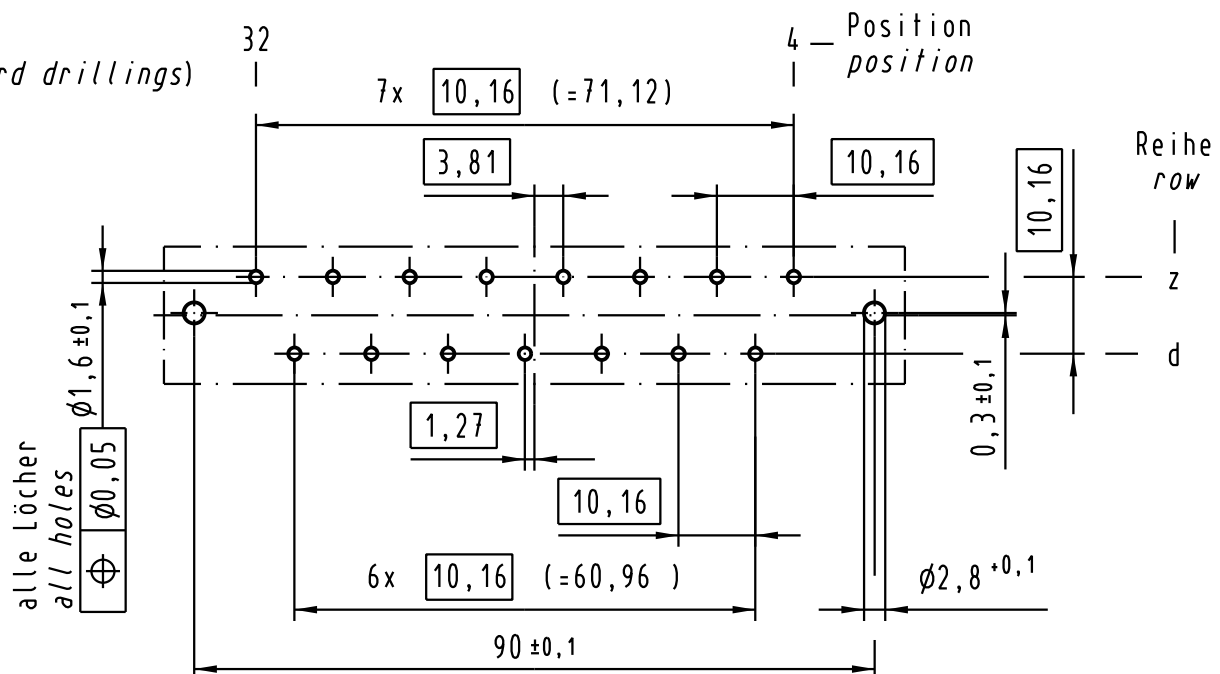
15 Kontakte
15 contacts

- = Kontaktposition belegt
= position with contact
- = Kontaktposition nicht belegt
= position without contact

Z
2:1

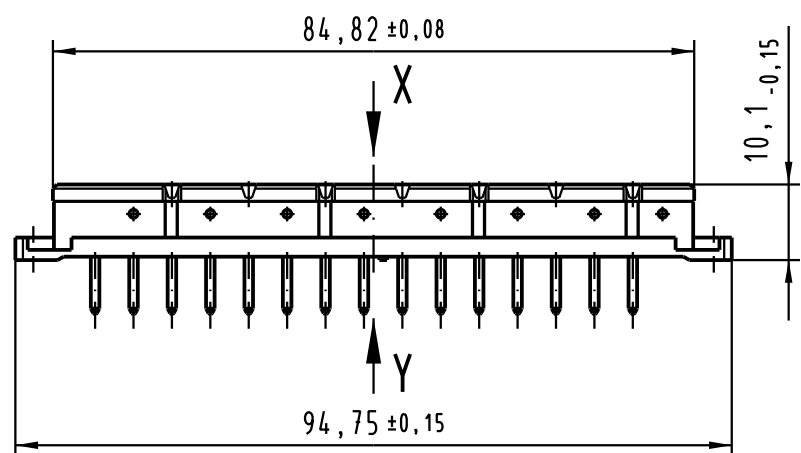


X (Lochbild / board drillings)

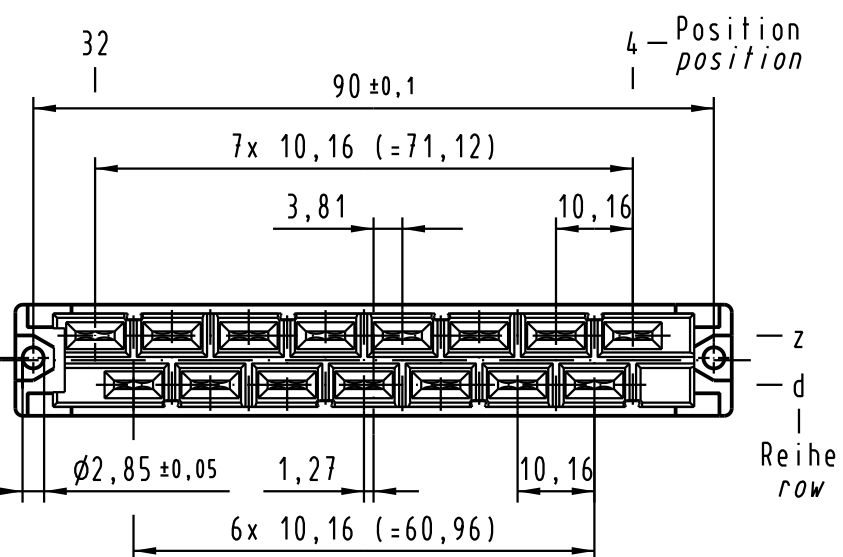
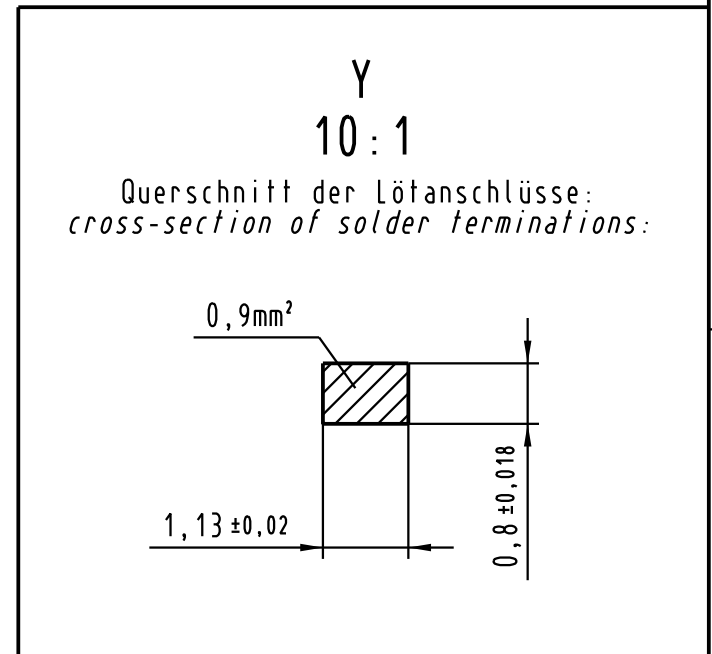
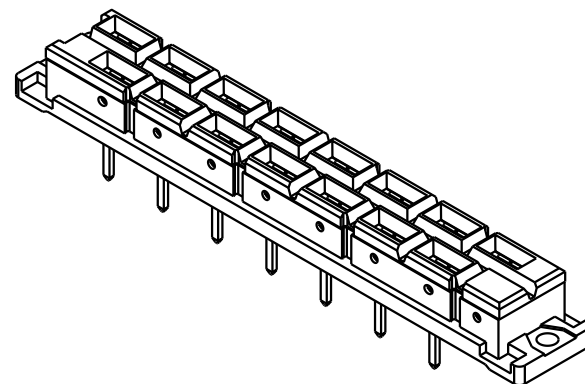


Reihe
row
z
d

alle Löcher
all holes
Ø1,6±0,1
Ø0,05



Z



Reihe
row
z
d

Kontaktoberfläche Ag
contact plating Ag

All Dimensions in mm Original Size DIN A 3		Techn. Character. IEC 60603-2		Nicht tolerierte Maß / Free size tolerances IEC 60603-2	
		Dat.	Name	Maßstab / Scale 1:1 2:1	Bauform / type H 15 low profile Federleiste Einlöt 7,0 female connector solder 7,0
		Detail.	25.05.04 Leh.		
		Insp.	25.05.04 kfoe		
		Stand.			
32581	21.02.05	Leh.	HARTING Electronics GmbH & Co. KG D-32339 ESPELKAMP		TB 09 06 215 2831 Blatt / page
32041					
Mod.	Dat.	Name	Sub.09 06 215 2831 Mod. 5080 v. 29.07.88		