

## MA18 Series

The MA18 series is a 2mm pitch FFC socket connector developed for miniature HDD and main port connection. 44 contacts are provided for AT bus connection.

### ■Ordering Information

**MA18A - 44 D A - 2 DSA**

①                      ②                      ③                      ④                      ⑤                      ⑥

① Series Name : MA18A	⑥ Contact type (Straight type) DSA : Dip length 3mm DSB : Dip length 2.5mm DSC : Dip length 2mm
② Number of contacts : 44	
③ Contact alignment : D : Double row	
④ Contact plating type      A : Selective gold plated	
⑤ Contact pitch : 2mm	

### ■Variation in Number of Contacts

Part Number	CL No.	Remarks	RoHS
MA18A-44DA-2DSA(71)	588-0247-3-71	—	YES
MA18A-44DA-2DSB(71)	588-0255-1-71	—	
MA18A-44DA-2DSC(71)	588-0253-6-71	—	
MA18M-44DA-2DSB(71)	588-0291-5-71	High profile mount type	

## Variation in Connection between HDD and Main Board

### ■Pin Heade

#### (1) Conventional product (used as conventional HDD interface pin header)

##### ●Straight through hole type (see catalog page C15)



44 contacts : A3C-44P-2DSA (see photo)

50 contacts : A3C-50P-2DSA

##### ●Straight SMT type (see catalog page C22)



44 contacts : A3-44PA-2SV(71) (see photo)

50 contacts : A3-50PA-2SV(71)

(With boss type available)

##### ●Right angle through hole type (see catalog page C13)

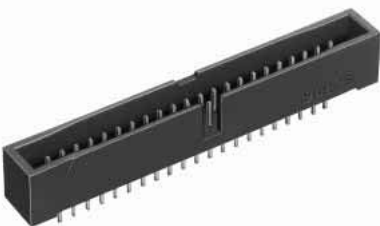


44 contacts : A3B-44PA-2DS(71) (see photo)

50 contacts : A3B-50PA-2DS(71)

#### (2) Box type product (Socket side prevents mis-insertion)

##### ●Straight through hole type(see catalog page C28)



44 contacts : A3E-44PA-2DSA(71) (see photo)

50 contacts : A3E-50PA-2DSA(71)

Note: Correspond to A3E series socket only.

## ■Socket

### (1) Products suitable to various cables

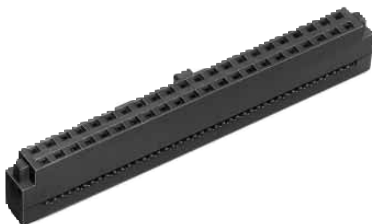
#### ●Discrete wire Crimping Type (see catalog page C19)



44 contacts: A3B-44D-2C

Crimping contacts and crimping tools are detailed on page C20.

#### ●Ribbon Cable (1mm pitch) Batch ID Type (see catalog page C29)



44 contacts: A3E-44D-2R (see photo)

50 contacts: A3E-50D-2R

Insulation displacement is detailed on page C31.

#### ●FPC Connection Type



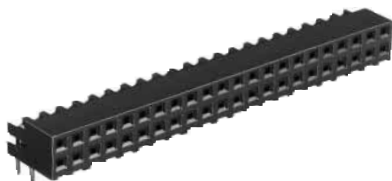
44 contacts: MA18A-44DA-2DSA(71) (photo)

( For a typical example, products are provided corresponding to various board thickness. For details, refer to page C32. )

50 contacts: A3C-50DA-2DSC(71)

( For a typical example, products are provided corresponding to various board thickness. For details, refer to page C17. )

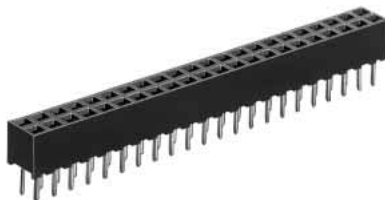
### (2) Right Angle through hole Type (see catalog page C16.)



44 contacts: A3-44DA-2DS(71) (see photo)

50 contacts: A3-50DA-2DS(71)

### (3) Straight through hole Type



44 contacts: MA18A-44DA-2DSA(71) (see photo)  
 (See catalog page C32.)

50 contacts: A3C-50DA-2DSA(71) (see catalog page C17.)