

## NOTES:

- ① THIS CONNECTOR IS DESIGNED TO MEET THE APPLICABLE PERFORMANCE REQUIREMENTS OF IEC 61076-4-101 AND BELLCORE GR-1217-CORE
- 2 RoHS DIRECTIVE COMPLIANCE, MAX SOLDERING TEMPERATURE 225°C.
- 3 CONNECTORS ARE END STACKABLE ON A 2.0 GRID.
- 4 FOR COMPLIANT CONTACT PLATED THRU HOLE REQUIREMENTS SEE THRU HOLE PLATING VIEW.
- MINIMUM P.C.BOARD THICKNESS 1.57 NOMINAL.
- 5 OPTIONAL BOTTOM SHIELD SOLD SEPARATELY
- ⑥ NO GAP PERMISSIBLE TO PC BOARD.

## SPECIFICATIONS

## MATERIALS

- ① Insulators:  
Thermoplastic Polyester, glass filled  
Rated UL 94V-0, Color: Gray
- ② Pin contacts:  
Copper Alloy  
Finish: Mating Zone=Gold  
Compliant Zone=Matte Tin  
Performance Class 2= 250 cycles
- ③ Top Shield:  
Copper Alloy  
Finish: Nickel Plate

## PERFORMANCE CHARACTERISTICS ①

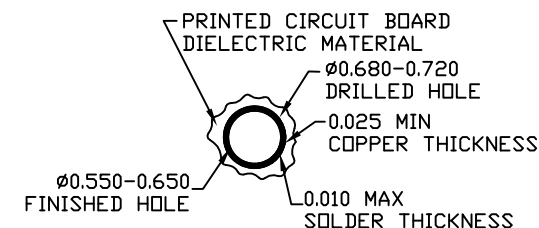
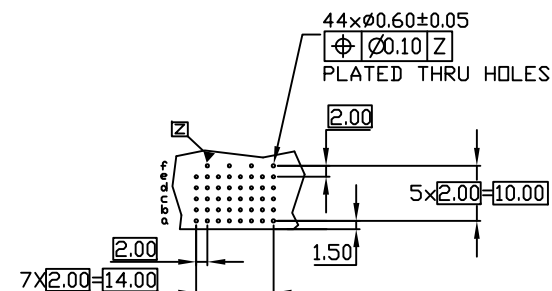
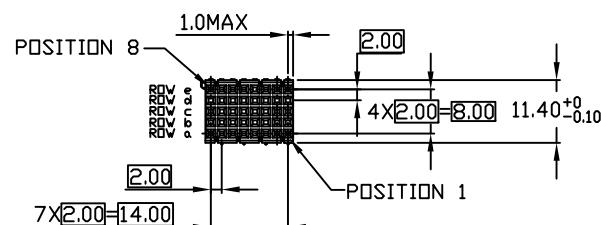
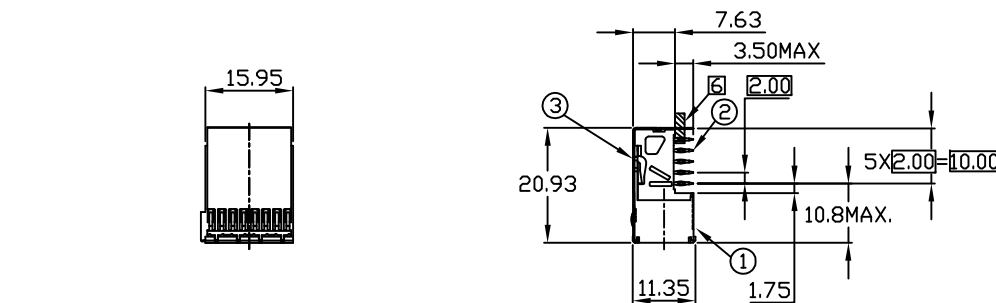
Insulation resistance: 10,000 megohms minimum

Dielectric withstanding voltage(at sea level): 750 Vrms

Current rating: 1 amp @70°C, fully loaded  
1.5 amp @20°C, fully loaded

Operating temperature range: -55°C to +125°C

Contact resistance: 20 milliohms maximum

RECOMMENDED PC BOARD REQUIREMENTS  
(COMPONENT SIDE BOARD SHOWN)THRU HOLE PLATING  
SCALE 10:1

| C    | ECN-130093        | 6/13'13  | Seawen |
|------|-------------------|----------|--------|
| B    | ECR-NC0265,NC0266 | 11/30'11 | Seawen |
| A    | RELEASE           | 5/10'10  | Seawen |
| REV. | DESCRIPTION       | DATE     | APPD   |

| UNITS<br><input checked="" type="checkbox"/> mm <input type="checkbox"/> INCH |  | NAME:<br>Enriched Hard-Metric<br>Female B8 type ASSY |  | NEXTRON <sup>®</sup><br>NEXTRONICS ENGINEERING CORP. |  |
|---|--|--|--|--|--|
| GENERAL TOLERANCES:<br>(UNLESS SPECIFIED)                                     |  | PART NO:<br>R-814F011A10050                          |  | TITLE:<br>CUSTOMER DWG.                              |  |
|   |  | APPD: 楊海文 6/13'13                                    |  | DWG NO:<br>010-0000-684-814F011A10050                |  |
|   |  | CHKD: 廖小瓊 6/13'13                                    |  | SCALE: SHEET: REV.:<br>1/1 5/5 C                     |  |
|   |  | DRAWN: 何潔賢 6/13'13                                   |  |  |  |
| ANGULAR: X°±** X°±**  |  |  |  |  |  |