

NOTE:

1. MATERIAL AND FINISH

1.1. SHELL ASSEMBLY: COPPER ALLOY, OUTER SHELL AND COLLET

NUT Cr PLATING, OTHER METALLIC COMPONENTS Ni PLATING

1.2. INSULATOR: PEEK

1.3. CONTACT: COPPER ALLOY, GOLD PLATING

2. RoHS COMPLIANCE

CRIMP CONTACT DETAILS SHOWN IN VIEW 1

4. PART NO.

R - F O B S * * 0 * D 2 * * *

CONTACT POS.
02-09=2pin-09pin

SHELL MATERIAL
0=Brass

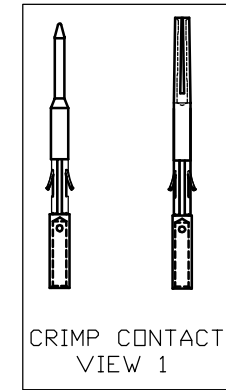
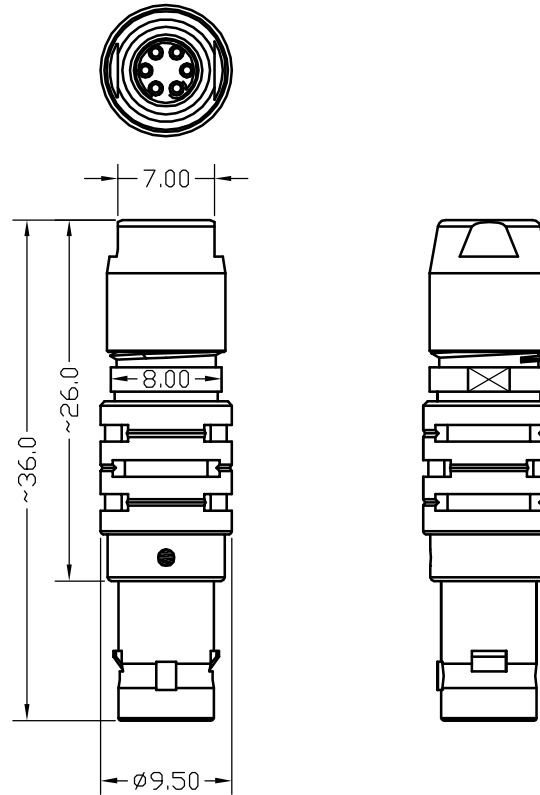
CODE	CONTACT TYPE
2	Male Solder Contact
4	Female Solder Contact
<input checked="" type="checkbox"/> C	Crimp Male Contact
<input checked="" type="checkbox"/> M	Crimp Female Contact
1	Male Print Contact
3	Female Print Contact

CABLE OD	
21=OD:	1.4mm-2.2mm
31=OD:	2.2mm-3.2mm
42=OD:	3.2mm-4.2mm
52=OD:	4.1mm-5.0mm
56=OD:	5.2mm-5.6mm

CODE	KEY ANGLES
0	0
A	30°
B	60°
..	..

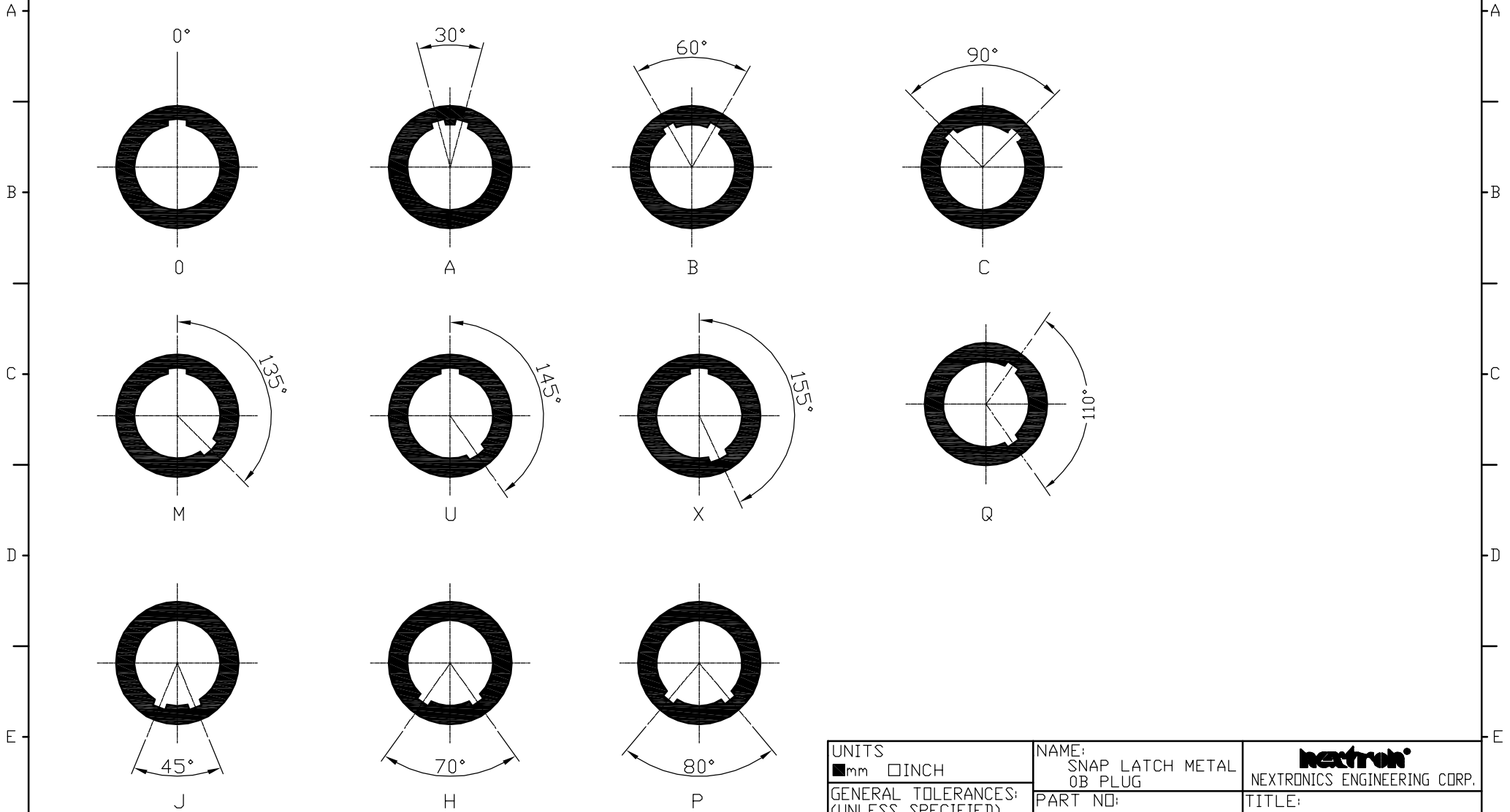
COLLET NUT
2=Nut for Standard

REV.	DESCRIPTION	DATE	APPD
A	ECN-150053	5/13'15	Seawen



UNITS <input checked="" type="checkbox"/> mm <input type="checkbox"/> INCH		NAME: SNAP LATCH METAL OB PLUG	nextron NEXTRONICS ENGINEERING CORP.	
GENERAL TOLERANCES: (UNLESS SPECIFIED)		PART NO: R-FOBS**0*D2***	TITLE: CUSTOMER DWG.	
	mm	INCH	APPD: Seawen 5/13'15	DWG NO: 010-0000-B20
4 PLACE	± **	± **	CHKD: Peter 5/13'15	C
3 PLACE	± 0.10	± **	DRAWN: Alex 5/13'15	SCALE: SHEET: REV.: 2.5/1 2/3 A
2 PLACE	± 0.30	± **		
1 PLACE	± 0.50	± **		
ANGULAR:	X° ± 2°	X° ± **		

KEY ANGLES (RECEPTACLE FRONT VIEW):



UNITS ■mm □INCH		NAME: SNAP LATCH METAL OB PLUG		NEXTRONICS ENGINEERING CORP.	
GENERAL TOLERANCES: (UNLESS SPECIFIED)		PART NO: R-F0BS**0*****			
	mm	INCH	APPD: Seawen 5/13'15		DWG NO: 010-0000-B20
4 PLACE	± **	± **	CHKD: Peter 5/13'15		SCALE: SHEET: REV.: 2.5/1 3/3 A
3 PLACE	± 0.10	± **	DRAWN: Alex 5/13'15		
2 PLACE	± 0.30	± **			
1 PLACE	± 0.50	± **			
ANGULAR:	X° ± 2°	X° ± **			

A	ECN-150053	5/13'15	Seawen
REV.	DESCRIPTION	DATE	APPD