

NOTE:

1. MATERIAL AND FINISH
SHELL ASSEMBLY: COPPER ALLOY, OUTER SHELL AND COLLECT NUT Cr PLATING, OTHER METALLIC COMPONENTS Ni PLATING
INSULATOR: PEEK
CONTACT: COPPER ALLOY, GOLD PLATING OVER Ni
2. DURABILITY: 5000 CYCLES
3. PROTECTION INDEX(MATED): IP66/IP68, IP68 ACHIEVED PROVIDING THAT THE CABLE IS PERFECTLY CIRCULAR AND THAT ASSEMBLY PROCESS ENSURES A HIGH INTEGRITY SEAL.
4. HUMIDITY: UP TO 95% AT 60°C
5. TEMPERATURE: -55°C,+200°C
6. ROHS COMPLIANCE
7. PART NO.

R - F 0 K F * * 0 * C 1 0 * *

CONTACT POS.	02-09=2pin-09pin
--------------	------------------

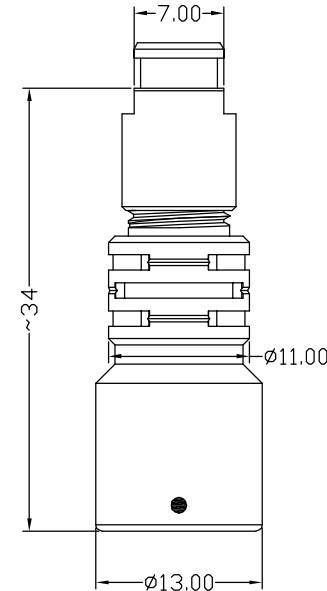
SHELL MATERIAL	0=Brass
----------------	---------

CODE	CONTACT TYPE
2	Male Solder Contact
4	Female Solder Contact
C	Crimp Male Contact
M	Crimp Female Contact

COLLET NUT	1=Nut for fitting a bend relief
------------	---------------------------------

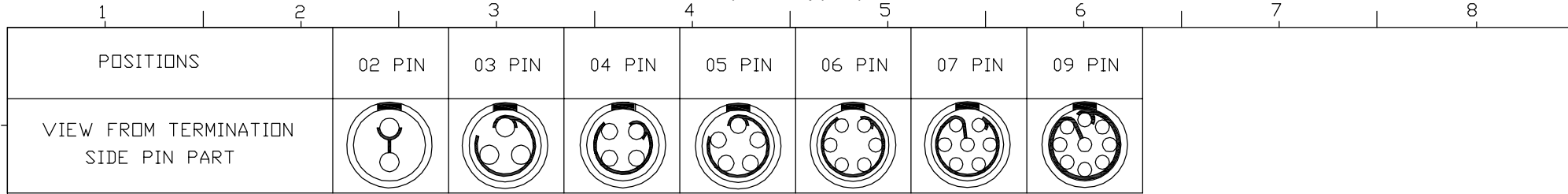
CABLE OD	
10=OD:	1.0mm-1.2mm
15=OD:	1.3mm-1.5mm
20=OD:	1.6mm-2.0mm
25=OD:	2.1mm-2.5mm
30=OD:	2.6mm-3.0mm
35=OD:	3.1mm-3.5mm
40=OD:	3.6mm-4.0mm
45=OD:	4.1mm-4.5mm
50=OD:	4.6mm-5.0mm

CODE	KEY ANGLES
0	0
A	30°
"	"



UNITS ■mm □INCH	NAME: SNAP LATCH METAL OK FLOATING SOCKET	nexttron NEXTRONICS ENGINEERING CORP.	
GENERAL TOLERANCES: (UNLESS SPECIFIED)	PART NO: R-F0KF**0*C1***	TITLE: CUSTOMER DWG.	
4 PLACE ±** ±**	APPD: Seawen 6/29/15	DWG NO: 010-0000-C11	C
3 PLACE ±0.10 ±**	CHKD: Peter 6/29/15	SCALE: 5/1	SHEET: 1/3
2 PLACE ±0.30 ±**	DRAWN: Alex 6/29/15	REV.: X1	
1 PLACE ±0.50 ±**			
ANGULAR: X°±2° X°±**			

X1	NEW RELEASE	6/29/15	Seawen
REV.	DESCRIPTION	DATE	APPD



NOTE:

1. MATERIAL AND FINISH
SHELL ASSEMBLY: COPPER ALLOY, OUTER SHELL AND COLLECT NUT Cr PLATING, OTHER METALLIC COMPONENTS Ni PLATING
INSULATOR: PEEK
CONTACT: COPPER ALLOY, GOLD PLATING OVER Ni
2. DURABILITY: 5000 CYCLES
3. PROTECTION INDEX(MATED): IP66/IP68, IP68 ACHIEVED PROVIDING THAT THE CABLE IS PERFECTLY CIRCULAR AND THAT ASSEMBLY PROCESS ENSURES A HIGH INTEGRITY SEAL.
4. HUMIDITY: UP TO 95% AT 60°C
5. TEMPERATURE: -55°C,+200°C
6. ROHS COMPLIANCE
7. PART NO.

R - F 0 K F * * 0 * C 2 0 * *

CONTACT POS.	02-09=2pin-09pin
--------------	------------------

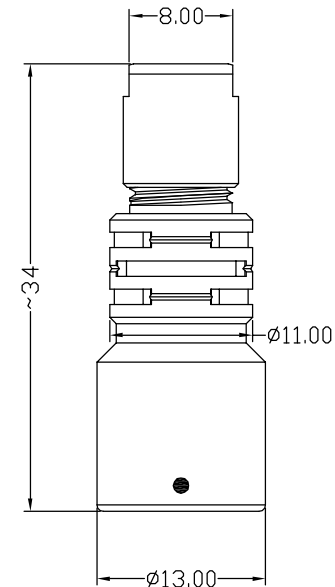
SHELL MATERIAL	0=Brass
----------------	---------

CODE	CONTACT TYPE
2	Male Solder Contact
4	Female Solder Contact
C	Crimp Male Contact
M	Crimp Female Contact

COLLET NUT	2=Nut for Standard
------------	--------------------

CABLE OD
10=OD: 1.0mm-1.2mm
15=OD: 1.3mm-1.5mm
20=OD: 1.6mm-2.0mm
25=OD: 2.1mm-2.5mm
30=OD: 2.6mm-3.0mm
35=OD: 3.1mm-3.5mm
40=OD: 3.6mm-4.0mm
45=OD: 4.1mm-4.5mm
50=OD: 4.6mm-5.0mm

CODE	KEY ANGLES
0	0
A	30°
..	..

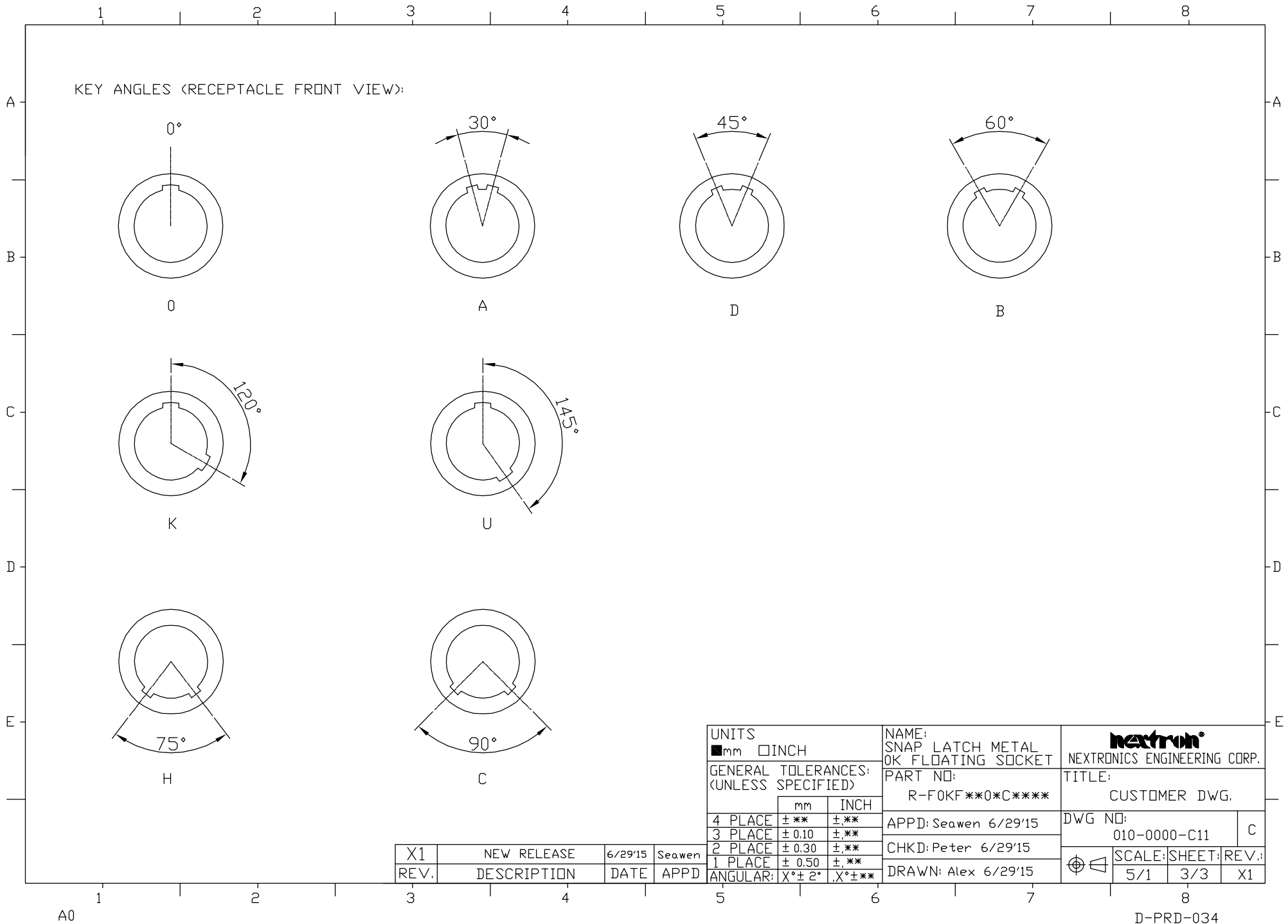


UNITS	
mm	INCH
GENERAL TOLERANCES: (UNLESS SPECIFIED)	
	mm INCH
4 PLACE	±** ±**
3 PLACE	±0.10 ±.**
2 PLACE	±0.30 ±.**
1 PLACE	±0.50 ±.**
ANGULAR:	X°±2° X°±**

NAME:	SNAP LATCH METAL OK FLOATING SOCKET
PART NO:	R-F0KF**0*C2***
APPD:	Seawen 6/29'15
CHKD:	Peter 6/29'15
DRAWN:	Alex 6/29'15

nexttron NEXTRONICS ENGINEERING CORP.	
TITLE: CUSTOMER DWG.	
DWG NO:	010-0000-C11
SCALE:	5/1
SHEET:	2/3
REV.:	X1

X1	NEW RELEASE	6/29'15	Seawen
REV.	DESCRIPTION	DATE	APPD



UNITS <input checked="" type="checkbox"/> mm <input type="checkbox"/> INCH		NAME: SNAP LATCH METAL OK FLOATING SOCKET		NEXTRONICS ENGINEERING CORP.	
GENERAL TOLERANCES: (UNLESS SPECIFIED)		PART NO: R-F0KF**0*C****		TITLE: CUSTOMER DWG.	
	mm	INCH	APPD: Seawen 6/29'15		DWG NO: 010-0000-C11
4 PLACE	±**	±**	CHKD: Peter 6/29'15		C
3 PLACE	±0.10	±**	DRAWN: Alex 6/29'15		SCALE: SHEET: REV.:
2 PLACE	±0.30	±**			5/1 3/3 X1
1 PLACE	±0.50	±**			
ANGULAR:	X°±2°	X°±**			

X1	NEW RELEASE	6/29'15	Seawen
REV.	DESCRIPTION	DATE	APPD

D-PRD-034