

NOTE:

1. MATERIAL AND FINISH

1.1. SHELL ASSEMBLY: COPPER ALLOY, OUTER SHELL AND COLLET NUT Cr PLATING, OTHER METALLIC COMPONENTS Ni PLATING

1.2. INSULATOR: PEEK

1.3. CONTACT: COPPER ALLOY, GOLD PLATING

2. RoHS COMPLIANCE

3. PART NO.

R - F 1 B F * * 0 * D 1 * * *

CONTACT POS.
02-16=2pin-16pin

SHELL MATERIAL
0=Brass

CODE	CONTACT TYPE
2	Male Solder Contact
4	Female Solder Contact
C	Crimp Male Contact
M	Crimp Female Contact

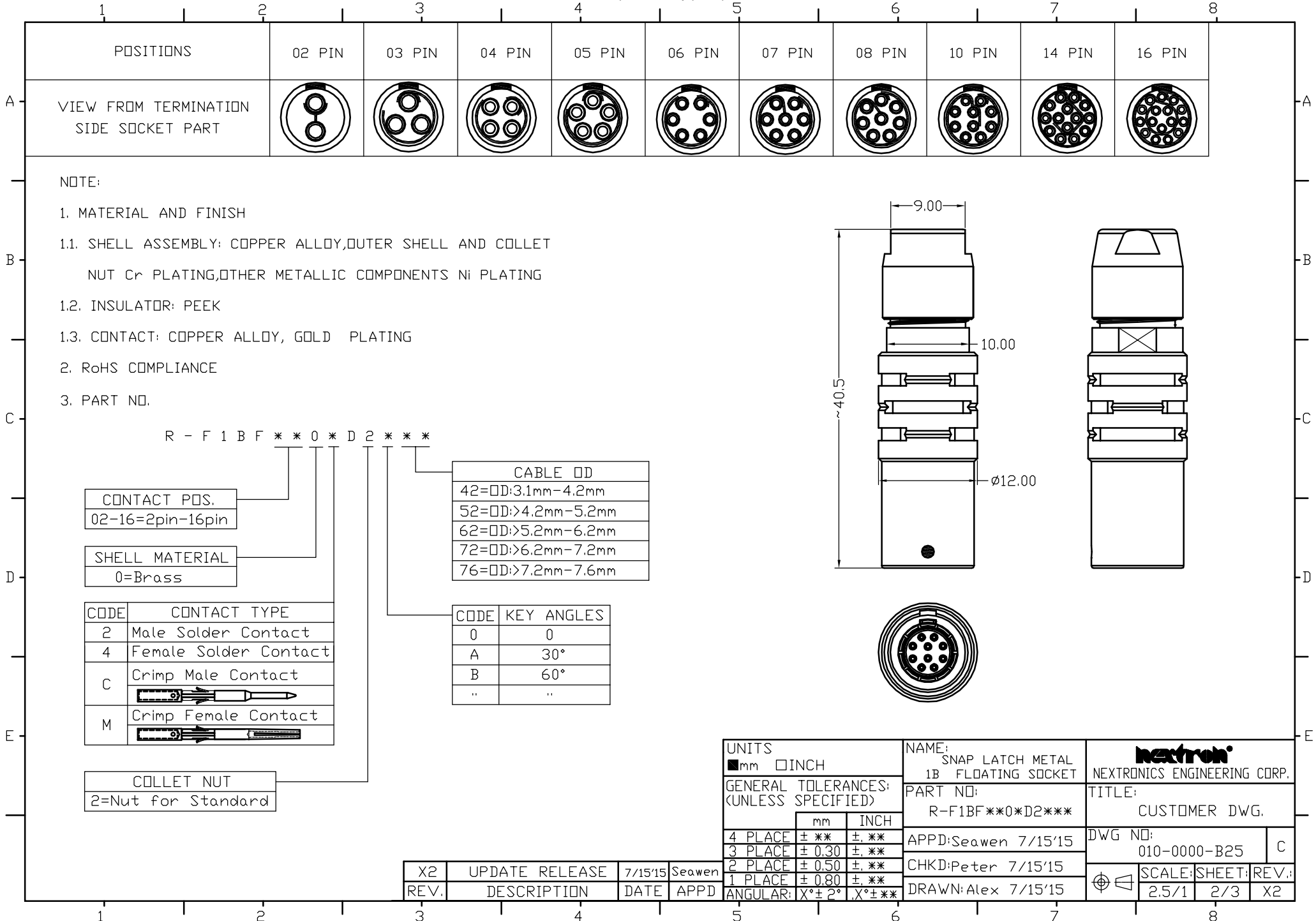
COLLET NUT
1=Nut for fitting a bend relief

CABLE OD
42=OD:3.1mm-4.2mm
52=OD:>4.2mm-5.2mm
62=OD:>5.2mm-6.2mm
72=OD:>6.2mm-7.2mm
76=OD:>7.2mm-7.6mm

CODE	KEY ANGLES
0	0
A	30°
B	60°
"	"

UNITS ■mm □INCH		NAME: SNAP LATCH METAL 1B FLOATING SOCKET		NEXTRON® NEXTRONICS ENGINEERING CORP.	
GENERAL TOLERANCES: (UNLESS SPECIFIED)		PART NO: R-F1BF**0*D1***		TITLE: CUSTOMER DWG.	
	mm	INCH	APPD:Seawen 7/15'15	DWG NO: 010-0000-B25	
4 PLACE	± **	± **	CHKD:Peter 7/15'15	C	
3 PLACE	± 0.30	± **	DRAWN: Alex 7/15'15	SCALE: SHEET: REV.:	
2 PLACE	± 0.50	± **		2.5/1	1/3
1 PLACE	± 0.80	± **			X2
ANGULAR:	X°± 2°	X°± **			

REV.	DESCRIPTION	DATE	APPD
X2	UPDATE RELEASE	7/15'15	Seawen



NOTE:

1. MATERIAL AND FINISH

1.1. SHELL ASSEMBLY: COPPER ALLOY, OUTER SHELL AND COLLET NUT Cr PLATING, OTHER METALLIC COMPONENTS Ni PLATING

1.2. INSULATOR: PEEK

1.3. CONTACT: COPPER ALLOY, GOLD PLATING

2. RoHS COMPLIANCE

3. PART NO.

R - F 1 B F * * 0 * D 2 * * *

CONTACT POS.
02-16=2pin-16pin

SHELL MATERIAL
0=Brass

CODE	CONTACT TYPE
2	Male Solder Contact
4	Female Solder Contact
C	Crimp Male Contact
M	Crimp Female Contact

COLLET NUT
2=Nut for Standard

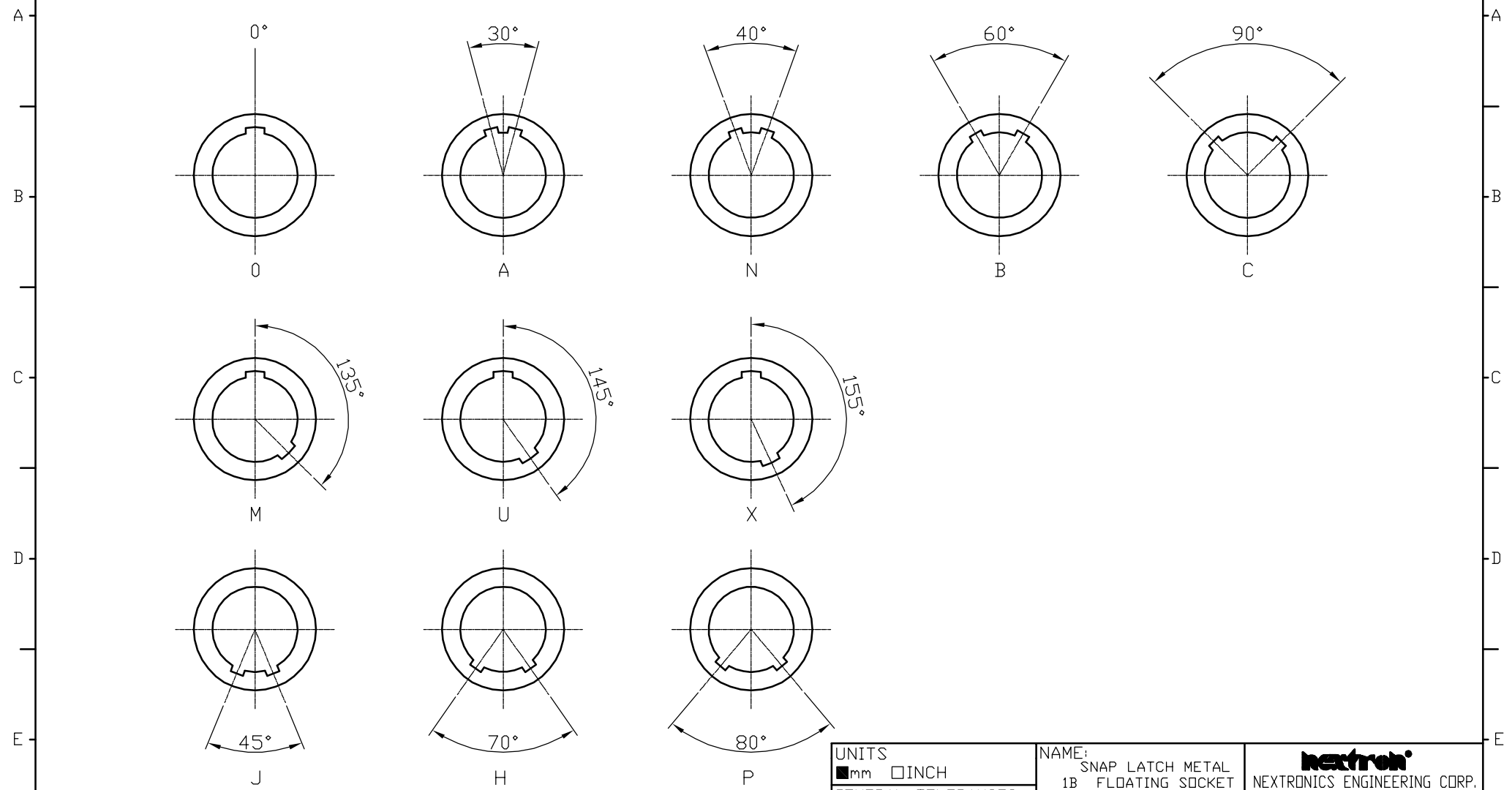
CABLE OD
42=OD:3.1mm-4.2mm
52=OD:>4.2mm-5.2mm
62=OD:>5.2mm-6.2mm
72=OD:>6.2mm-7.2mm
76=OD:>7.2mm-7.6mm

CODE	KEY ANGLES
0	0°
A	30°
B	60°
"	"

UNITS		NAME:		NEXTRON [®]	
■mm	□INCH	SNAP LATCH METAL 1B FLOATING SOCKET		NEXTRONICS ENGINEERING CORP.	
GENERAL TOLERANCES: (UNLESS SPECIFIED)		PART NO: R-F1BF**0*D2***		TITLE: CUSTOMER DWG.	
	mm	INCH	APPD:Seawen 7/15'15	DWG NO: 010-0000-B25	
4 PLACE	± **	± **	CHKD:Peter 7/15'15	C	
3 PLACE	± 0.30	± **	DRAWN:Alex 7/15'15	SCALE: SHEET: REV.:	
2 PLACE	± 0.50	± **		2.5/1	2/3
1 PLACE	± 0.80	± **			X2
ANGULAR:	X°± 2°	X°± **			

REV.	DESCRIPTION	DATE	APPD
X2	UPDATE RELEASE	7/15'15	Seawen

KEY ANGLES (RECEPTACLE FRONT VIEW):



UNITS	
<input checked="" type="checkbox"/> mm	<input type="checkbox"/> INCH
GENERAL TOLERANCES: (UNLESS SPECIFIED)	
	mm INCH
4 PLACE	± **. ± .**
3 PLACE	± 0.10 ± .**
2 PLACE	± 0.30 ± .**
1 PLACE	± 0.50 ± .**
ANGULAR:	X° ± 2° .X° ± **

NAME:	SNAP LATCH METAL 1B FLOATING SOCKET
PART NO:	R-F1BF**0*D****
APPD:	Seawen 7/15'15
CHKD:	Peter 7/15'15
DRAWN:	Alex 7/15'15

 NEXTRONICS ENGINEERING CORP.		
TITLE: CUSTOMER DWG.		
DWG NO:	010-0000-B25	C
SCALE:	SHEET:	REV.:
2.5/1	3/3	X2

X2	UPDATE RELEASE	7/15'15	Seawen
REV.	DESCRIPTION	DATE	APPD