

A VIEW FROM TERMINATION SIDE SOCKET PART

NOTE:

1. MATERIAL AND FINISH

1.1. SHELL ASSEMBLY: COPPER ALLOY, OUTER SHELL AND COLLET

NUT Cr PLATING, OTHER METALLIC COMPONENTS Ni PLATING

1.2. INSULATOR: PEEK

1.3. CONTACT: COPPER ALLOY, GOLD PLATING

2. RoHS COMPLIANCE

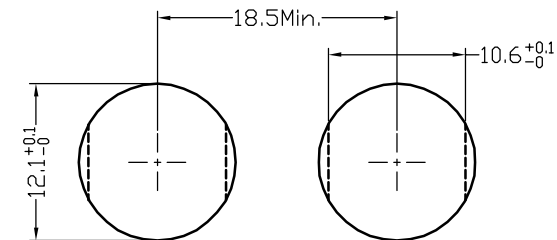
3. PART NO.

No. OF CONTACTS	∅C	L
02,03,.....07,08	0.7	3.0
10,14,16	0.5	4.0

R - F 1 B N \* \* 0 \* 0 0 \* 0 0

CONTACT POS.	02-16=2pin-16pin
SHELL MATERIAL	0=Brass

CODE	KEY ANGLES
0	0
A	30°
B	60°
"	"

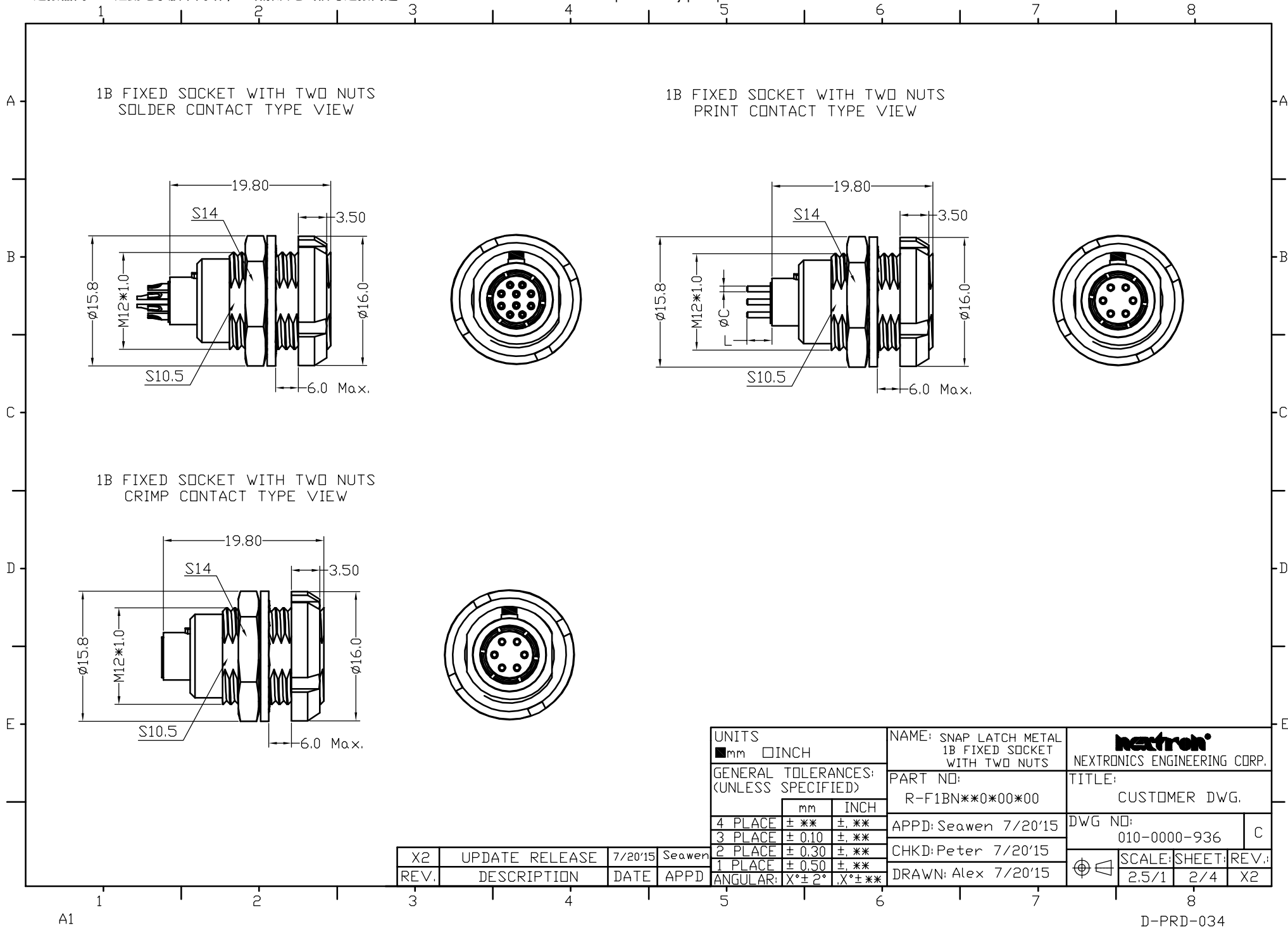


PANEL CUT-OUT

CODE	CONTACT TYPE
2	Male Solder Contact
4	Female Solder Contact
1	Male Print Contact
3	Female Print Contact
M	Crimp Female Contact
C	Crimp Male Contact

UNITS ■mm □INCH	NAME: SNAP LATCH METAL 1B FIXED SOCKET WITH TWO NUTS	<b>nexttron</b> NEXTRONICS ENGINEERING CORP.
GENERAL TOLERANCES: (UNLESS SPECIFIED)	PART NO: R-F1BN**0*00*00	TITLE: CUSTOMER DWG.
	APPD: Seawen 7/20'15	DWG NO: 010-0000-936
	CHKD: Peter 7/20'15	SCALE: SHEET: REV.: 2.5/1 1/4 X2
	DRAWN: Alex 7/20'15	

X2	UPDATE RELEASE	7/20'15	Seawen
REV.	DESCRIPTION	DATE	APPD



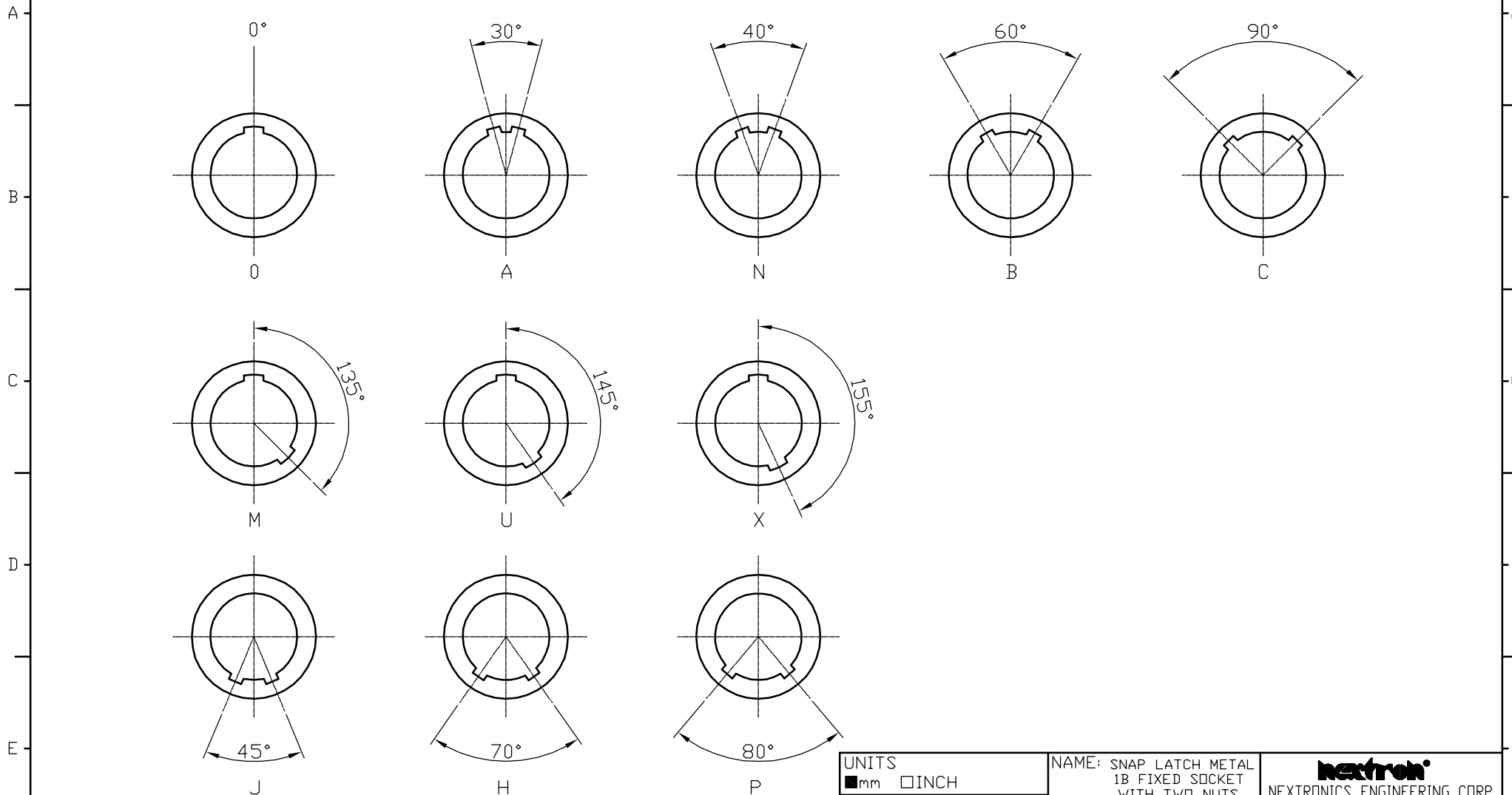
X2	UPDATE RELEASE	7/20'15	Seawen
REV.	DESCRIPTION	DATE	APPD


UNITS <input checked="" type="checkbox"/> mm <input type="checkbox"/> INCH		NAME: SNAP LATCH METAL 1B FIXED SOCKET WITH TWO NUTS		 NEXTRONICS ENGINEERING CORP.	
GENERAL TOLERANCES: (UNLESS SPECIFIED)		PART NO: R-F1BN**0*00*00		TITLE: CUSTOMER DWG.	
	mm	INCH	APPD: Seawen 7/20'15		DWG NO: 010-0000-936
4 PLACE	± **.05	± **.002	CHKD: Peter 7/20'15		C
3 PLACE	± 0.10	± **.004	DRAWN: Alex 7/20'15		
2 PLACE	± 0.30	± **.016			
1 PLACE	± 0.50	± **.020			
ANGULAR: X° ± 2°		X° ± **.004		SCALE: SHEET: REV.: 2.5/1 2/4 X2	

A1

D-PRD-034

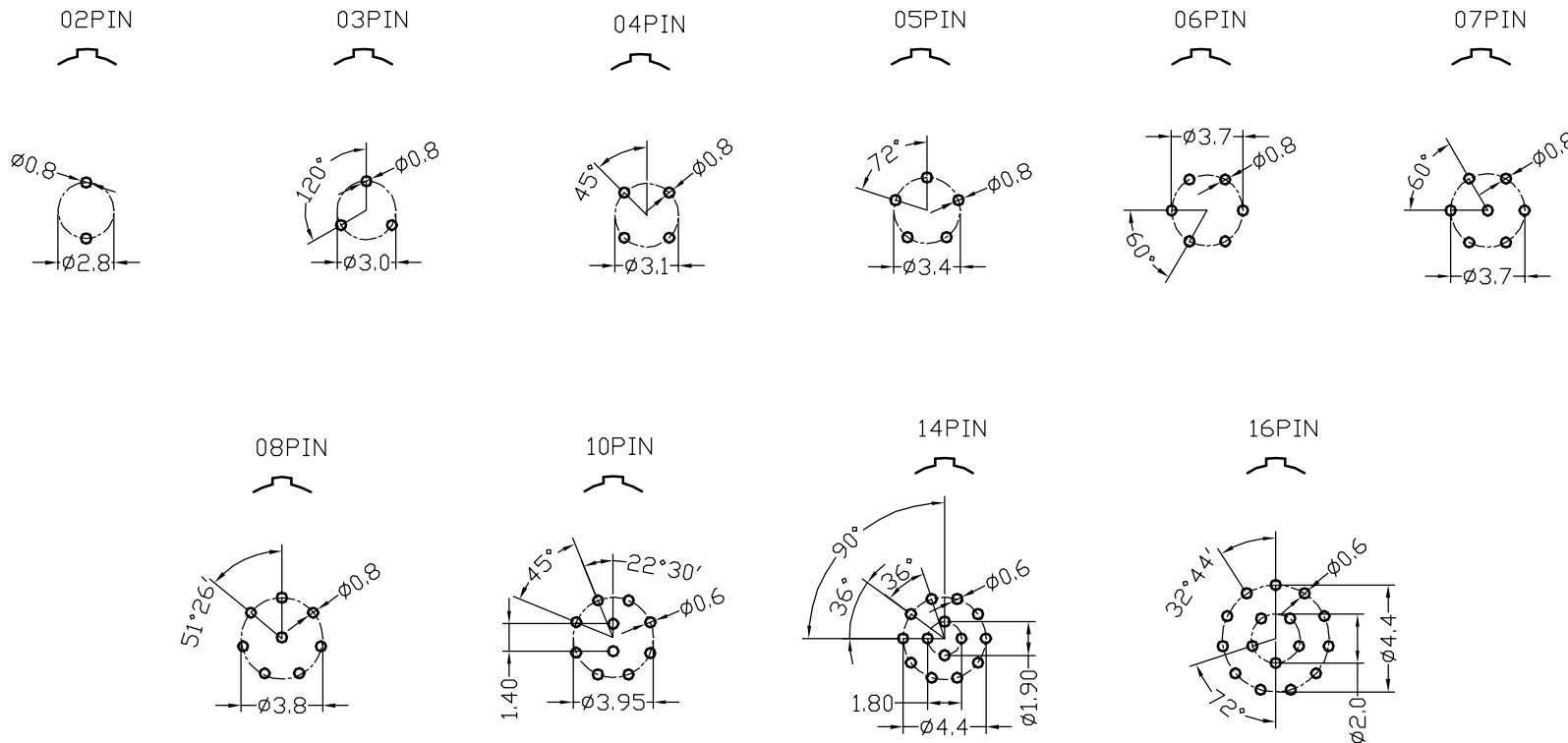
KEY ANGLES (RECEPTACLE FRONT VIEW):



UNITS <input checked="" type="checkbox"/> mm <input type="checkbox"/> INCH		NAME: SNAP LATCH METAL 1B FIXED SOCKET WITH TWO NUTS		 NEXTRONICS ENGINEERING CORP.	
GENERAL TOLERANCES: (UNLESS SPECIFIED)		PART NO: R-F1BN**0*00*00			
	mm	INCH	APPD: Seawen 7/20'15		DWG NO: 010-0000-936
4 PLACE	± **	± **	CHKD: Peter 7/20'15		SCALE: SHEET: REV.: 2.5/1 3/4 X2
3 PLACE	± 0.10	± **	DRAWN: Alex 7/20'15		
2 PLACE	± 0.30	± **			
1 PLACE	± 0.50	± **			
ANGULAR:	X° ± 2°	X° ± **			

X2	UPDATE RELEASE	7/20'15	Seawen
REV.	DESCRIPTION	DATE	APPD

PCB DRILLING PATTERN:



UNITS <input checked="" type="checkbox"/> mm <input type="checkbox"/> INCH		NAME: SNAP LATCH METAL 1B FIXED SOCKET WITH TWO NUTS		NEXTRONICS ENGINEERING CORP. TITLE: CUSTOMER DWG.	
GENERAL TOLERANCES: (UNLESS SPECIFIED)		PART NO: R-F1BN**0*00*00			
		mm	INCH	APPD: Seawen 7/20'15	
4 PLACE	$\pm **$	$\pm **$		CHKD: Peter 7/20'15	
3 PLACE	$\pm 0.10$	$\pm **$		DRAWN: Alex 7/20'15	
2 PLACE	$\pm 0.30$	$\pm **$			
1 PLACE	$\pm 0.50$	$\pm **$			
ANGULAR:	$X^\circ \pm 2^\circ$	$X^\circ \pm **$			
REV.	DESCRIPTION	DATE	APPD	SCALE: 2.5/1	SHEET: 4/4
X2	UPDATE RELEASE	7/20'15	Seawen		REV.: X2

A1

D-PRD-034